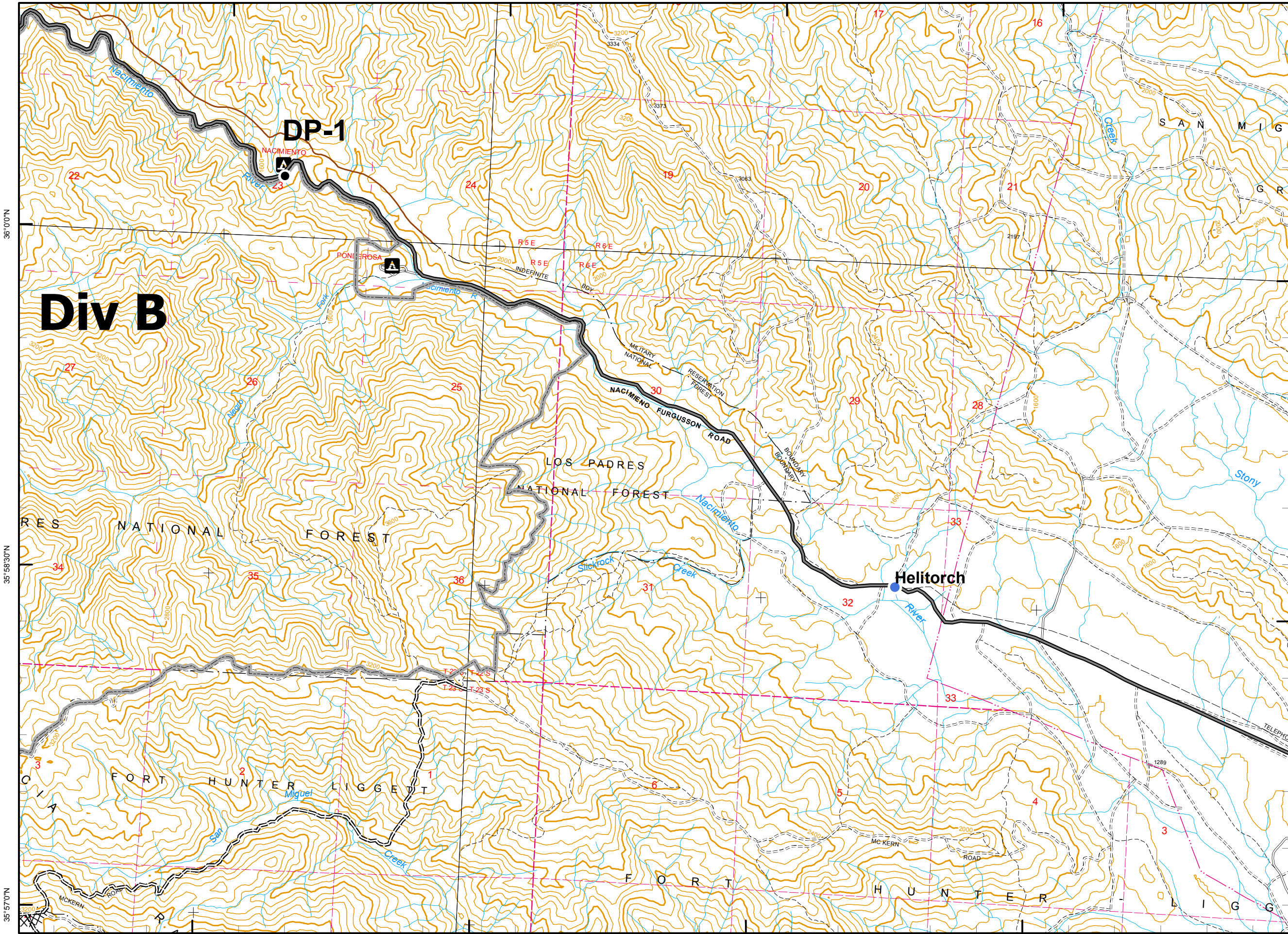


121°24'0"W

121°22'30"W

121°21'0"W

121°19'30"W



36°0'0"N

35°58'30"N

35°57'0"N

N.0.0.36

35°58'30"N

121°24'0"W

121°22'30"W

121°21'0"W

121°19'30"W

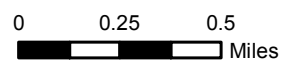
# Chalk Fire

CA-LPF-002754  
September 30, 2008  
Day Operational Period  
0600 to 1800



## Legend

- Incident Command Post
- Camp
- Staging Area
- Water Source
- Helibase
- Mobil Weather Unit
- Repeater
- Drop Point
- Helispot
- Safety Zone
- Retardant Pickup
- Road Hazard
- Division
- Branch
- Completed Dozer Line
- Proposed Dozer Line
- Planned Fire Line
- Uncontrolled Fire Edge
- Completed Line
- Hand Line
- Roads
- Trails
- Wilderness



Contour Interval 20 feet  
Scale: 1:30,000



# 302

Mark T. Smith, GISS, 09/30/08, 2230