

121°31'30"W

121°30'0"W

121°28'30"W

121°27'0"W





121°25'30"W

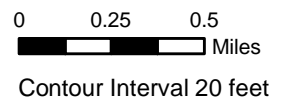
# Chalk Fire

CA-LPF-002754

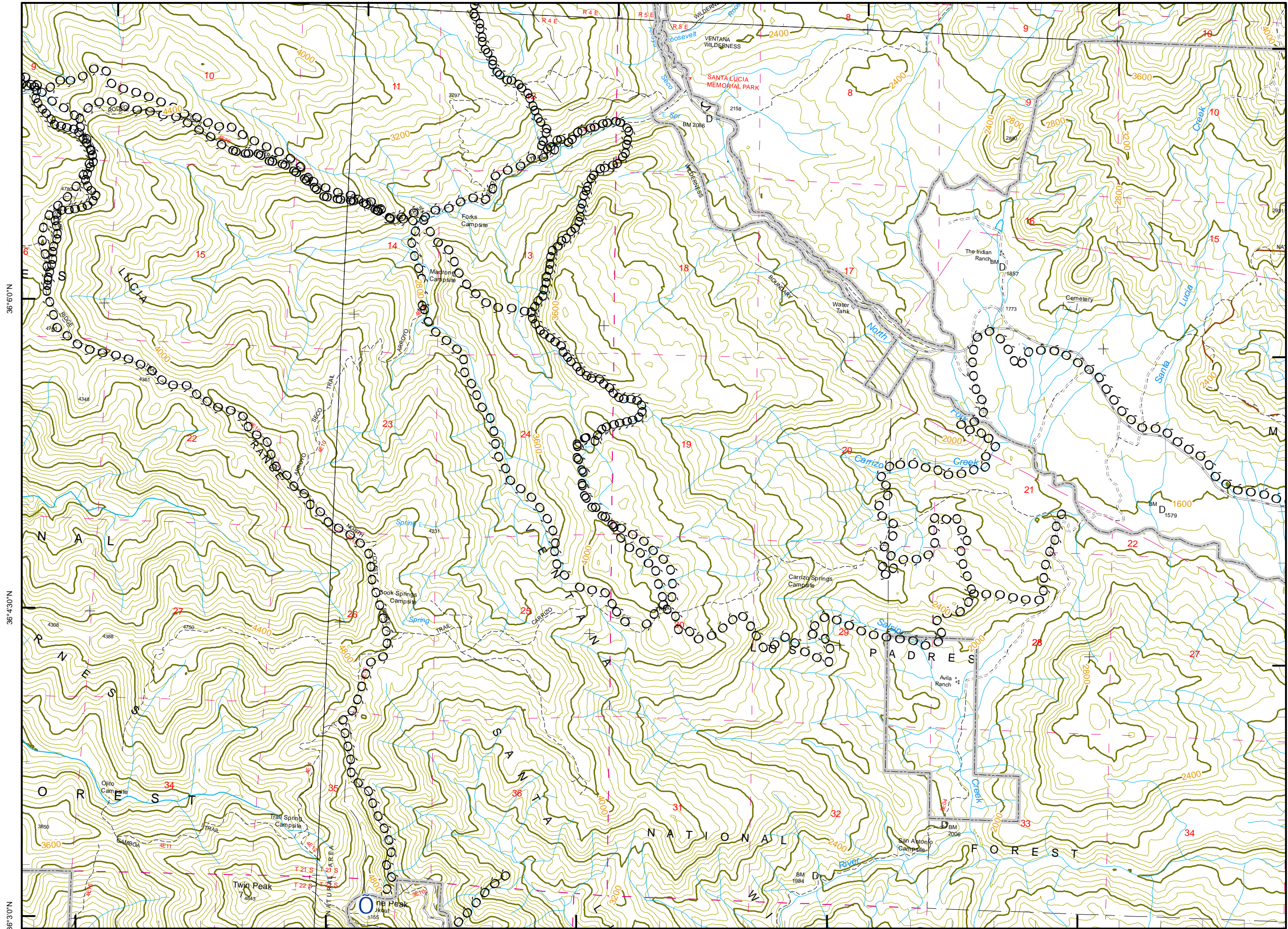
# F

### Legend

-  Incident Command Post
-  Camp
-  Staging Area
-  Water Source
-  Helibase
-  Mobil Weather Unit
-  Repeater
-  Drop Point
-  Helispot
-  Safety Zone
-  Retardant Pickup
-  Road Hazard
-  Division
-  Branch
-  Completed Dozer Line
-  Proposed Dozer Line
-  Planned Fire Line
-  Uncontrolled Fire Edge
-  Completed Line
-  Hand Line
-  Roads
-  Trails
-  Wilderness



# 202



36°50'0"N

36°43'0"N

36°3'0"N

36°7'30"N

36°0'0"N

36°43'0"N

121°31'30"W

121°30'0"W

121°28'30"W

121°27'0"W

121°25'30"W