

121°25'30"W

121°24'0"W

121°22'30"W

121°21'0"W

121°19'30"W

36°00'0"N

36°00'0"N

35°58'30"N

35°58'30"N

35°57'0"N

35°57'0"N

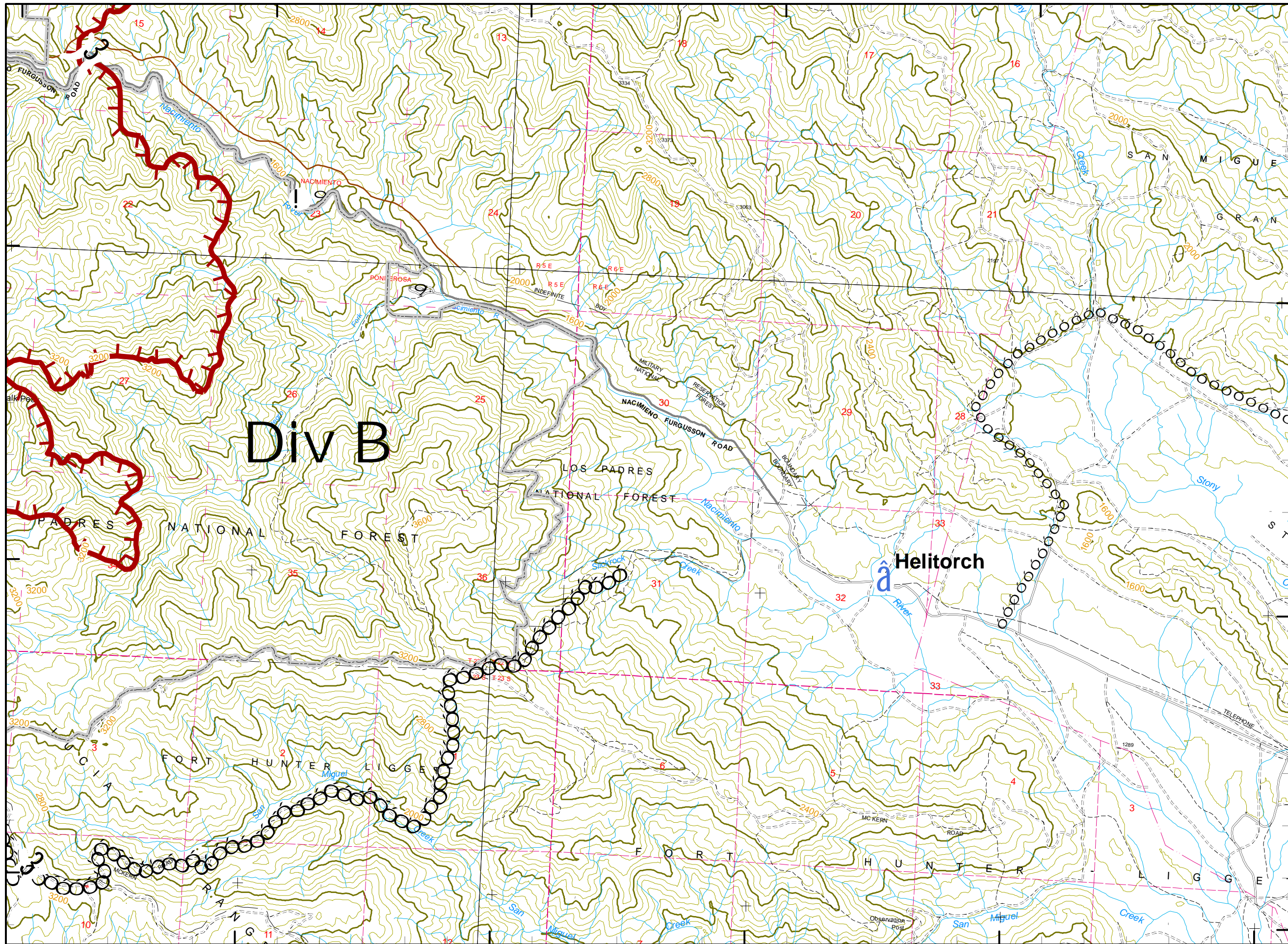
121°24'0"W

121°22'30"W

121°21'0"W

121°19'30"W

121°18'0"W



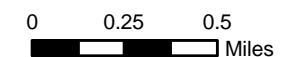
Chalk Fire

CA-LPF-002754

F

Legend

- Incident Command Post
- Camp
- Staging Area
- Water Source
- Helibase
- Mobil Weather Unit
- Repeater
- Drop Point
- Helispot
- Safety Zone
- Retardant Pickup
- Road Hazard
- Division
- Branch
- Completed Dozer Line
- Proposed Dozer Line
- Planned Fire Line
- Uncontrolled Fire Edge
- Completed Line
- Hand Line
- Roads
- Trails
- Wilderness



Contour Interval 20 feet



402