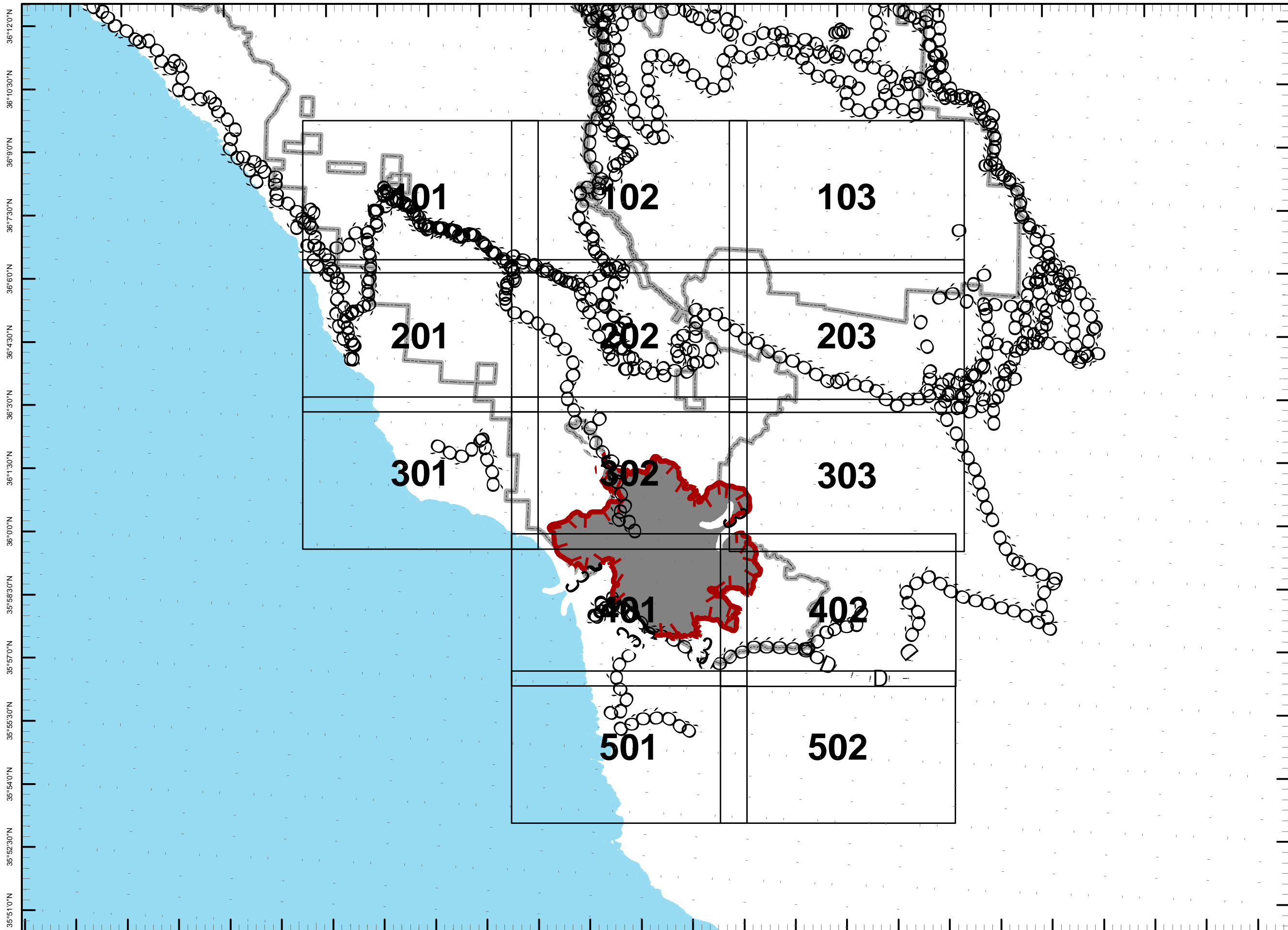


121°45'0"W 121°43'30"W 121°42'0"W 121°40'30"W 121°39'0"W 121°37'30"W 121°36'0"W 121°34'30"W 121°33'0"W 121°31'30"W 121°30'0"W 121°28'30"W 121°27'0"W 121°25'30"W 121°24'0"W 121°22'30"W 121°21'0"W 121°19'30"W 121°18'0"W 121°16'30"W 121°15'0"W 121°13'30"W 121°12'0"W 121°10'30"W



121°45'0"W 121°43'30"W 121°42'0"W 121°40'30"W 121°39'0"W 121°37'30"W 121°36'0"W 121°34'30"W 121°33'0"W 121°31'30"W 121°30'0"W 121°28'30"W 121°27'0"W 121°25'30"W 121°24'0"W 121°22'30"W 121°21'0"W 121°19'30"W 121°18'0"W 121°16'30"W 121°15'0"W 121°13'30"W 121°12'0"W 121°10'30"W 121°9'0"W

Chalk Fire

CA-LPF-002754
October 3, 2008
AM Operational Period
0600 to 1800
10,073 Acres

F

Legend

- Incident Command Post
- Camp
- Staging Area
- Water Source
- Helibase
- Mobil Weather Unit
- Repeater
- Drop Point
- Helispot
- Safety Zone
- Retardant Pickup
- Road Hazard
- Division
- Branch

- Completed Dozer Line
- Proposed Dozer Line
- Planned Fire Line
- Uncontrolled Fire Edge
- Completed Line
- Hand Line
- Roads
- Trails
- Wilderness

