

121°30'0"W

121°28'30"W

121°27'0"W

121°25'30"W

35°57'0"N

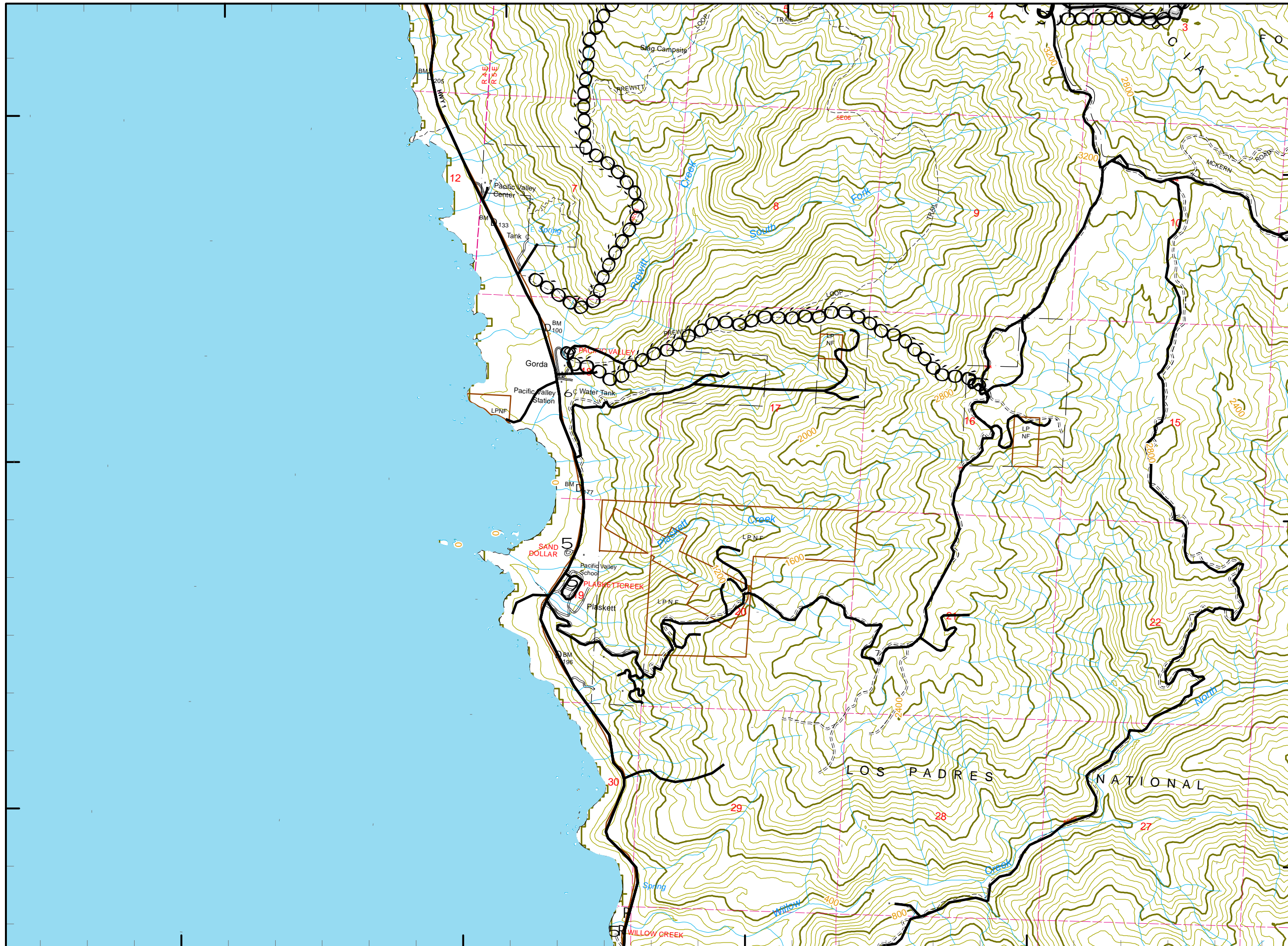
35°55'30"N

35°54'0"N

35°57'0"N

35°55'30"N

35°54'0"N



121°30'0"W

121°28'30"W

121°27'0"W

121°25'30"W

# Chalk Fire

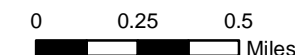
CA-LPF-002754

Oct 3, 2008

# F

### Legend

- Incident Command Post
- Camp
- Staging Area
- Water Source
- Helibase
- Mobil Weather Unit
- Repeater
- Drop Point
- Helispot
- Safety Zone
- Retardant Pickup
- Road Hazard
- Division
- Branch
- Completed Dozer Line
- Proposed Dozer Line
- Planned Fire Line
- Uncontrolled Fire Edge
- Completed Line
- Hand Line
- Roads
- Trails
- Wilderness



Contour Interval 20 feet  
Scale: 1:30,000



# 501