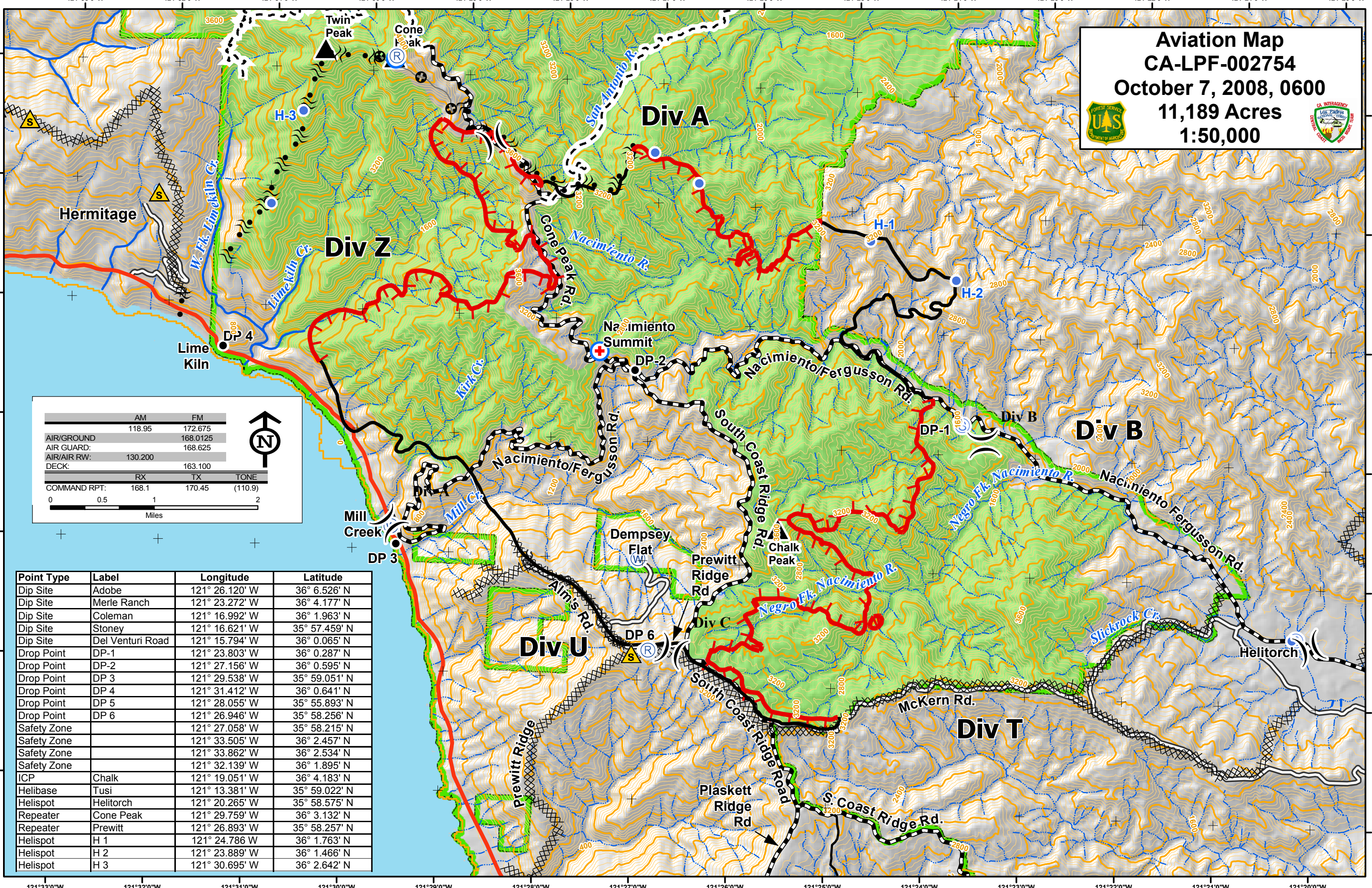


Aviation Map
CA-LPF-002754
October 7, 2008, 0600
11,189 Acres
1:50,000

AM	FM		
118.95	172.675		
AIR/GROUND	168.0125		
AIR GUARD:	168.625		
AIR/AIR RW:	130.200		
DECK:	163.100		
COMMAND RPT:	168.1	170.45	(110.9)

0 0.5 1 2 Miles

Point Type	Label	Longitude	Latitude
Dip Site	Adobe	121° 26.120' W	36° 6.526' N
Dip Site	Merle Ranch	121° 23.272' W	36° 4.177' N
Dip Site	Coleman	121° 16.992' W	36° 1.963' N
Dip Site	Stoney	121° 16.621' W	35° 57.459' N
Dip Site	Del Venturi Road	121° 15.794' W	36° 0.065' N
Drop Point	DP-1	121° 23.803' W	36° 0.287' N
Drop Point	DP-2	121° 27.156' W	36° 0.595' N
Drop Point	DP 3	121° 29.538' W	35° 59.051' N
Drop Point	DP 4	121° 31.412' W	36° 0.641' N
Drop Point	DP 5	121° 28.055' W	35° 55.893' N
Drop Point	DP 6	121° 26.946' W	35° 58.256' N
Safety Zone		121° 27.058' W	35° 58.215' N
Safety Zone		121° 33.505' W	36° 2.457' N
Safety Zone		121° 33.862' W	36° 2.534' N
Safety Zone		121° 32.139' W	36° 1.895' N
ICP	Chalk	121° 19.051' W	36° 4.183' N
Helibase	Tusi	121° 13.381' W	35° 59.022' N
Helispot	Helitorch	121° 20.265' W	35° 58.575' N
Repeater	Cone Peak	121° 29.759' W	36° 3.132' N
Repeater	Prewitt	121° 26.893' W	35° 58.257' N
Helispot	H 1	121° 24.786 W	36° 1.763' N
Helispot	H 2	121° 23.889' W	36° 1.466' N
Helispot	H 3	121° 30.695' W	36° 2.642' N



121°33'0"W 121°32'0"W 121°31'0"W 121°30'0"W 121°29'0"W 121°28'0"W 121°27'0"W 121°26'0"W 121°25'0"W 121°24'0"W 121°23'0"W 121°22'0"W 121°21'0"W 121°20'0"W