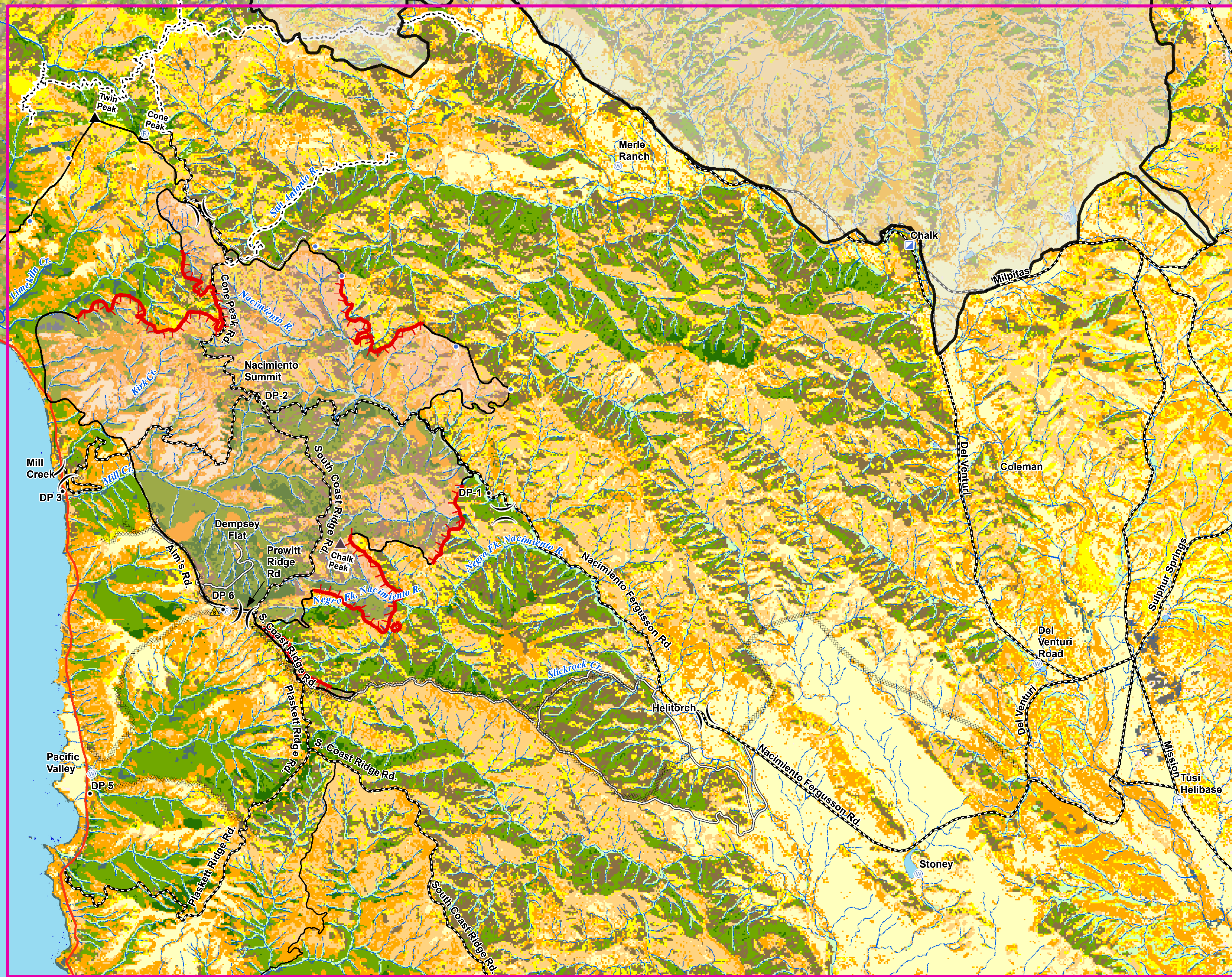
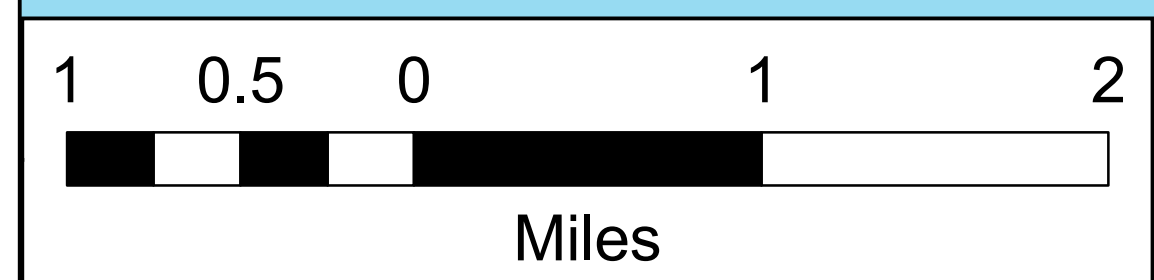
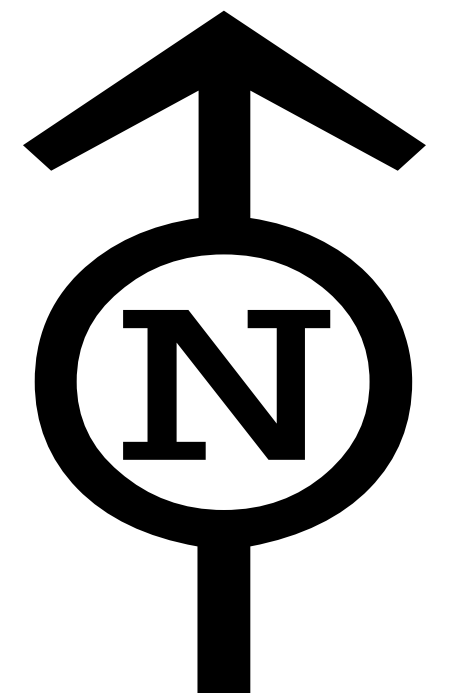


**Fuel Model/Fuel Model 13  
Chalk Fire  
CA-LPF-002754  
October 7, 2008 at 0600  
11,189 Acres  
1:35,000**



**Fire Behavior/Fuel Model Analysis**

- Analysis Boundary
- Agriculture
- Barren
- FBFM1
- FBFM10
- FBFM2
- FBFM4
- FBFM5
- FBFM7
- FBFM8
- FBFM9
- Urban
- Water
- Fire Features**
- Fire Perimeter
- Basin/Indians Perimeter
- Uncontrolled Fire Edge
- Completed Dozer Line
- Completed Line
- Hand Line
- Proposed Hand Line
- Division Break
- Safety Zone
- Water Source
- Drop Point
- Incident Command Post
- Helibase
- Helispot
- Repeater
- Base Layers**
- Highway 1
- Major Roads
- Other Roads
- Trails
- Peaks
- Ventana Wilderness
- Perennial Streams and Rivers
- Intermittent Streams
- Lakes and Ponds



| Fire Behavior/Fuel Model | Fire Behavior/Fuel Model Acres | Fire Behavior/Fuel Model Percent |
|--------------------------|--------------------------------|----------------------------------|
| FBFM1                    | 20,914                         | 16%                              |
| FBFM2                    | 13,463                         | 11%                              |
| FBFM4                    | 24,712                         | 19%                              |
| FBFM5                    | 22,841                         | 18%                              |
| FBFM7                    | 15,575                         | 12%                              |
| FBFM8                    | 8,185                          | 6%                               |
| FBFM9                    | 14,194                         | 11%                              |
| FBFM10                   | 1,980                          | 2%                               |
| Urban                    | 217                            | 0%                               |
| Agriculture              | 739                            | 1%                               |
| Water                    | 3,188                          | 3%                               |
| Barren                   | 875                            | 1%                               |