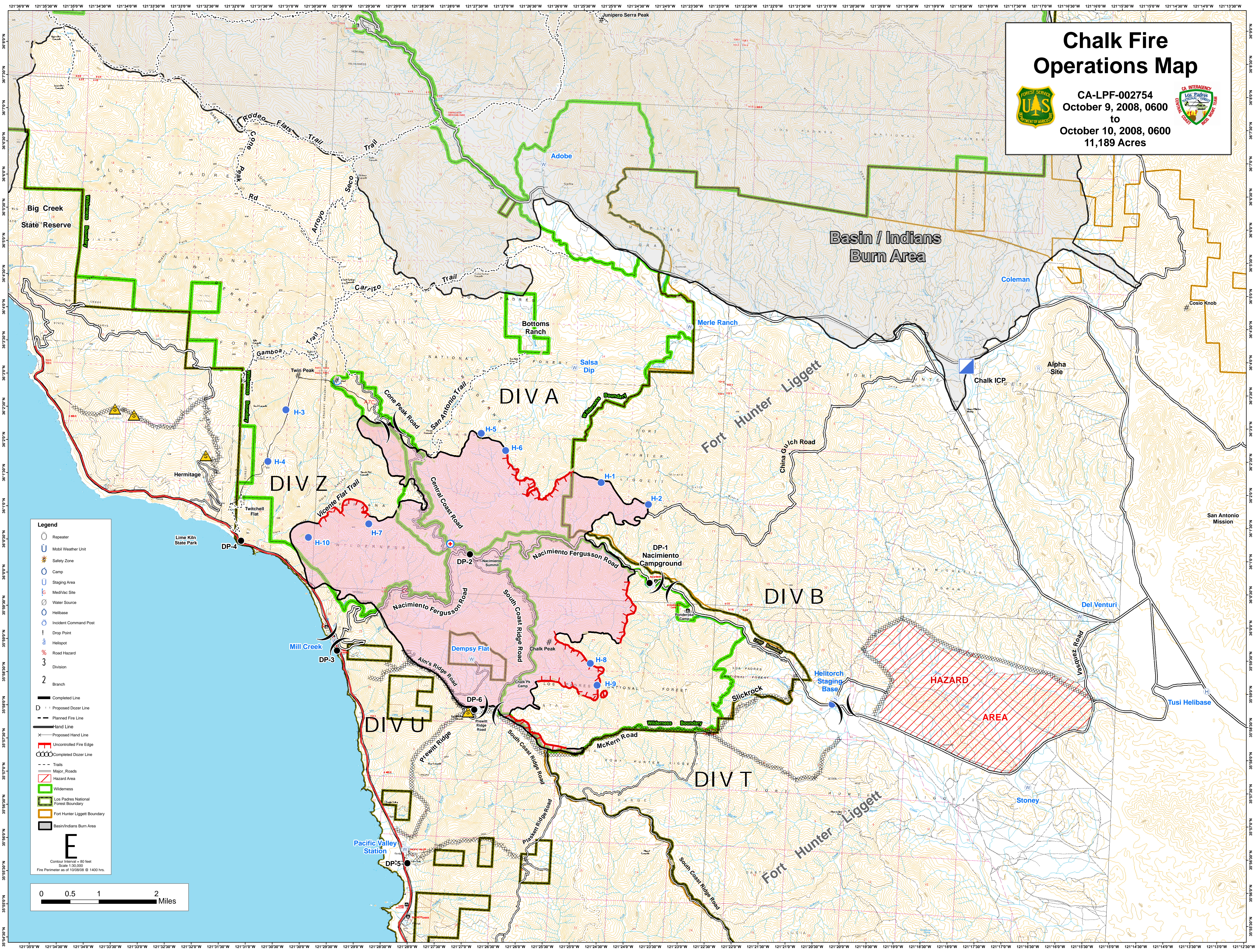


Chalk Fire Operations Map



CA-LPF-002754
October 9, 2008, 0600
to
October 10, 2008, 0600
11,189 Acres



Legend

- Repeater
- U Mobil Weather Unit
- ⚠ Safety Zone
- Camp
- U Staging Area
- ⚕ Med/Vac Site
- Water Source
- Helibase
- Incident Command Post
- ! Drop Point
- ⚡ Helispot
- ⚠ Road Hazard
- 3 Division
- 2 Branch
- Completed Line
- D - - Proposed Dozer Line
- - Planned Fire Line
- - Hand Line
- X - - Proposed Hand Line
- Uncontrolled Fire Edge
- Completed Dozer Line
- - Trails
- Major Roads
- ▨ Hazard Area
- ▨ Wilderness
- ▨ Los Padres National Forest Boundary
- ▨ Fort Hunter Liggett Boundary
- ▨ Basin/Indians Burn Area

E
Contour Interval = 60 feet
Scale 1:30,000
Fire Perimeter as of 10/09/08 @ 1400 hrs.

