

# Chalk Fire Operations Map

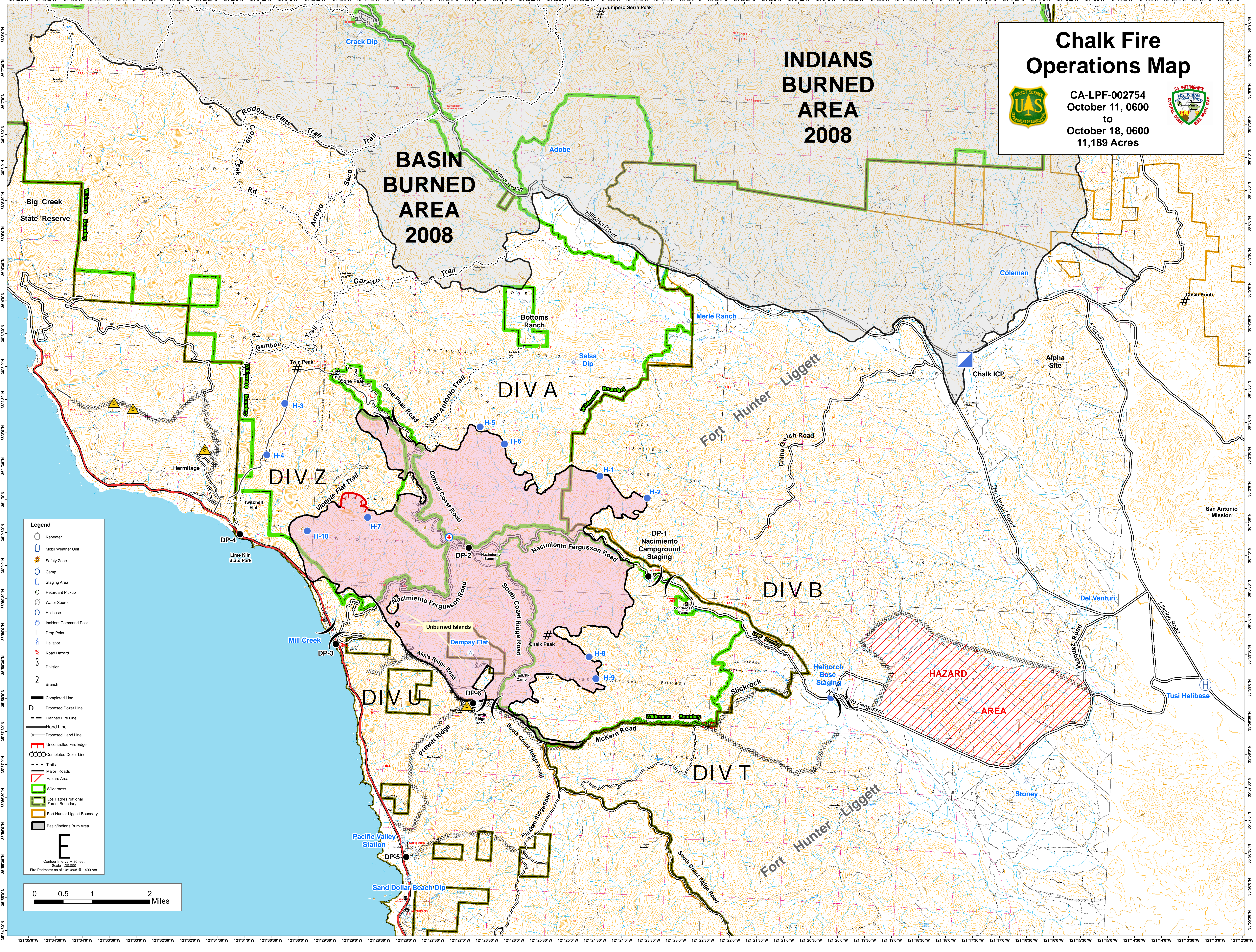


CA-LPF-002754  
 October 11, 0600  
 to  
 October 18, 0600  
 11,189 Acres



## INDIANS BURNED AREA 2008

## BASIN BURNED AREA 2008



**Legend**

- Repeater
- U Mobil Weather Unit
- ⊕ Safety Zone
- Camp
- U Staging Area
- C Retardant Pickup
- Water Source
- Helibase
- Incident Command Post
- ! Drop Point
- ! Helispot
- ⚠ Road Hazard
- 3 Division
- 2 Branch
- Completed Line
- D - - - Proposed Dozer Line
- - - Planned Fire Line
- Hand Line
- X - - - Proposed Hand Line
- Uncontrolled Fire Edge
- Completed Dozer Line
- - - Trails
- Major Roads
- ▨ Hazard Area
- ▭ Wilderness
- ▭ Los Padres National Forest Boundary
- ▭ Fort Hunter Liggett Boundary
- ▭ Basin/Indians Burn Area

**E**  
 Contour Interval = 60 feet  
 Scale 1:30,000  
 Fire Perimeter as of 10/10/08 @ 1400 hrs.

