

121°37'30"W

121°36'0"W

121°34'30"W

121°33'0"W

121°31'30"W

36°30'0"N

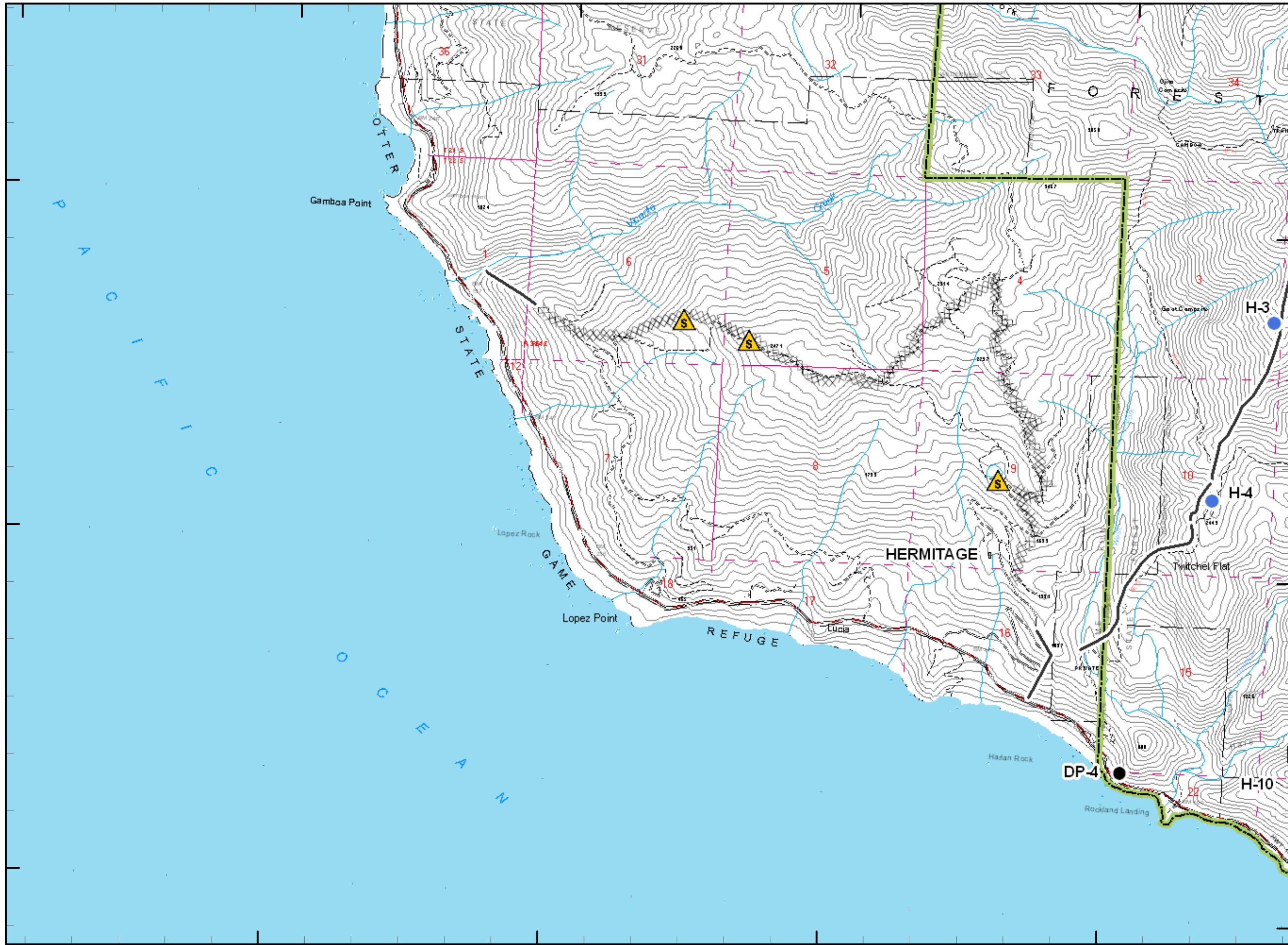
36°13'0"N

36°0'0"N

36°30'0"N

36°13'0"N

36°0'0"N



121°36'0"W

121°34'30"W

121°33'0"W

121°31'30"W

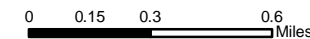
Chalk Fire

CA-LPF-002754
October 11, 0600
to
October 18, 0600
11,189 Acres

F

Legend

- Incident Command Post
- MediVac Site
- Staging Area
- Water Source
- Helibase
- Mobil Weather Unit
- Repeater
- Drop Point
- Helispot
- Safety Zone
- Retardant Pickup
- Road Hazard
- Division
- Branch
- Completed Dozer Line
- Proposed Dozer Line
- Uncontrolled Fire Edge
- Completed Line
- Hand Line
- Roads
- Trails
- Wilderness
- Forest Boundary
- Hunter Liggett Boundary



80 Foot Contour Interval
Scale 1:30,000

201

