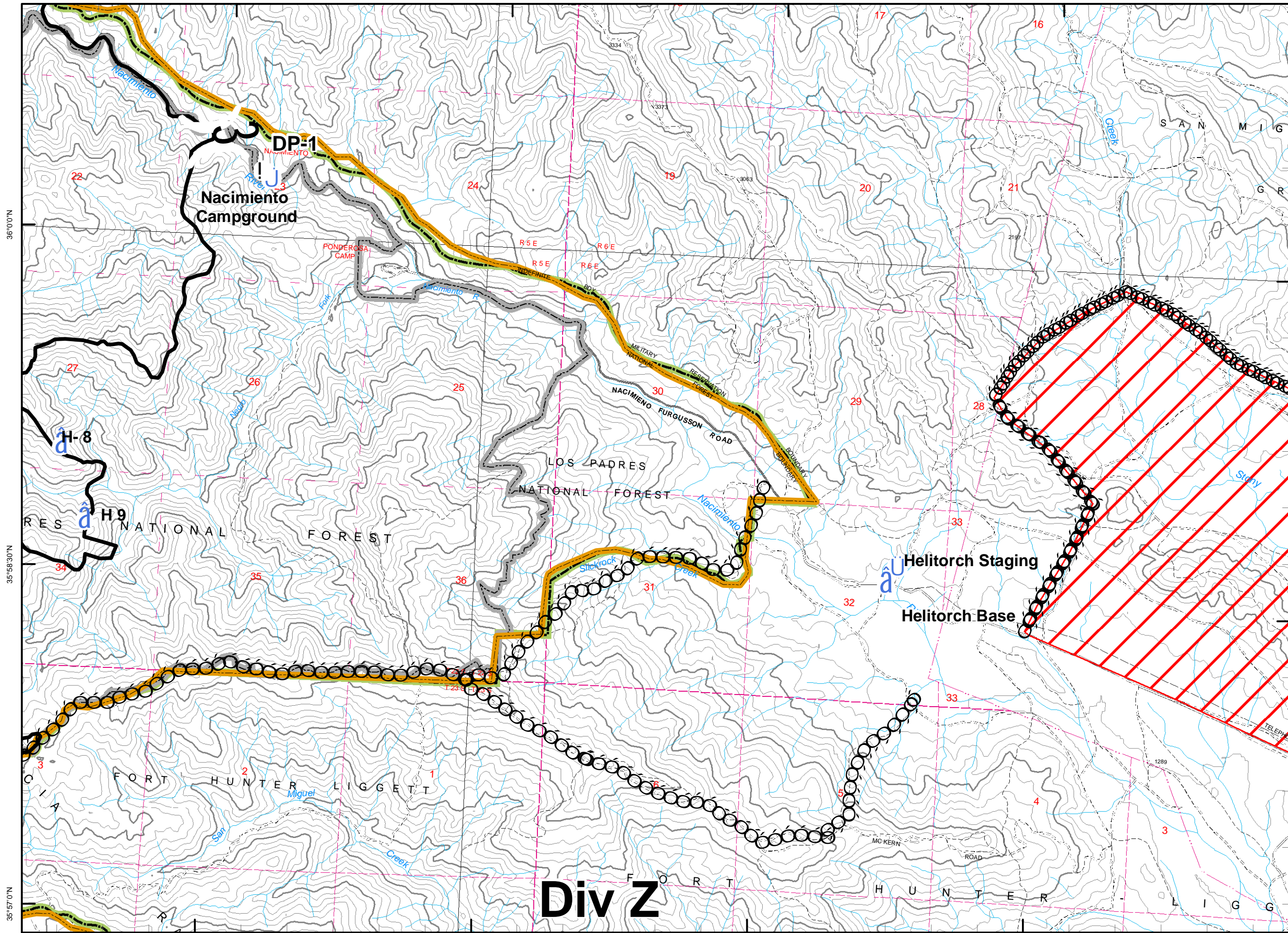


121°24'0"W

121°22'30"W

121°21'0"W

121°19'30"W



36°0'0"N

35°58'30"N

35°57'0"N

36°0'0"N

35°58'30"N

121°24'0"W

121°22'30"W

121°21'0"W

121°19'30"W

Chalk Fire

CA-LPF-002754
October 18, 1800
13,410 Acres

F

Legend

- Incident Command Post
- MediVac Site
- Staging Area
- Water Source
- Helibase
- Mobil Weather Unit
- Repeater
- Drop Point
- Helispot
- Safety Zone
- Retardant Pickup
- Road Hazard
- Division
- Branch
- Completed Dozer Line
- Proposed Dozer Line
- Uncontrolled Fire Edge
- Completed Line
- Hand Line
- Roads
- Trails
- Wilderness
- Forest Boundary
- Hunter Liggett Boundary

0 0.15 0.3 0.6 Miles

80 Foot Contour Interval
Scale 1:30,000

302



Mark T. Smith GISS, 10/18/08, 1400