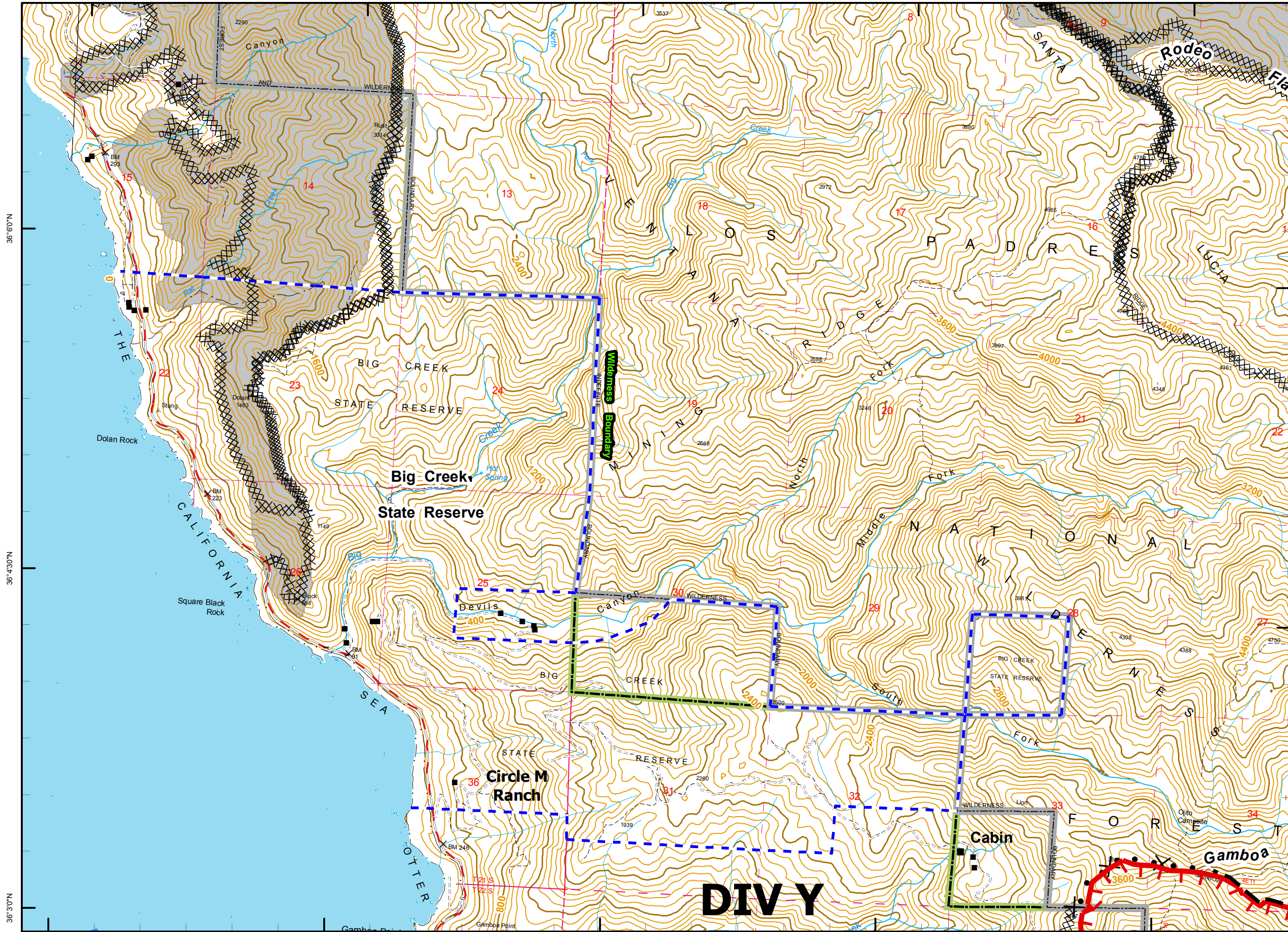


121°37'30"W 121°36'0"W 121°34'30"W 121°33'0"W 121°31'30"W



36°6'0"N

36°4'30"N

36°3'0"N

36°6'0"N

36°4'30"N

36°3'0"N

121°37'30"W 121°36'0"W 121°34'30"W 121°33'0"W 121°31'30"W

Chalk Fire

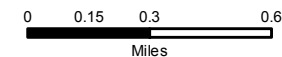
CA-LPF-002754
October 20, 1800
15,359 Acres

Fire Perimeter as of 10/19/08 @ 1935 hrs.



Legend

-  Incident Command Post
-  MediVac Site
-  Staging Area
-  Water Source
-  Helibase
-  Mobil Weather Unit
-  Repeater
-  Drop Point
-  Helispot
-  Safety Zone
-  Retardant Pickup
-  Road Hazard
-  Division
-  Branch
-  Completed Dozer Line
-  Proposed Dozer Line
-  Uncontrolled Fire Edge
-  Completed Line
-  Hand Line
-  Roads
-  Trails
-  Wilderness
-  Forest Boundary
-  Hunter Liggett Boundary
-  Big Creek Reserve



80 Foot Contour Interval
Scale 1:30,000

100

