

121°31'30"W

121°30'0"W

121°28'30"W

121°27'0"W

121°25'30"W

36°30'0"N

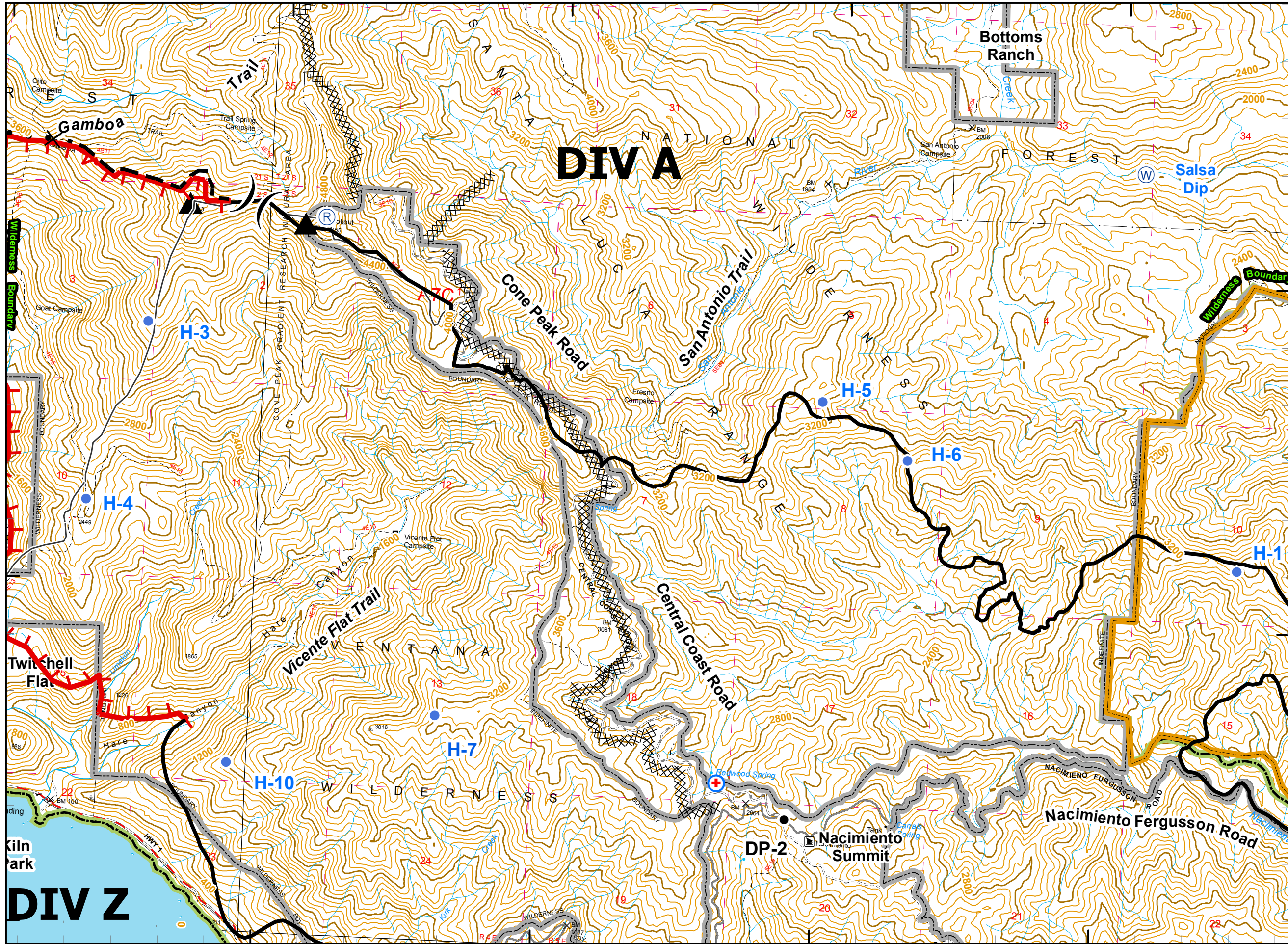
36°13'0"N

36°0'0"N

36°30'0"N

36°13'0"N

36°0'0"N



Chalk Fire

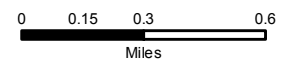
CA-LPF-002754
October 20, 1800
15,359 Acres

Fire Perimeter as of 10/19/08 @ 1935 hrs.



Legend

- Incident Command Post
- MediVac Site
- Staging Area
- Water Source
- Helibase
- Mobil Weather Unit
- Repeater
- Drop Point
- Helispot
- Safety Zone
- Retardant Pickup
- Road Hazard
- Division
- Branch
- Completed Dozer Line
- Proposed Dozer Line
- Uncontrolled Fire Edge
- Completed Line
- Hand Line
- Roads
- Trails
- Wilderness
- Forest Boundary
- Hunter Liggett Boundary
- Big Creek Reserve



80 Foot Contour Interval
Scale 1:30,000

201

