

121°30'0"W 121°28'30"W 121°27'0"W 121°25'30"W

35°57'0"N

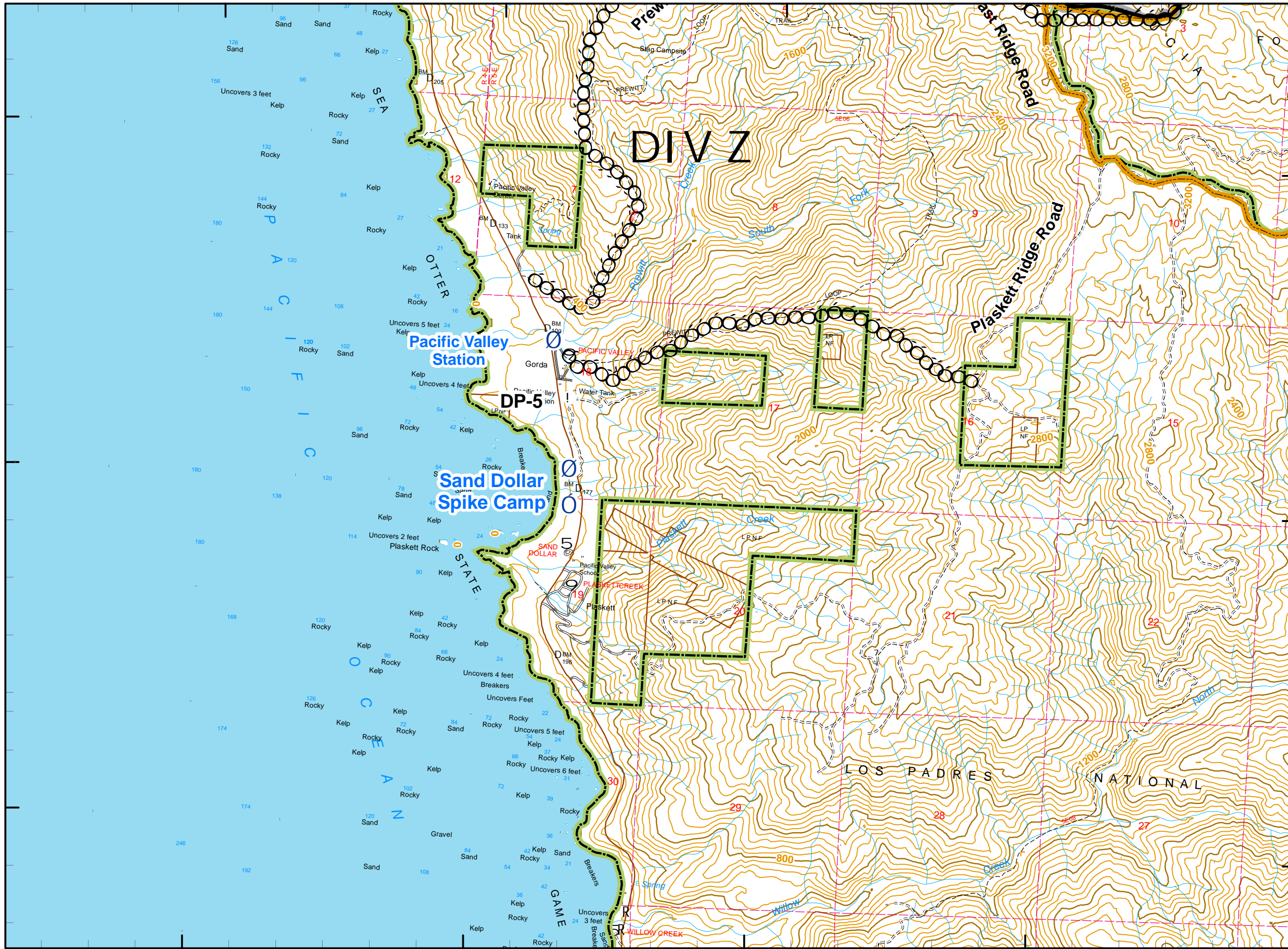
35°55'30"N

35°54'0"N

35°57'0"N

35°55'30"N

35°54'0"N



121°30'0"W 121°28'30"W 121°27'0"W 121°25'30"W

Chalk Fire

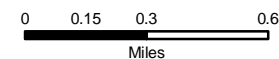
CA-LPF-002754
October 22, 0600 to
October 23, 0600
15,568 Acres

Fire Perimeter as of 10/21/08 @ 1930 hrs.

F

Legend

- Incident Command Post
- MediVac Site
- Staging Area
- Water Source
- Helibase
- Mobil Weather Unit
- Repeater
- Drop Point
- Helispot
- Safety Zone
- Retardant Pickup
- Road Hazard
- Division
- Branch
- Completed Dozer Line
- Proposed Dozer Line
- Uncontrolled Fire Edge
- Completed Line
- Hand Line
- Roads
- Trails
- Wilderness
- Forest Boundary
- Hunter Liggett Boundary
- Big Creek Reserve



80 Foot Contour Interval
Scale 1:30,000

401

