

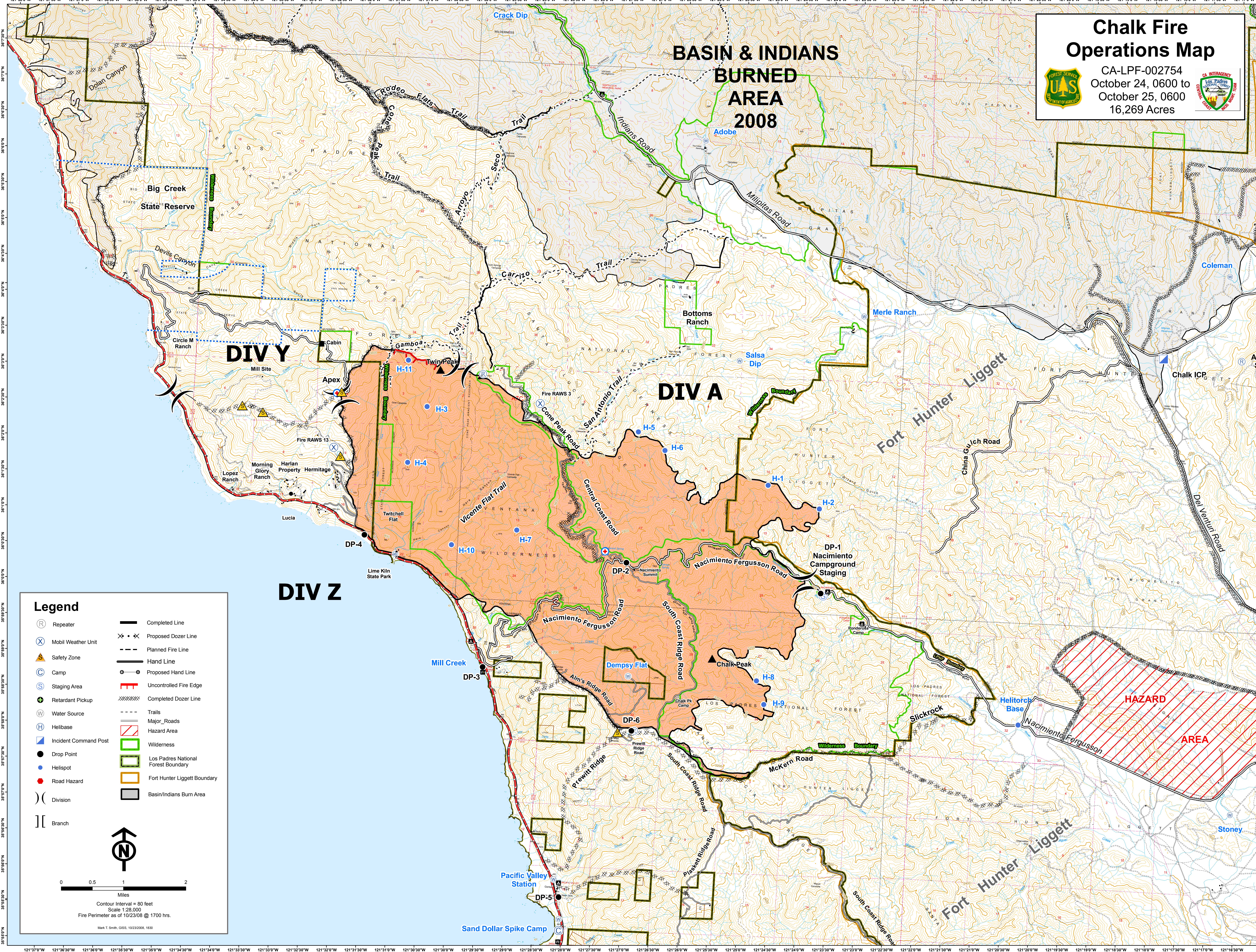
Chalk Fire Operations Map



CA-LPF-002754
 October 24, 0600 to
 October 25, 0600
 16,269 Acres

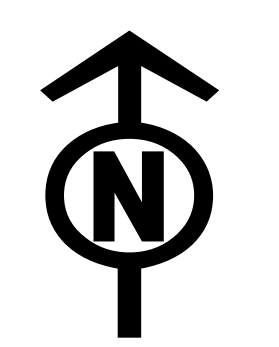


BASIN & INDIANS BURNED AREA 2008



Legend

- | | | | |
|-------|-----------------------|-------|-------------------------------------|
| (R) | Repeater | — | Completed Line |
| (X) | Mobil Weather Unit | ⊗ | Proposed Dozer Line |
| (A) | Safety Zone | - - - | Planned Fire Line |
| (C) | Camp | — | Hand Line |
| (S) | Staging Area | — | Proposed Hand Line |
| (P) | Retardant Pickup | — | Uncontrolled Fire Edge |
| (W) | Water Source | ⊗ | Completed Dozer Line |
| (H) | Helibase | - - - | Trails |
| (ICP) | Incident Command Post | — | Major_Roads |
| (DP) | Drop Point | ⊗ | Hazard Area |
| (HS) | Helispot | ⊗ | Wilderness |
| (RH) | Road Hazard | ⊗ | Los Padres National Forest Boundary |
| (D) | Division | ⊗ | Fort Hunter Liggett Boundary |
| (B) | Branch | ⊗ | Basin/Indians Burn Area |



0 0.5 1 2
 Miles

Contour Interval = 80 feet
 Scale 1:28,000
 Fire Perimeter as of 10/23/08 @ 1700 hrs.

Mark T. Smith, GIS, 10/23/08, 1830