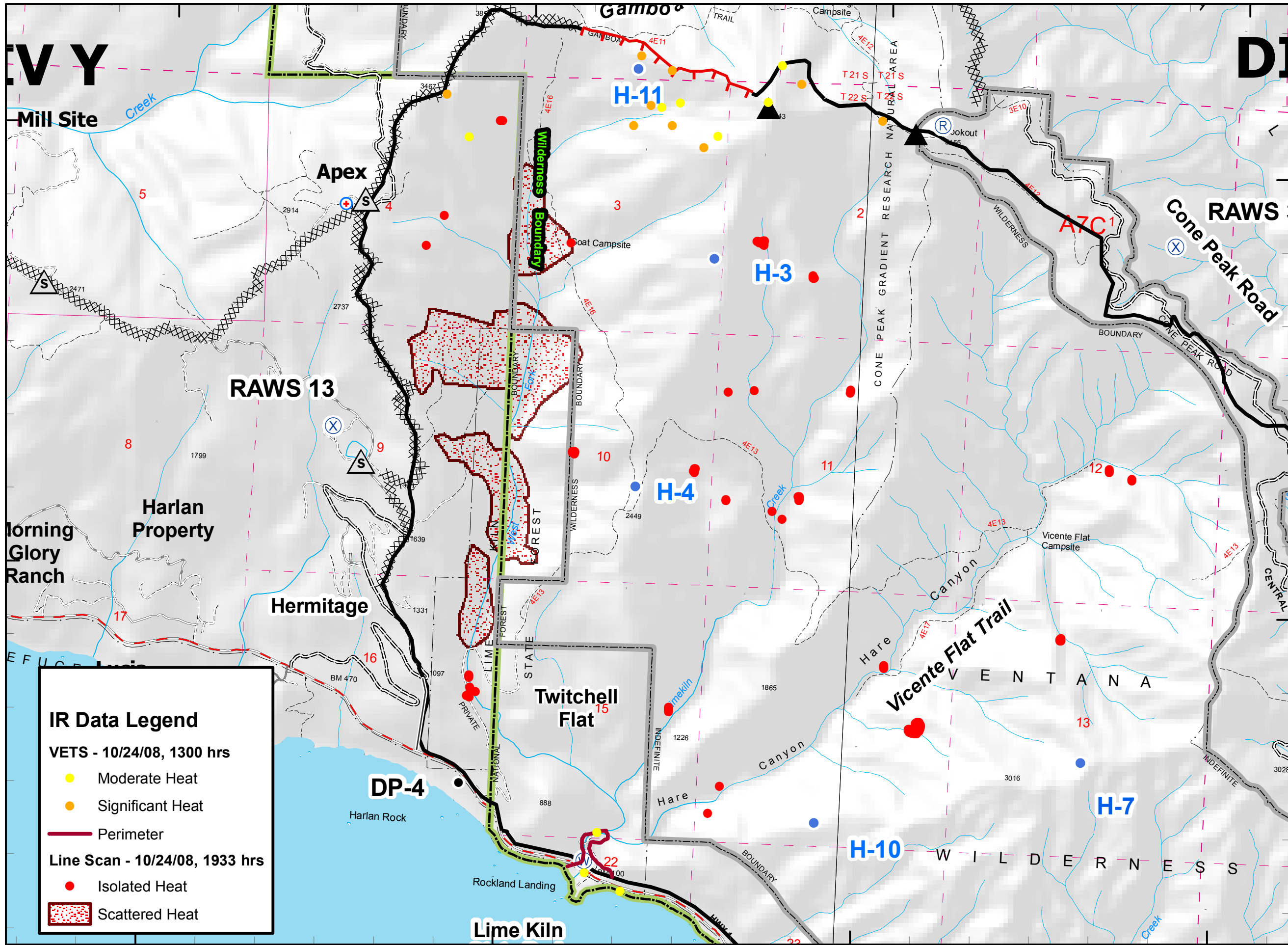


121°33'0"W

121°31'30"W

121°30'0"W

121°28'30"W



IR Data Legend

VETS - 10/24/08, 1300 hrs

- Moderate Heat
- Significant Heat

Line Scan - 10/24/08, 1933 hrs

- Perimeter
- Isolated Heat
- Scattered Heat

Chalk Fire

IR MAP

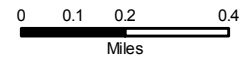
CA-LPF-002754
October 25, 2008

Fire Perimeter Current as of 10/23/08, 1700 hrs.



Legend

- Incident Command Post
- MediVac Site
- Staging Area
- Water Source
- Helibase
- Mobil Weather Unit
- Repeater
- Drop Point
- Helispot
- Safety Zone
- Retardant Pickup
- Road Hazard
- Division
- Branch
- Completed Dozer Line
- Proposed Dozer Line
- Uncontrolled Fire Edge
- Completed Line
- Hand Line
- Roads
- Trails
- Wilderness
- Forest Boundary
- Hunter Liggett Boundary



Scale 1:30,000

