

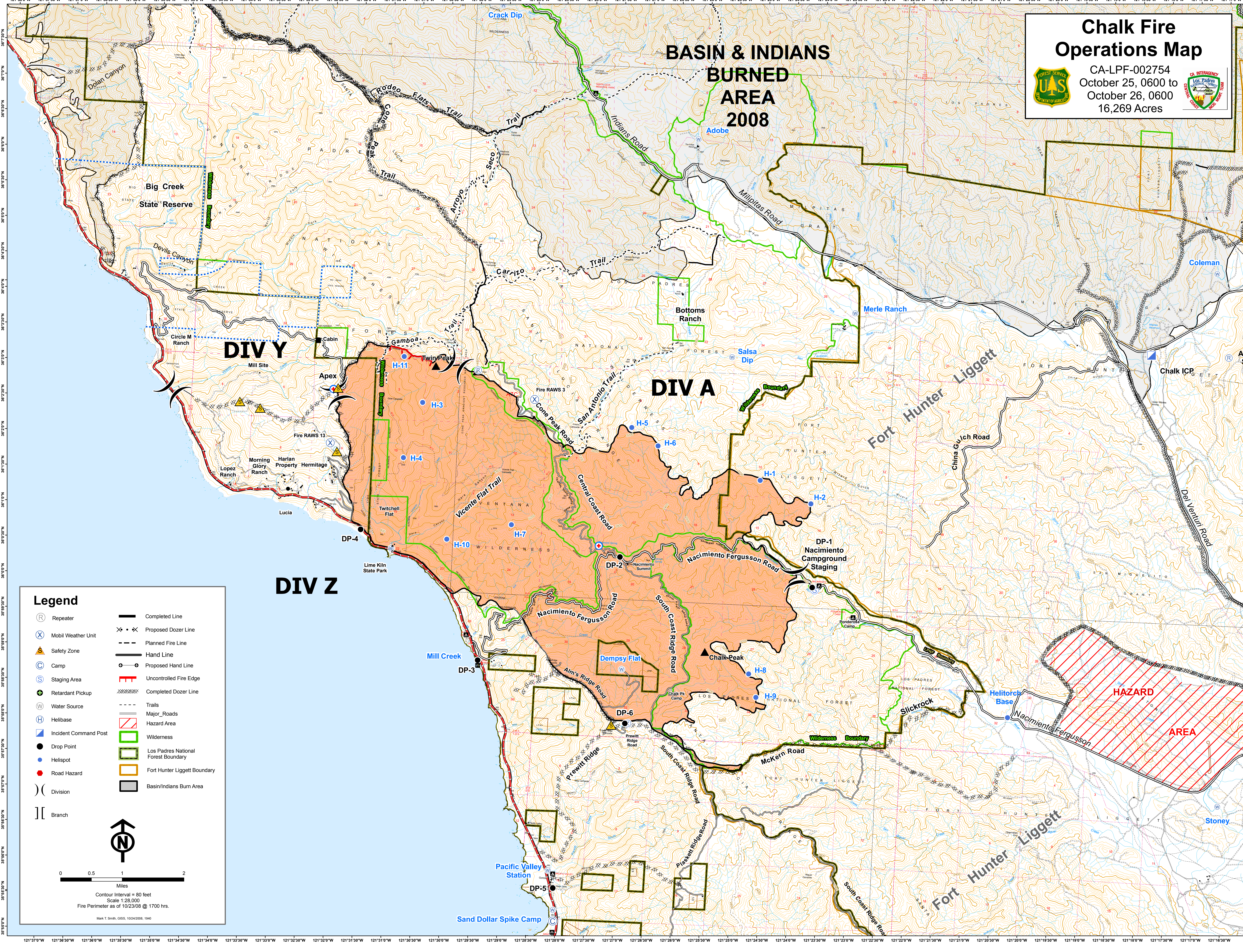
Chalk Fire Operations Map



CA-LPF-002754
 October 25, 0600 to
 October 26, 0600
 16,269 Acres

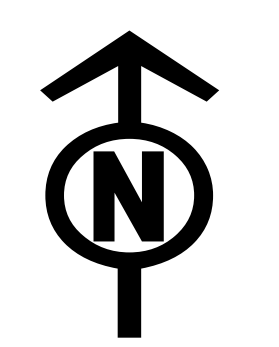


BASIN & INDIANS BURNED AREA 2008



Legend

- | | | | |
|-------|-----------------------|--------|-------------------------------------|
| (R) | Repeater | — | Completed Line |
| (X) | Mobil Weather Unit | —x—x— | Proposed Dozer Line |
| (S) | Safety Zone | - - - | Planned Fire Line |
| (C) | Camp | — | Hand Line |
| (S) | Staging Area | —o—o— | Proposed Hand Line |
| (P) | Retardant Pickup | — | Uncontrolled Fire Edge |
| (W) | Water Source | xxxxxx | Completed Dozer Line |
| (H) | Helibase | - - - | Trails |
| (ICP) | Incident Command Post | — | Major_Roads |
| (DP) | Drop Point | ▨ | Hazard Area |
| (HS) | Helispot | ▭ | Wilderness |
| (RH) | Road Hazard | ▭ | Los Padres National Forest Boundary |
| (D) | Division | ▭ | Fort Hunter Liggett Boundary |
| (B) | Branch | ▭ | Basin/Indians Burn Area |



Contour Interval = 80 feet
 Scale 1:28,000
 Fire Perimeter as of 10/23/08 @ 1700 hrs.

Mark T. Smith, GIS, 10/24/2008, 1940