

121°30'0"W

121°28'30"W

121°27'0"W

121°25'30"W

35°57'0"N

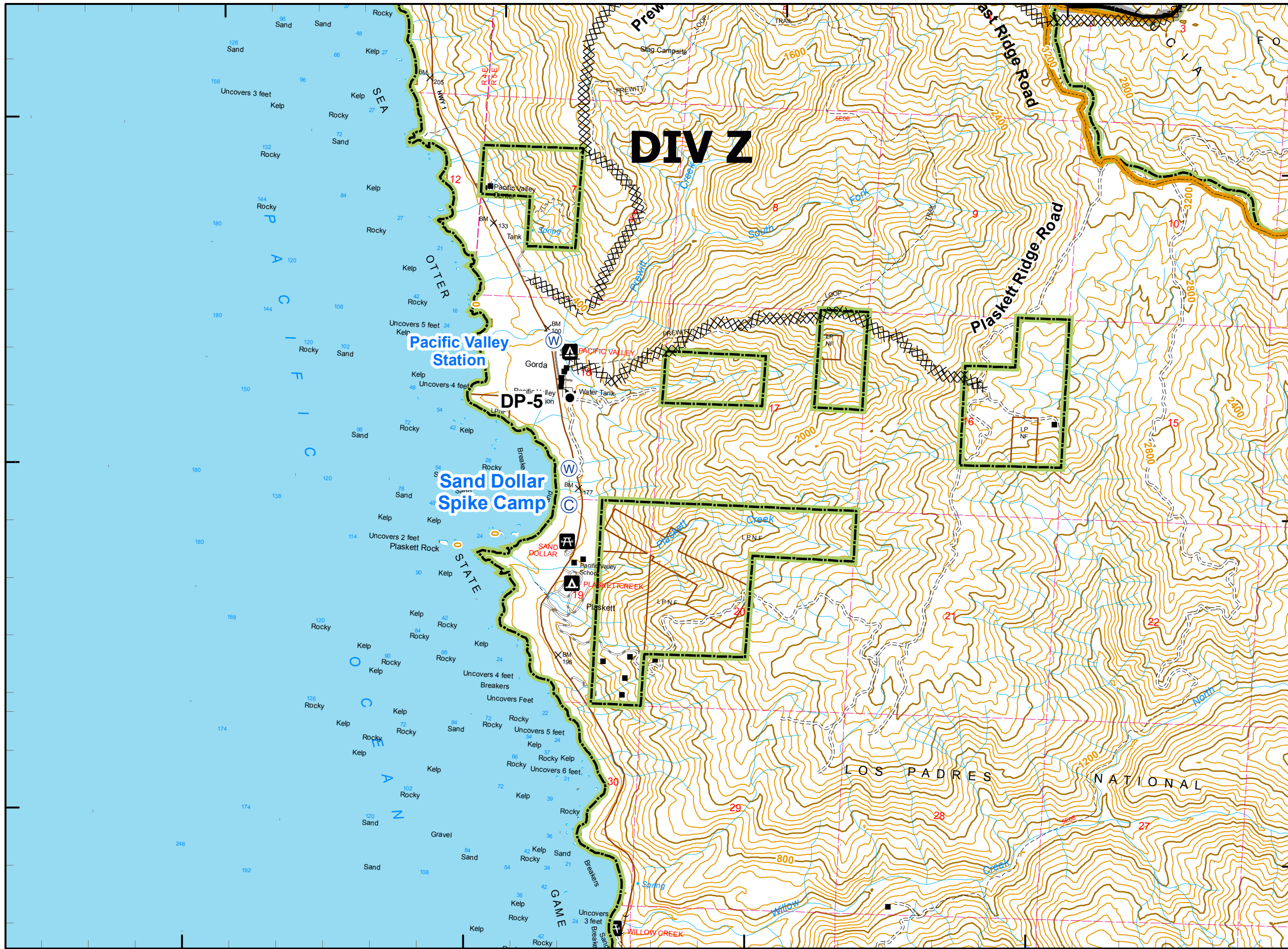
35°55'30"N

35°54'0"N

35°57'0"N

35°55'30"N

35°54'0"N



121°30'0"W

121°28'30"W

121°27'0"W

121°25'30"W

Chalk Fire

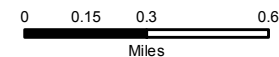
CA-LPF-002754
October 25, 0600 to
October 26, 0600
16,269 Acres

Fire Perimeter as of 10/23/08 @ 1700 hrs.



Legend

-  Incident Command Post
-  MediVac Site
-  Staging Area
-  Water Source
-  Helibase
-  Mobil Weather Unit
-  Repeater
-  Drop Point
-  Helispot
-  Safety Zone
-  Retardant Pickup
-  Road Hazard
-  Division
-  Branch
-  Completed Dozer Line
-  Proposed Dozer Line
-  Uncontrolled Fire Edge
-  Completed Line
-  Hand Line
-  Roads
-  Trails
-  Wilderness
-  Forest Boundary
-  Hunter Liggett Boundary
-  Big Creek Reserve



80 Foot Contour Interval
Scale 1:30,000

401

