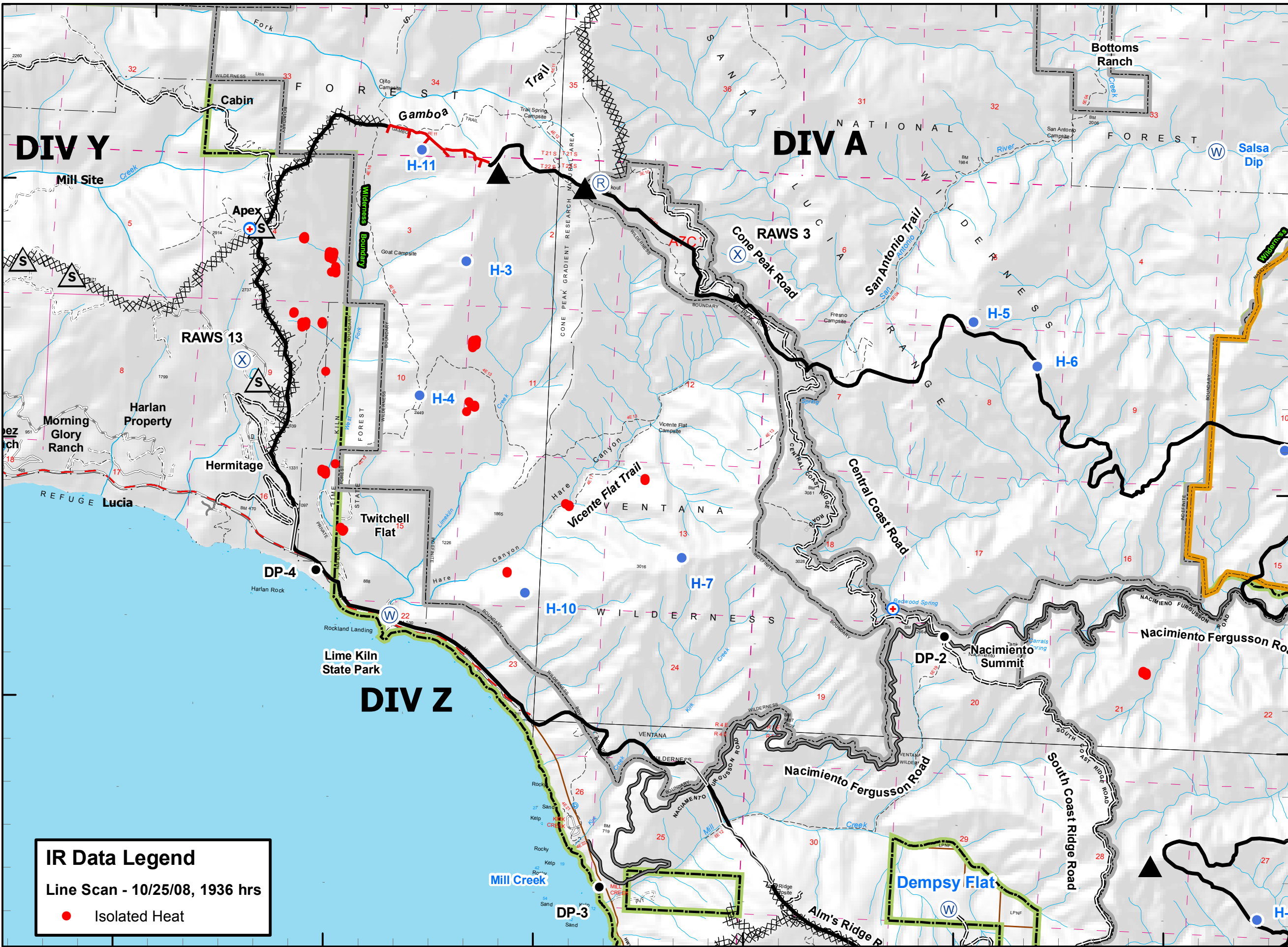


121°33'0"W 121°31'30"W 121°30'0"W 121°28'30"W 121°27'0"W 121°25'30"W



# Chalk Fire IR MAP

CA-LPF-002754  
October 26, 2008

Fire Perimeter Current as of 10/23/08, 1700 hrs.



### Legend

- Incident Command Post
- MediVac Site
- Staging Area
- Water Source
- Helibase
- Mobil Weather Unit
- Repeater
- Drop Point
- Helispot
- Safety Zone
- Retardant Pickup
- Road Hazard
- Division
- Branch
- Completed Dozer Line
- Proposed Dozer Line
- Uncontrolled Fire Edge
- Completed Line
- Hand Line
- Roads
- Trails
- Wilderness
- Forest Boundary
- Hunter Liggett Boundary

0 0.15 0.3 0.6  
Miles  
Scale 1:40,000



**IR Data Legend**  
Line Scan - 10/25/08, 1936 hrs  
 Isolated Heat

36°30'N  
36°13'0"N  
36°0'0"N

36°30'N  
36°13'0"N  
36°0'0"N

121°33'0"W 121°31'30"W 121°30'0"W 121°28'30"W 121°27'0"W 121°25'30"W