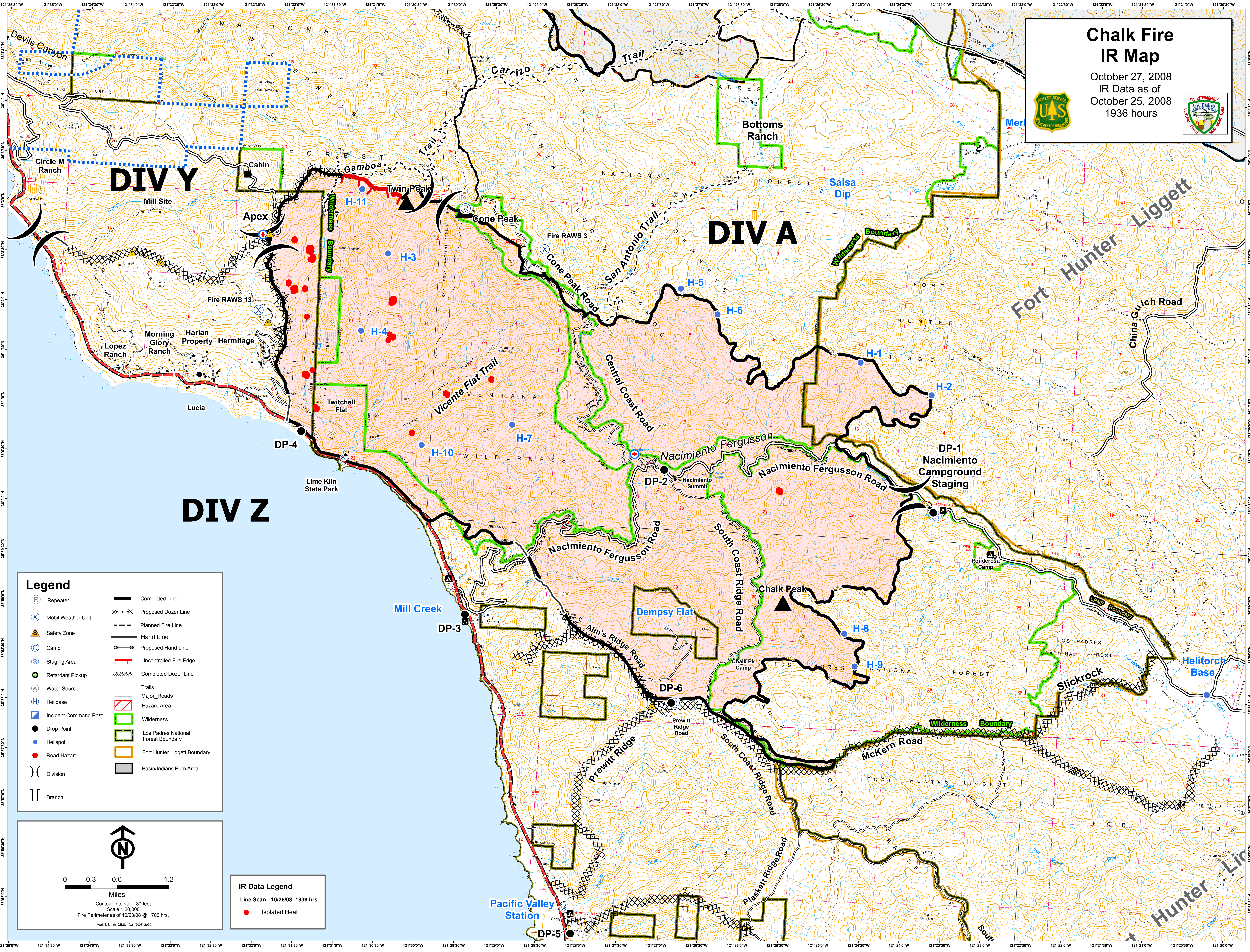
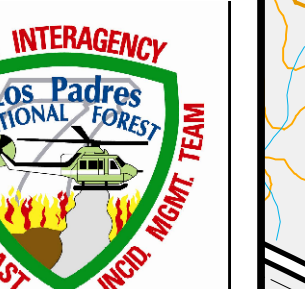
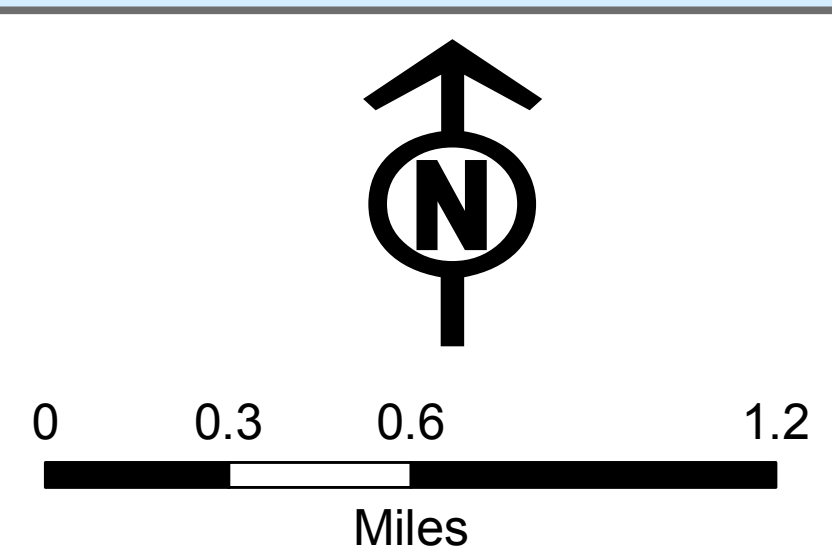


Chalk Fire IR Map

October 27, 2008
IR Data as of
October 25, 2008
1936 hours



- ### Legend
- | | |
|-----------------------|-------------------------------------|
| Repeater | Completed Line |
| Mobil Weather Unit | Proposed Dozer Line |
| Safety Zone | Planned Fire Line |
| Camp | Hand Line |
| Staging Area | Proposed Hand Line |
| Retardant Pickup | Uncontrolled Fire Edge |
| Water Source | Completed Dozer Line |
| Helibase | Trails |
| Incident Command Post | Major_Roads |
| Drop Point | Hazard Area |
| Helispot | Wilderness |
| Road Hazard | Los Padres National Forest Boundary |
| Division | Fort Hunter Liggett Boundary |
| Branch | Basin/Indians Burn Area |



IR Data Legend

Line Scan - 10/25/08, 1936 hrs

- Isolated Heat

121°35'0"W 121°34'0"W 121°33'0"W 121°32'0"W 121°31'0"W 121°30'0"W 121°29'0"W 121°28'0"W 121°27'0"W 121°26'0"W 121°25'0"W 121°24'0"W 121°23'0"W 121°22'0"W 121°21'0"W 121°20'0"W