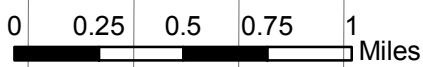


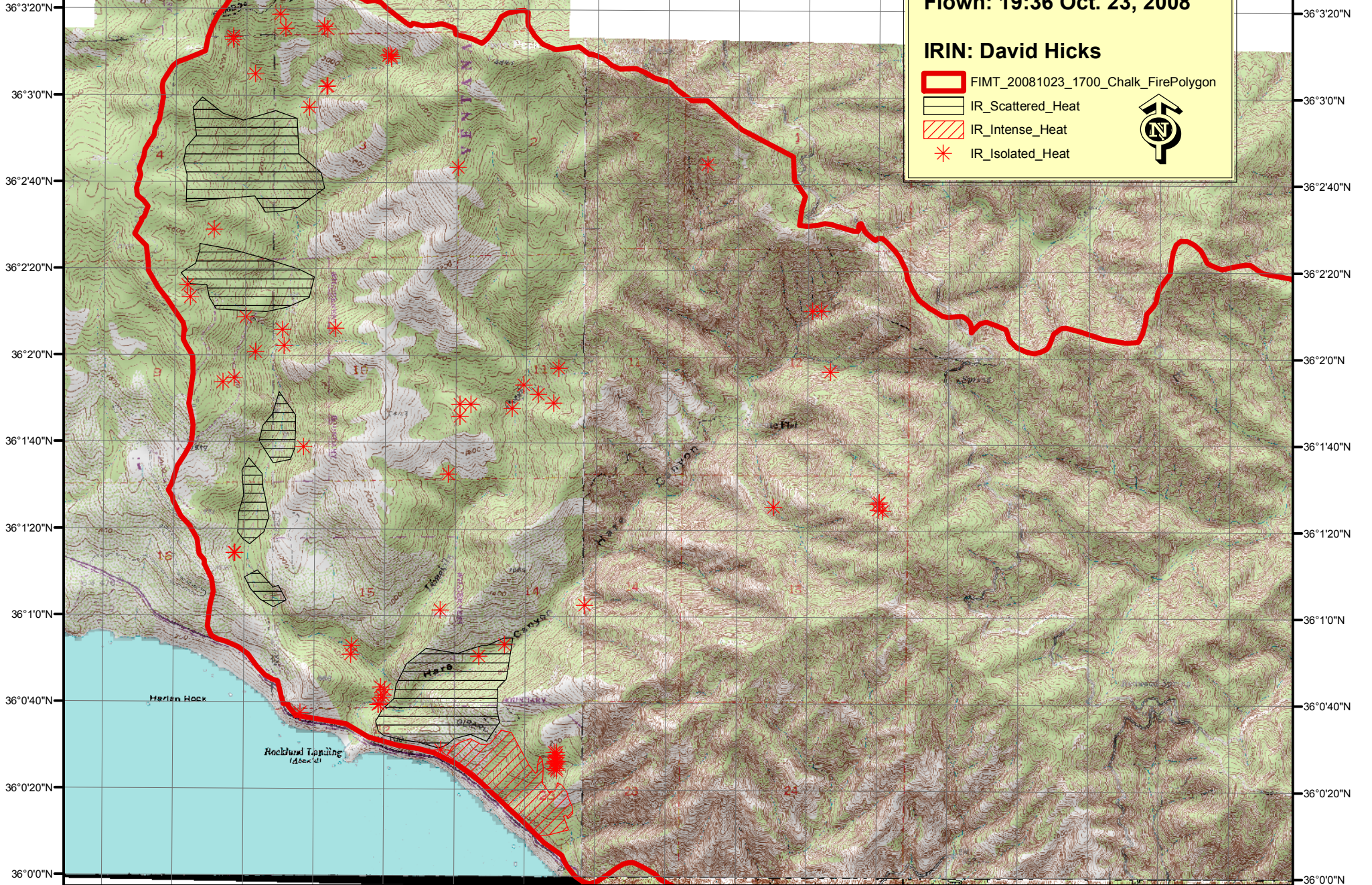
121°32'20"W 121°32'0"W 121°31'40"W 121°31'20"W 121°31'0"W 121°30'40"W 121°30'20"W 121°30'0"W 121°29'40"W 121°29'20"W 121°29'0"W 121°28'40"W 121°28'20"W 121°28'0"W 121°27'40"W 121°27'20"W 121°27'0"W



IR MAP CHALK FIRE
Flown: 19:36 Oct. 23, 2008

IRIN: David Hicks

- FIMT_20081023_1700_Chalk_FirePolygon
- IR_Scattered_Heat
- IR_Intense_Heat
- IR_Isolated_Heat



121°32'20"W 121°32'0"W 121°31'40"W 121°31'20"W 121°31'0"W 121°30'40"W 121°30'20"W 121°30'0"W 121°29'40"W 121°29'20"W 121°29'0"W 121°28'40"W 121°28'20"W 121°28'0"W 121°27'40"W 121°27'20"W 121°27'0"W