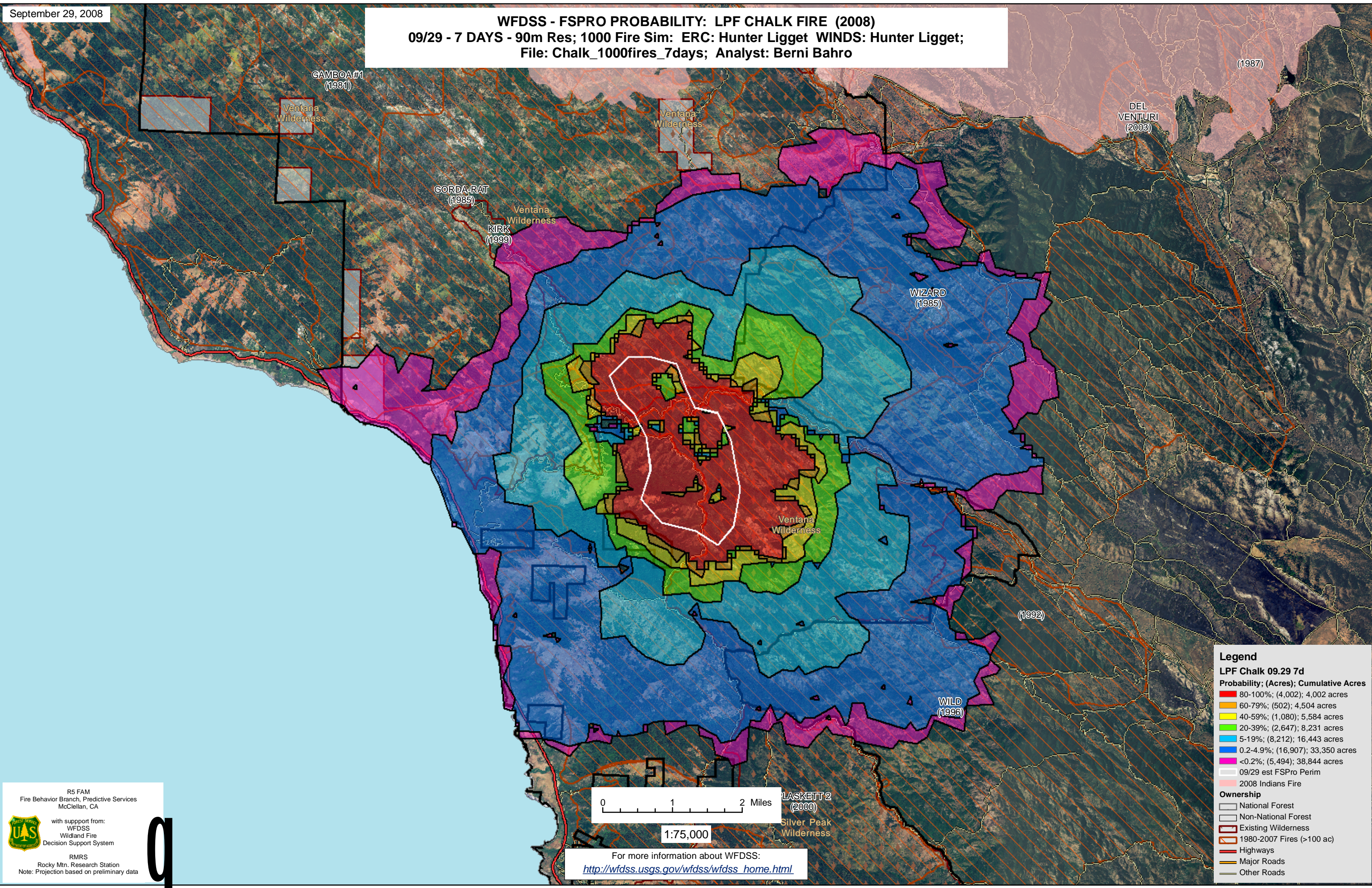


WFDSS - FSPRO PROBABILITY: LPF CHALK FIRE (2008)
09/29 - 7 DAYS - 90m Res; 1000 Fire Sim: ERC: Hunter Ligget WINDS: Hunter Ligget;
File: Chalk_1000fires_7days; Analyst: Berni Bahro



Legend

LPF Chalk 09.29 7d

Probability; (Acres); Cumulative Acres

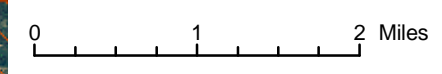
- 80-100%; (4,002); 4,002 acres
- 60-79%; (502); 4,504 acres
- 40-59%; (1,080); 5,584 acres
- 20-39%; (2,647); 8,231 acres
- 5-19%; (8,212); 16,443 acres
- 0.2-4.9%; (16,907); 33,350 acres
- <0.2%; (5,494); 38,844 acres

09/29 est FSPro Perim

2008 Indians Fire

Ownership

- National Forest
- Non-National Forest
- Existing Wilderness
- 1980-2007 Fires (>100 ac)
- Highways
- Major Roads
- Other Roads



1:75,000

For more information about WFDSS:
http://wfdss.usgs.gov/wfdss/wfdss_home.html

R5 FAM
Fire Behavior Branch, Predictive Services
McClellan, CA

with support from:
WFDSS
Wildland Fire
Decision Support System

RMRS
Rocky Mtn. Research Station
Note: Projection based on preliminary data