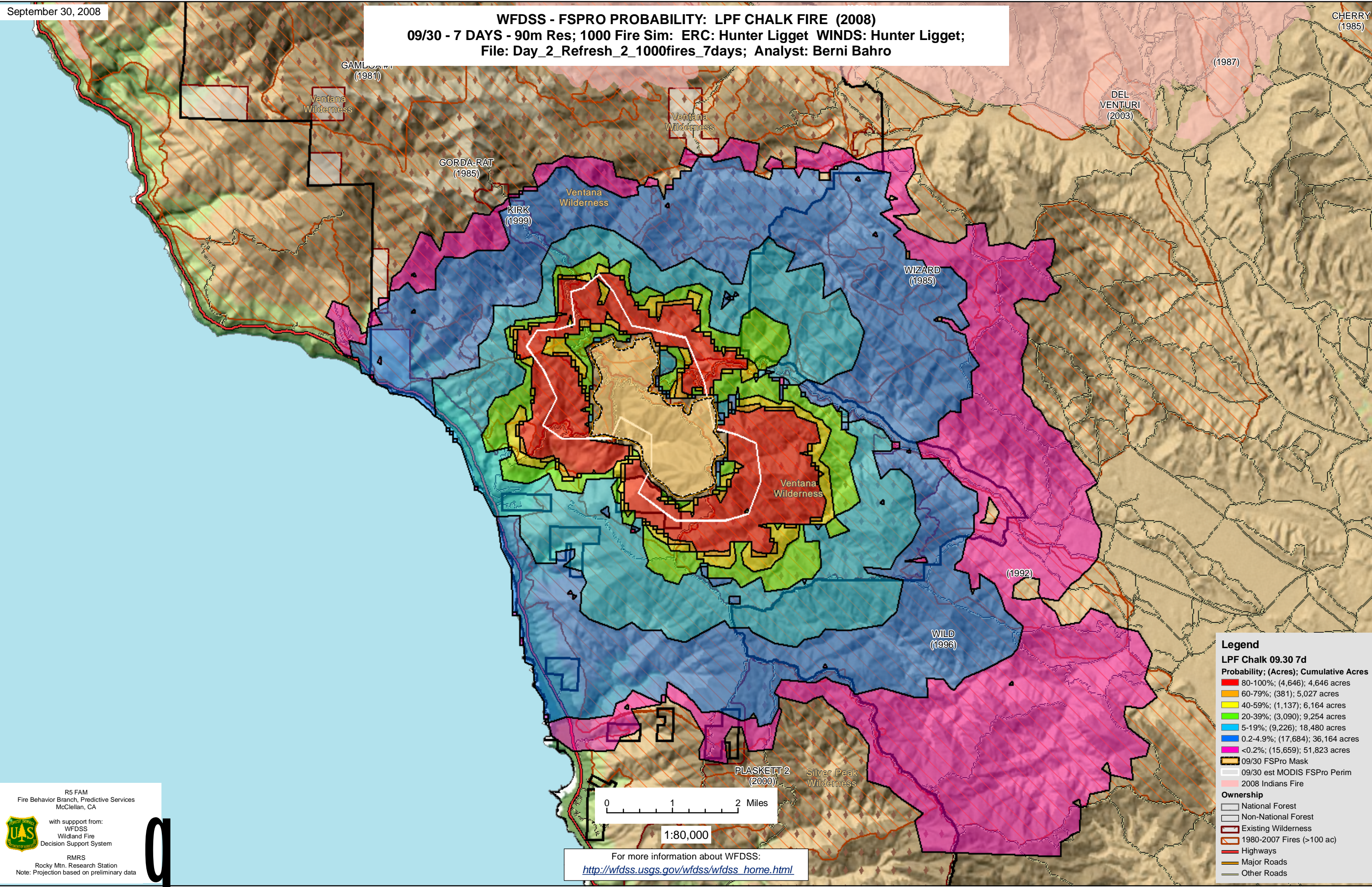


WFDSS - FSPRO PROBABILITY: LPF CHALK FIRE (2008)  
09/30 - 7 DAYS - 90m Res; 1000 Fire Sim: ERC: Hunter Ligget WINDS: Hunter Ligget;  
File: Day\_2\_Refresh\_2\_1000fires\_7days; Analyst: Berni Bahro



**Legend**

**LPF Chalk 09.30 7d**

**Probability; (Acres); Cumulative Acres**

- 80-100%; (4,646); 4,646 acres
- 60-79%; (381); 5,027 acres
- 40-59%; (1,137); 6,164 acres
- 20-39%; (3,090); 9,254 acres
- 5-19%; (9,226); 18,480 acres
- 0.2-4.9%; (17,684); 36,164 acres
- <0.2%; (15,659); 51,823 acres

- 09/30 FSPRO Mask
- 09/30 est MODIS FSPRO Perim
- 2008 Indians Fire

**Ownership**

- National Forest
- Non-National Forest
- Existing Wilderness
- 1980-2007 Fires (>100 ac)
- Highways
- Major Roads
- Other Roads

R5 FAM  
Fire Behavior Branch, Predictive Services  
McClellan, CA

with support from:  
WFDSS  
Wildland Fire  
Decision Support System

RMRS  
Rocky Mtn. Research Station  
Note: Projection based on preliminary data

For more information about WFDSS:  
[http://wfdss.usgs.gov/wfdss/wfdss\\_home.html](http://wfdss.usgs.gov/wfdss/wfdss_home.html)