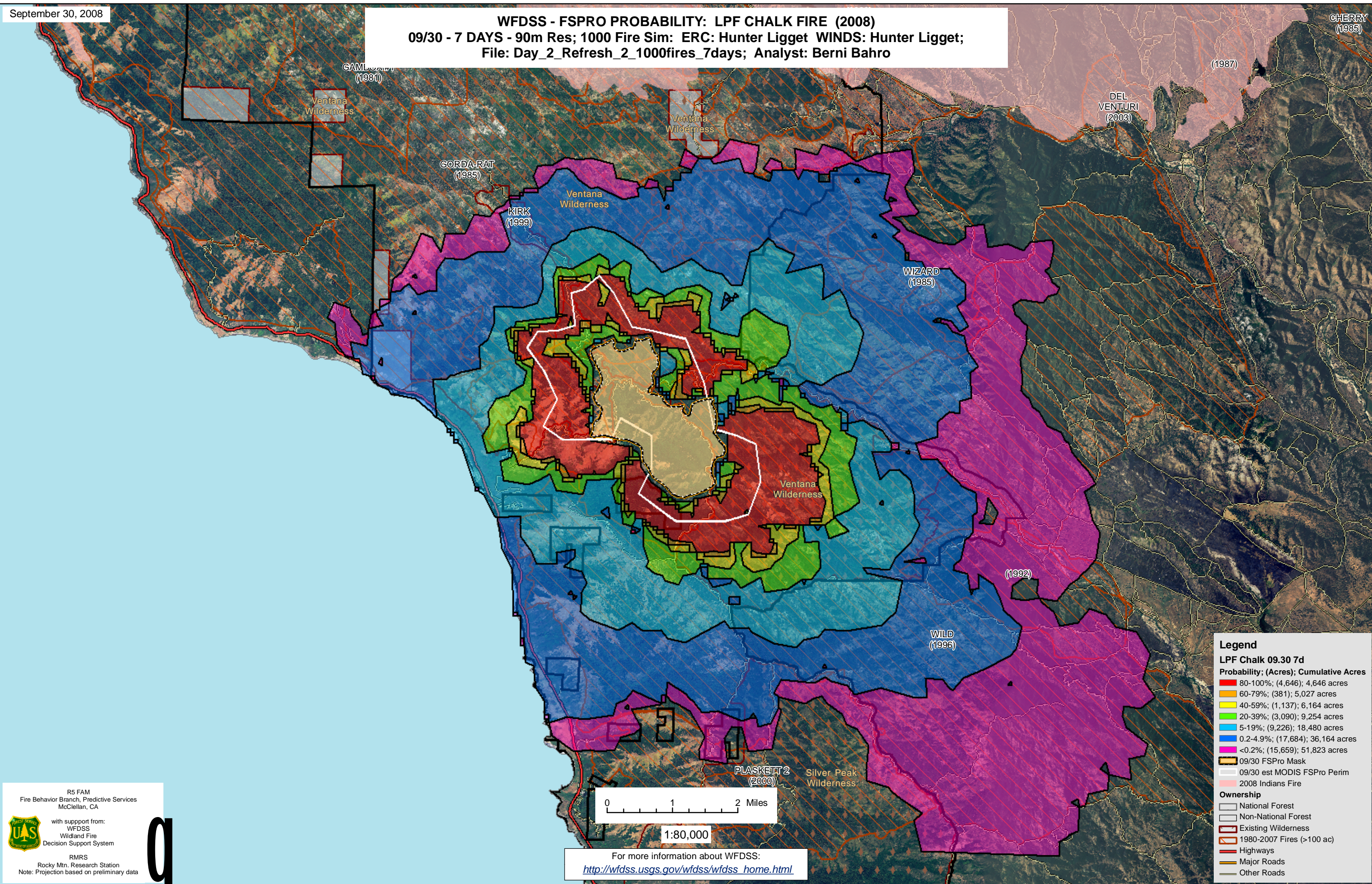


WFDSS - FSPRO PROBABILITY: LPF CHALK FIRE (2008)
09/30 - 7 DAYS - 90m Res; 1000 Fire Sim: ERC: Hunter Ligget WINDS: Hunter Ligget;
File: Day_2_Refresh_2_1000fires_7days; Analyst: Berni Bahro



Legend

LPF Chalk 09.30 7d

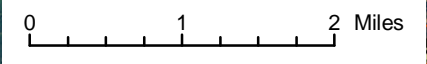
Probability; (Acres); Cumulative Acres

- 80-100%; (4,646); 4,646 acres
- 60-79%; (381); 5,027 acres
- 40-59%; (1,137); 6,164 acres
- 20-39%; (3,090); 9,254 acres
- 5-19%; (9,226); 18,480 acres
- 0.2-4.9%; (17,684); 36,164 acres
- <0.2%; (15,659); 51,823 acres

- 09/30 FSPRO Mask
- 09/30 est MODIS FSPRO Perim
- 2008 Indians Fire

Ownership

- National Forest
- Non-National Forest
- Existing Wilderness
- 1980-2007 Fires (>100 ac)
- Highways
- Major Roads
- Other Roads



1:80,000

For more information about WFDSS:
http://wfdss.usgs.gov/wfdss/wfdss_home.html

R5 FAM
Fire Behavior Branch, Predictive Services
McClellan, CA

with support from:
WFDSS
Wildland Fire
Decision Support System

RMRS
Rocky Mtn. Research Station
Note: Projection based on preliminary data