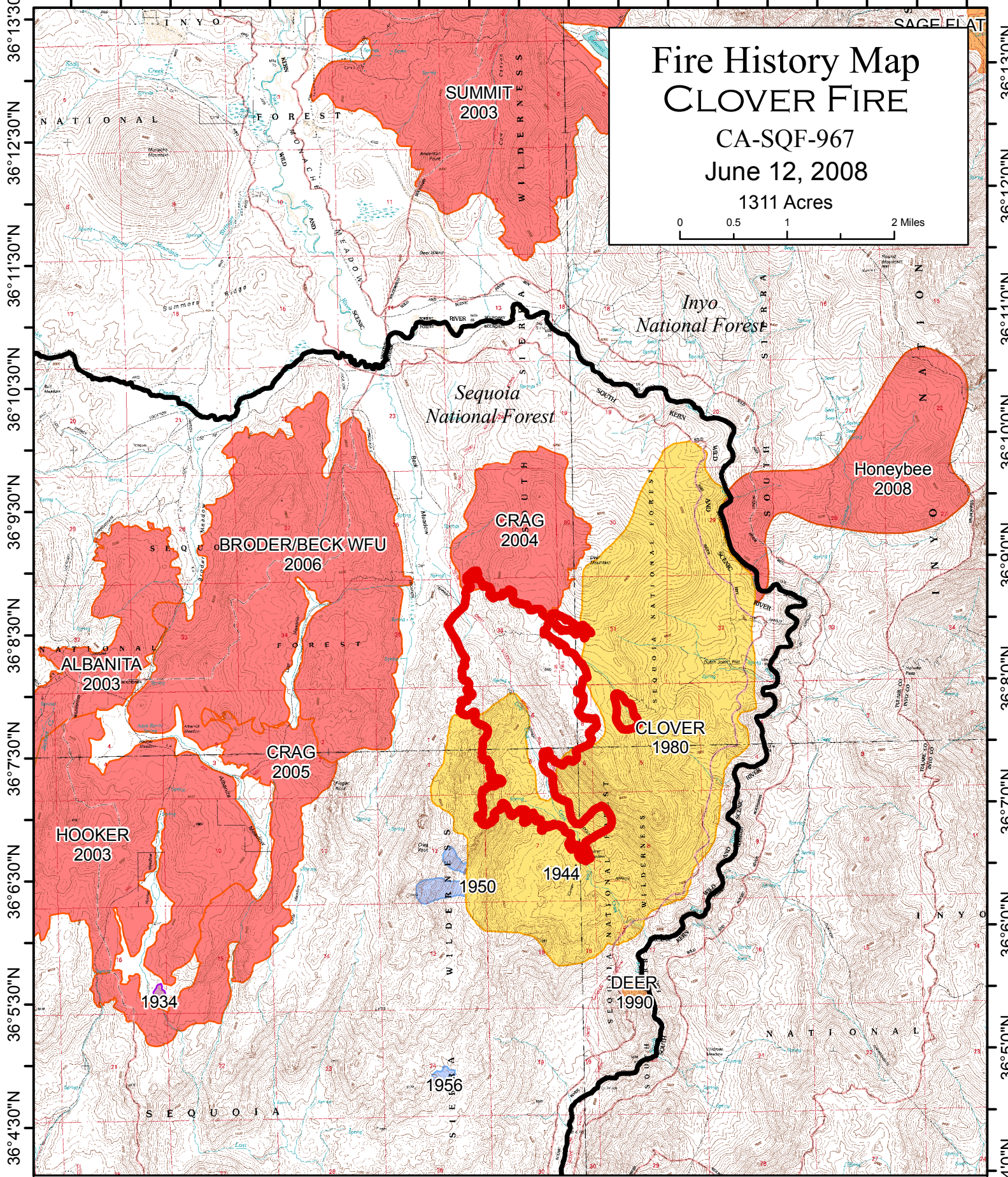


118°12'0"W 118°10'30"W 118°9'30"W 118°8'30"W 118°7'30"W 118°6'30"W 118°5'30"W 118°4'30"W 118°3'30"W



Fire History Map

CLOVER FIRE

CA-SQF-967
June 12, 2008
1311 Acres

Fire History By Decade

	1914 - 1949		1980 - 1989
	1950 - 1959		1990 - 1999
	1970 - 1979		2000 - 2008

Fire Perimeter as of 6/11/2008 1200 Hrs



Kern River Ranger District
Sequoia National Forest

118°

36°4'30"N

36°5'30"N

36°6'30"N

36°7'30"N

36°8'30"N

36°9'30"N

36°10'30"N

36°11'30"N

36°12'30"N

36°13'30"N

118°

36°4'30"N

36°5'30"N

36°6'30"N

36°7'30"N

36°8'30"N

36°9'30"N

36°10'30"N

36°11'30"N

36°12'30"N

36°13'30"N