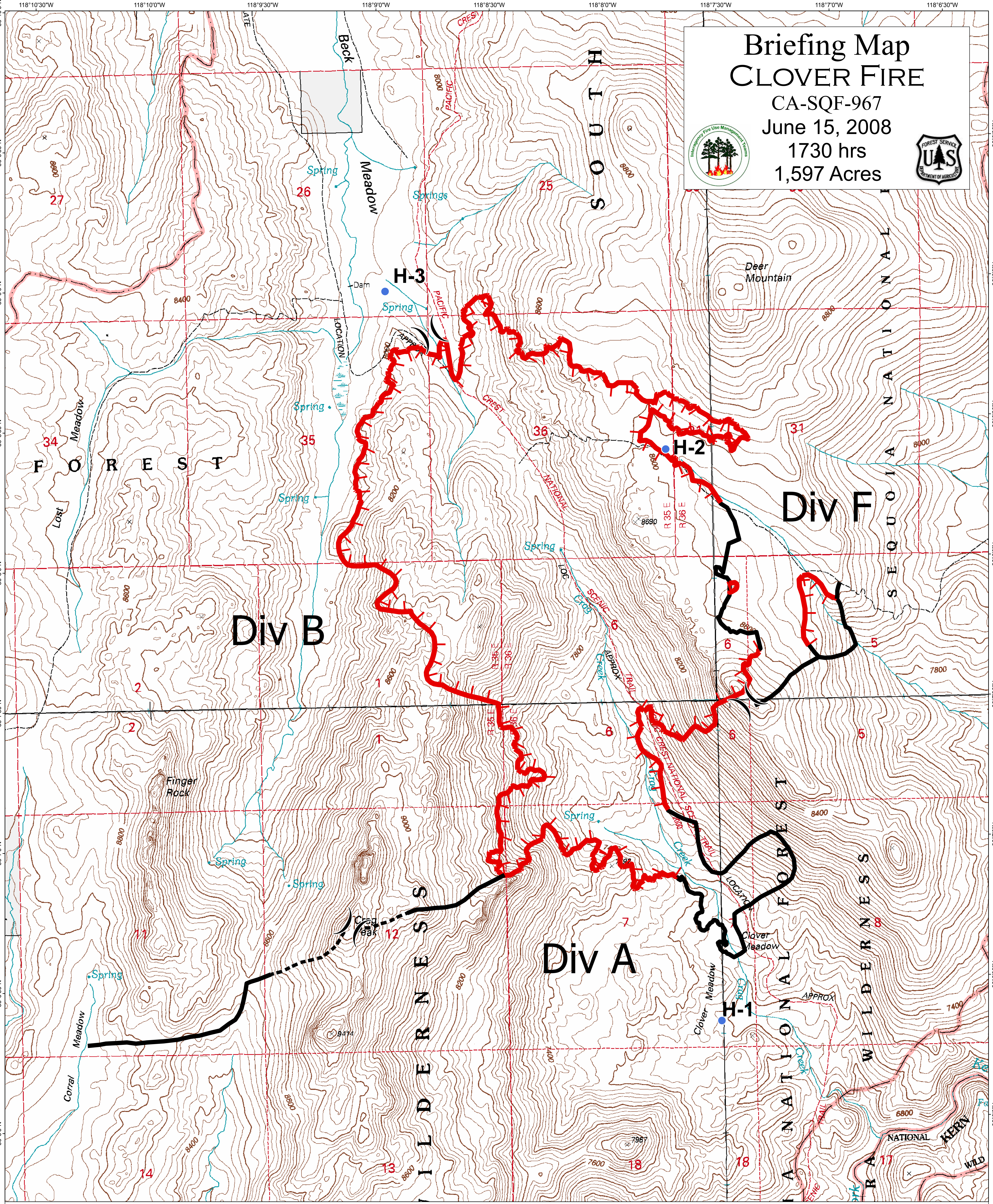
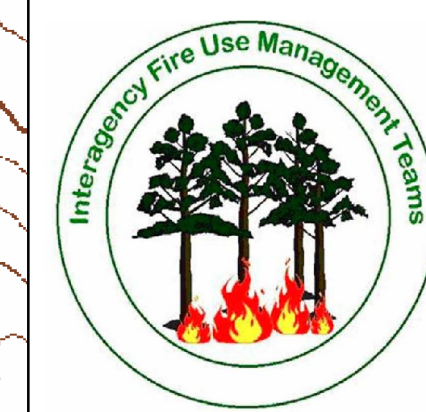


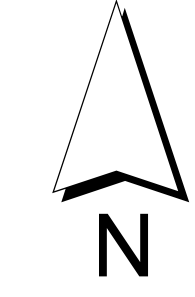
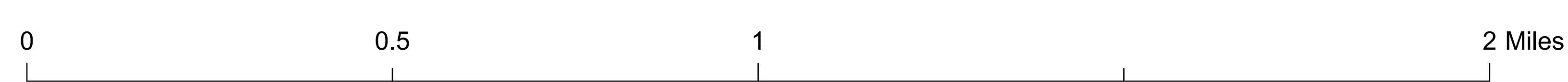
Briefing Map CLOVER FIRE

CA-SQF-967
June 15, 2008
1730 hrs
1,597 Acres



- () Division
- Helispot
- ▬ Uncontrolled Fire Edge
- ▬ Completed Line
- - - Planned Fire Line

Fire Perimeter as of 6/15/08 1030hrs



Kern River Ranger District
Sequoia National Forest