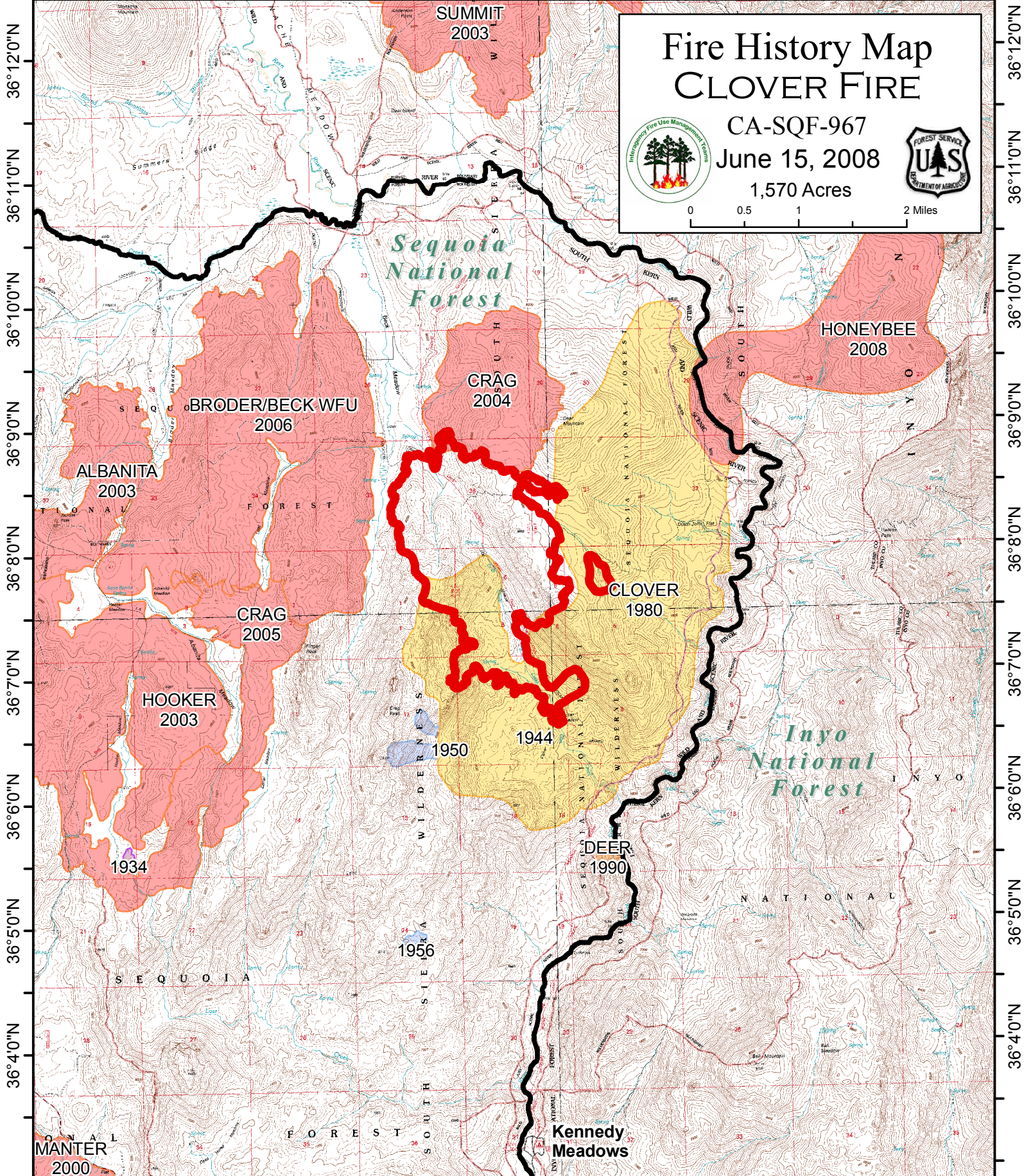




118°12'0"W 118°10'30"W 118°9'30"W 118°8'30"W 118°7'30"W 118°6'30"W 118°5'30"W 118°4'30"W 118°3'30"W










Fire History Map CLOVER FIRE

CA-SQF-967
June 15, 2008
1,570 Acres

Fires by Decade

 Fire Perimeter as of 6/14/2008 1100 Hrs	 1914 - 1949	 1970 - 1979	 1990 - 1999
	 1950 - 1959	 1980 - 1989	 2000 - 2008


 Kern River Ranger District
 Sequoia National Forest