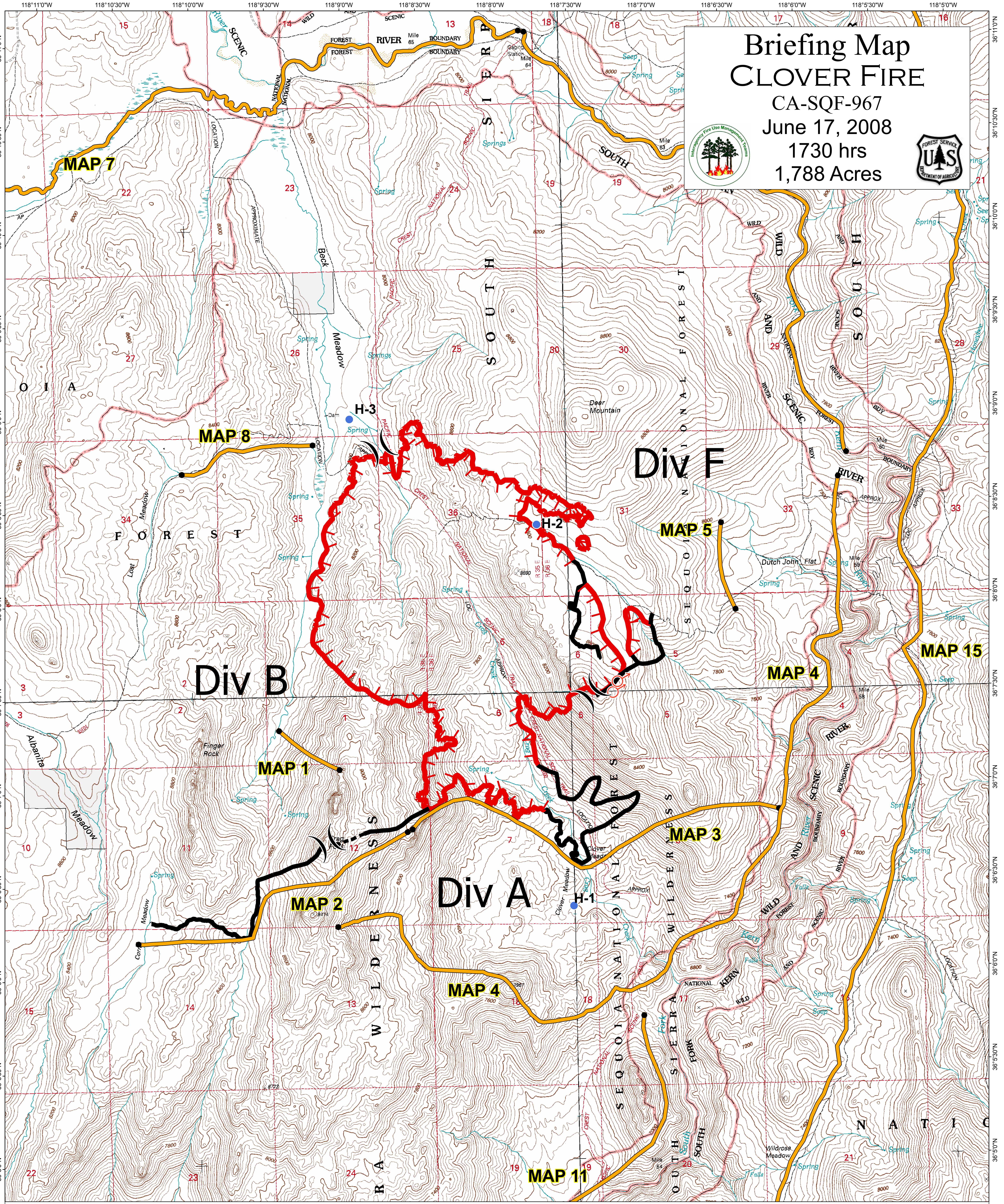
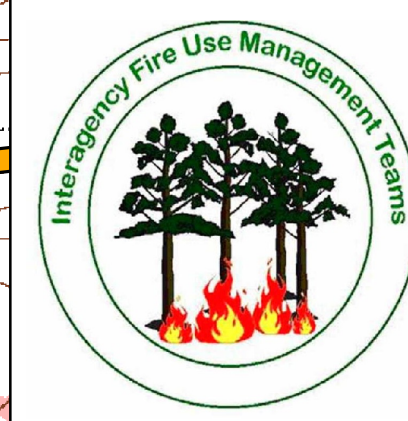


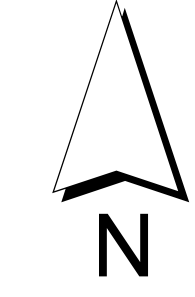
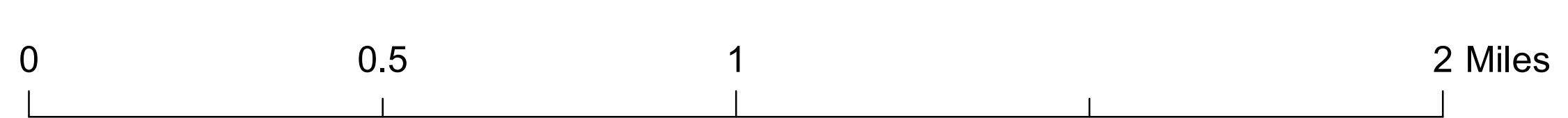
Briefing Map CLOVER FIRE

CA-SQF-967
June 17, 2008
1730 hrs
1,788 Acres



- () Division
- Helispot
- Uncontrolled Fire Edge
- Completed Line
- - - Planned Fire Line
- ⊕ Spot Fire

Fire Perimeter as of 6/17/08 1030hrs



Kern River Ranger District
Sequoia National Forest