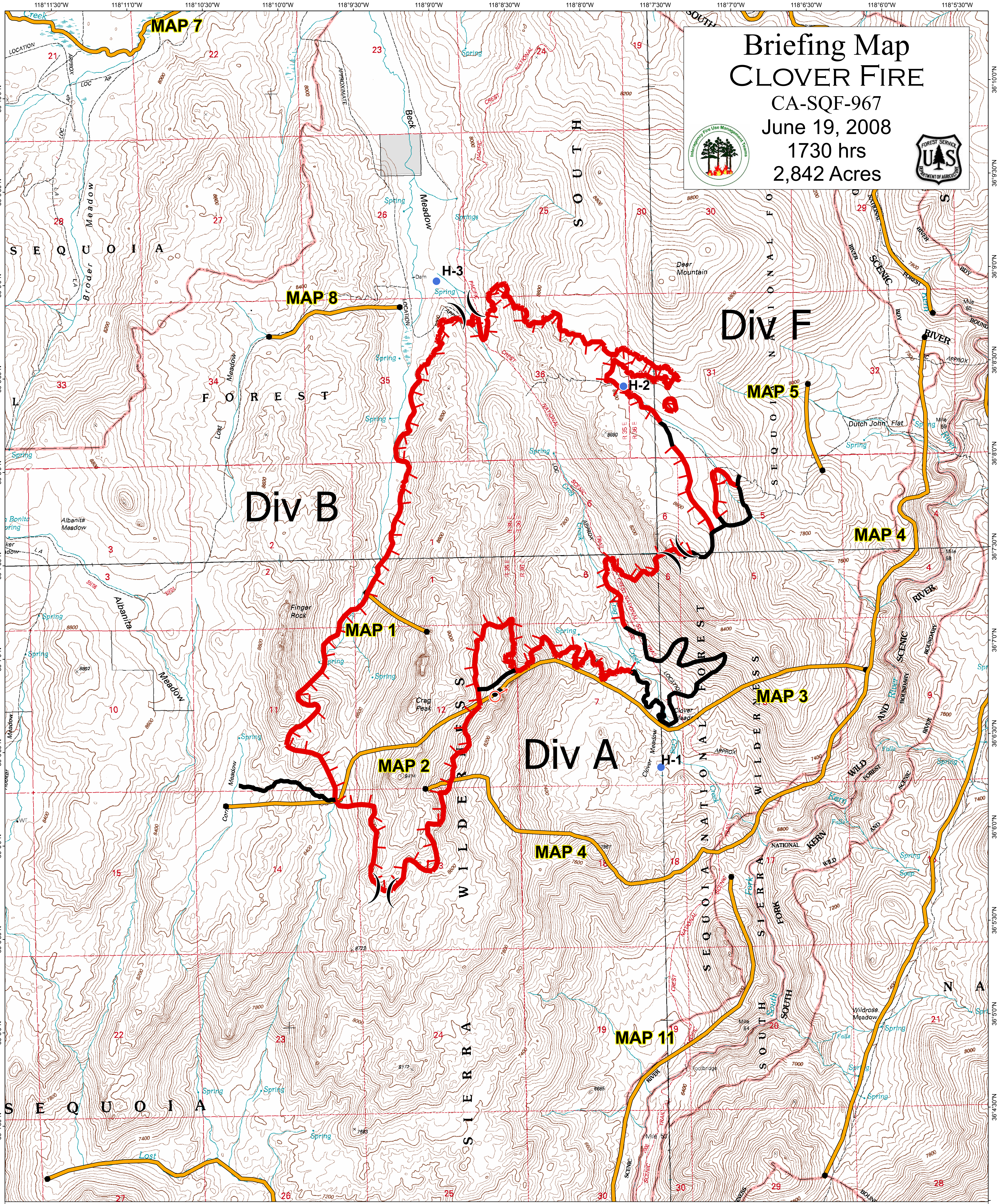
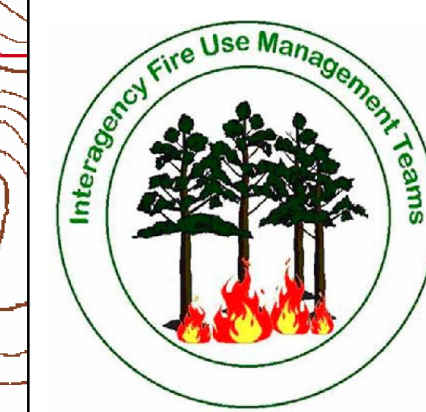


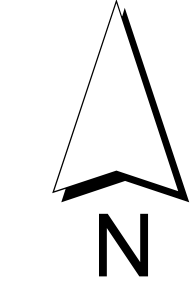
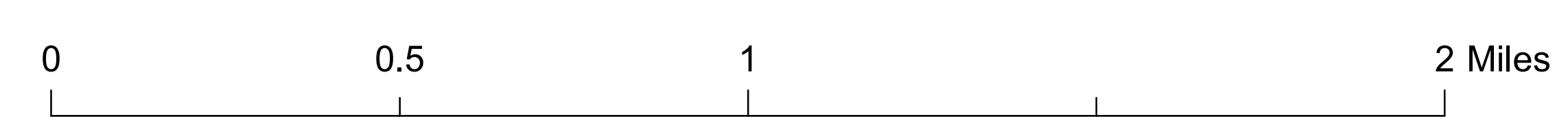
Briefing Map CLOVER FIRE

CA-SQF-967
June 19, 2008
1730 hrs
2,842 Acres



- () Division
- ♂ Spot Fire
- Helispot
- Uncontrolled Fire Edge
- Completed Line

Fire Perimeter as of 6/19/08 0830hrs



Kern River Ranger District
Sequoia National Forest