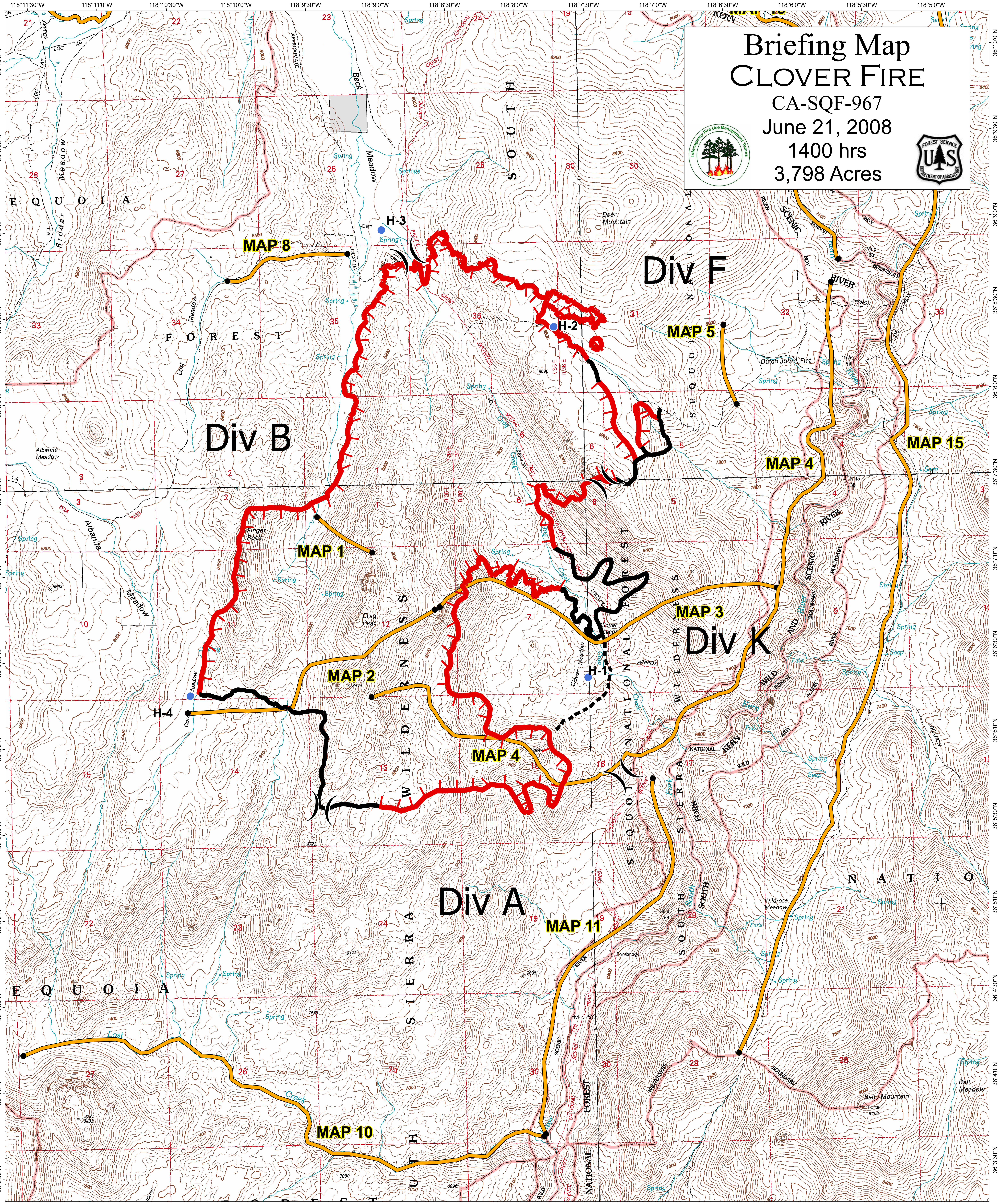


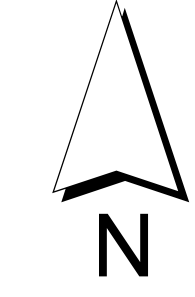
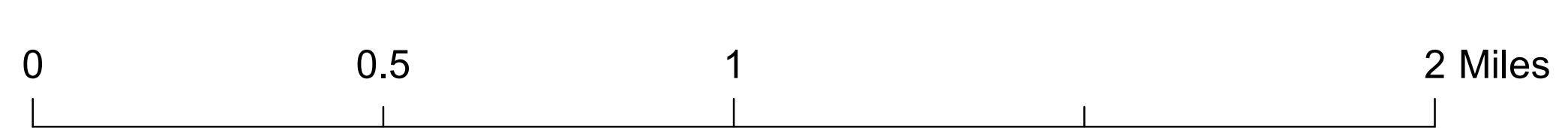
Briefing Map CLOVER FIRE

CA-SQF-967
June 21, 2008
1400 hrs
3,798 Acres



- () Division
- ♂ Spot Fire
- Helispot
- Uncontrolled Fire Edge
- Completed Line
- - - Planned Fire Line

Fire Perimeter as of 6/20/08 1900hrs



Kern River Ranger District
Sequoia National Forest