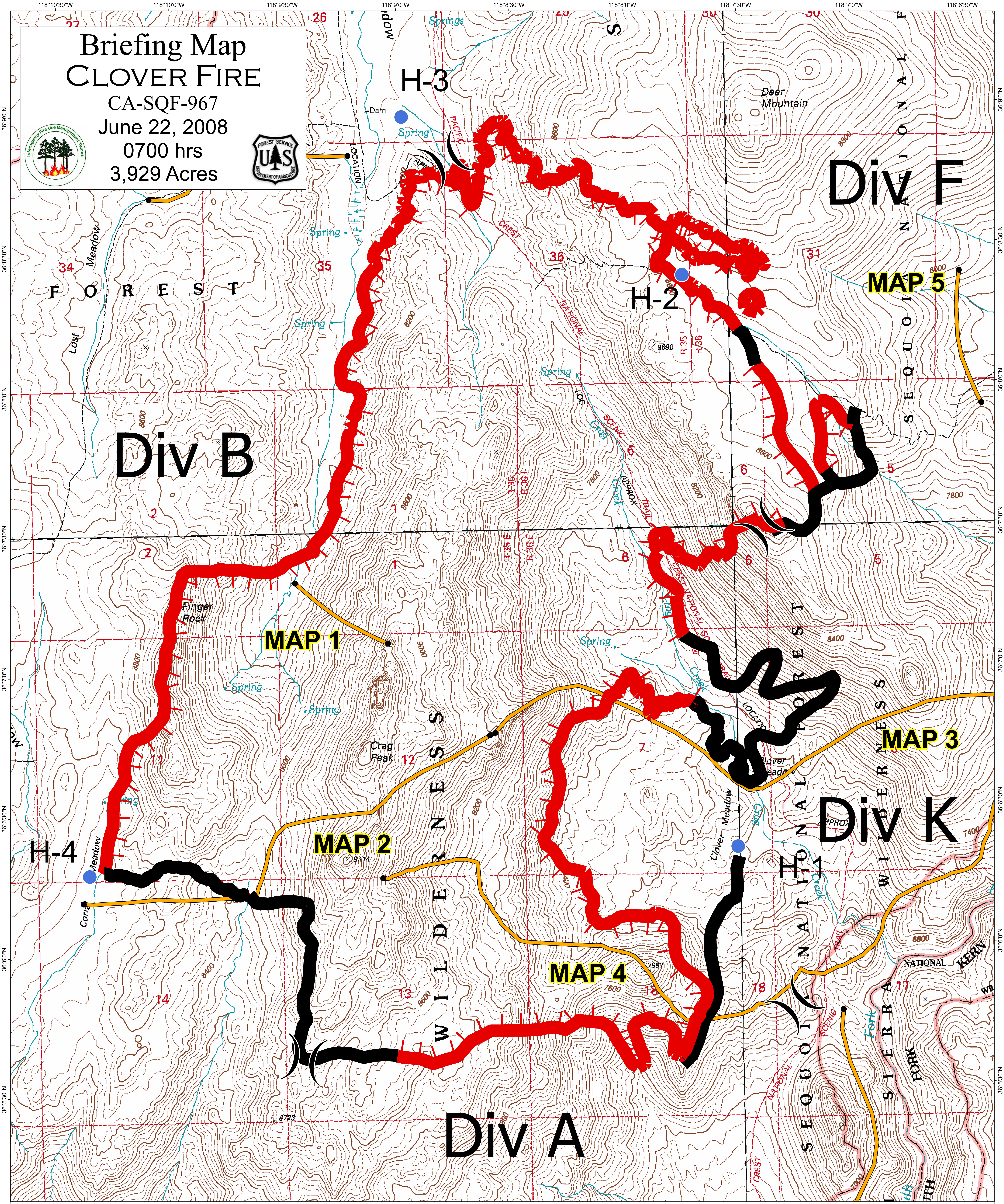


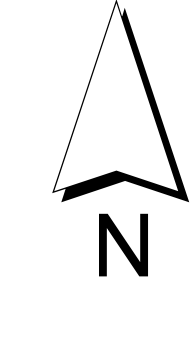
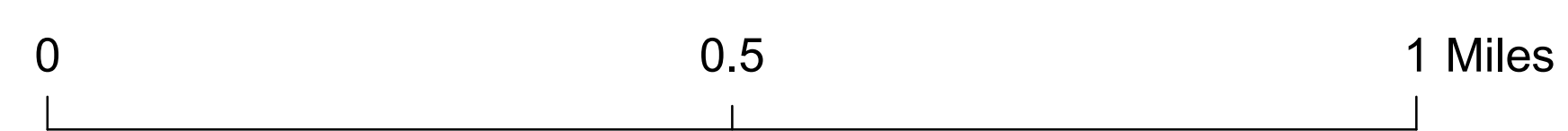
# Briefing Map CLOVER FIRE

CA-SQF-967  
June 22, 2008  
0700 hrs  
3,929 Acres



- ( ) Division
- ♂ Spot Fire
- Helispot
- ▬ Uncontrolled Fire Edge
- ▬ Completed Line
- - - Planned Fire Line

Fire Perimeter as of 6/21/08 1630hrs



Kern River Ranger District  
Sequoia National Forest