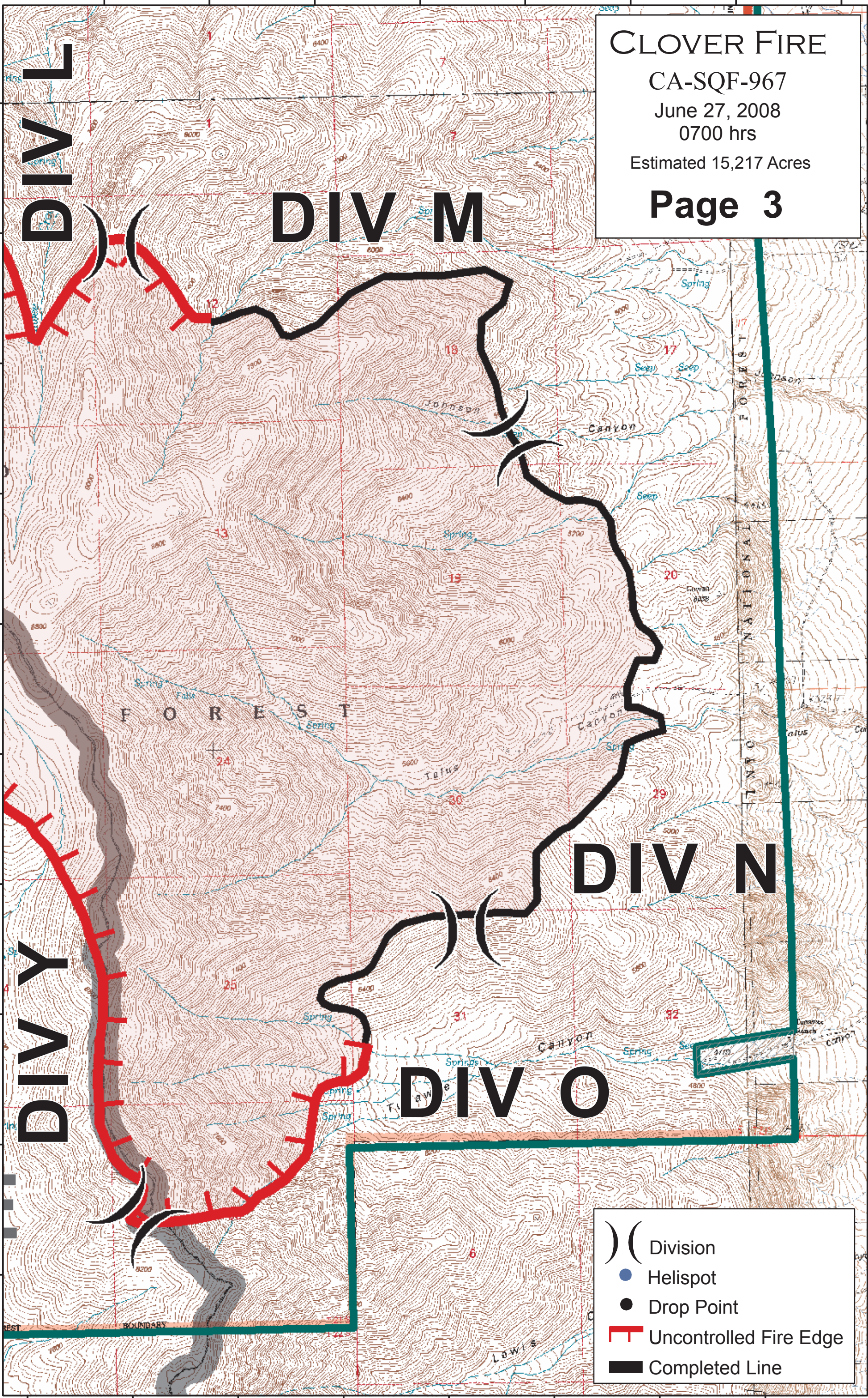


118°3'0"W 118°2'30"W 118°2'0"W 118°1'30"W 118°1'0"W 118°0'30"W 118°0'0"W 117°59'30"W

36°7'30"N
36°7'0"N
36°6'30"N
36°6'0"N
36°5'30"N
36°5'0"N
36°4'30"N
36°4'0"N
36°3'30"N
36°3'0"N

36°7'30"N
36°7'0"N
36°6'30"N
36°6'0"N
36°5'30"N
36°5'0"N
36°4'30"N
36°4'0"N
36°3'30"N
36°3'0"N

CLOVER FIRE
CA-SQF-967
June 27, 2008
0700 hrs
Estimated 15,217 Acres
Page 3



) (Division
● Helispot
● Drop Point
┌ Uncontrolled Fire Edge
▬ Completed Line

118°3'30"W 118°3'0"W 118°2'30"W 118°2'0"W 118°1'30"W 118°1'0"W 118°0'30"W 118°0'0"W