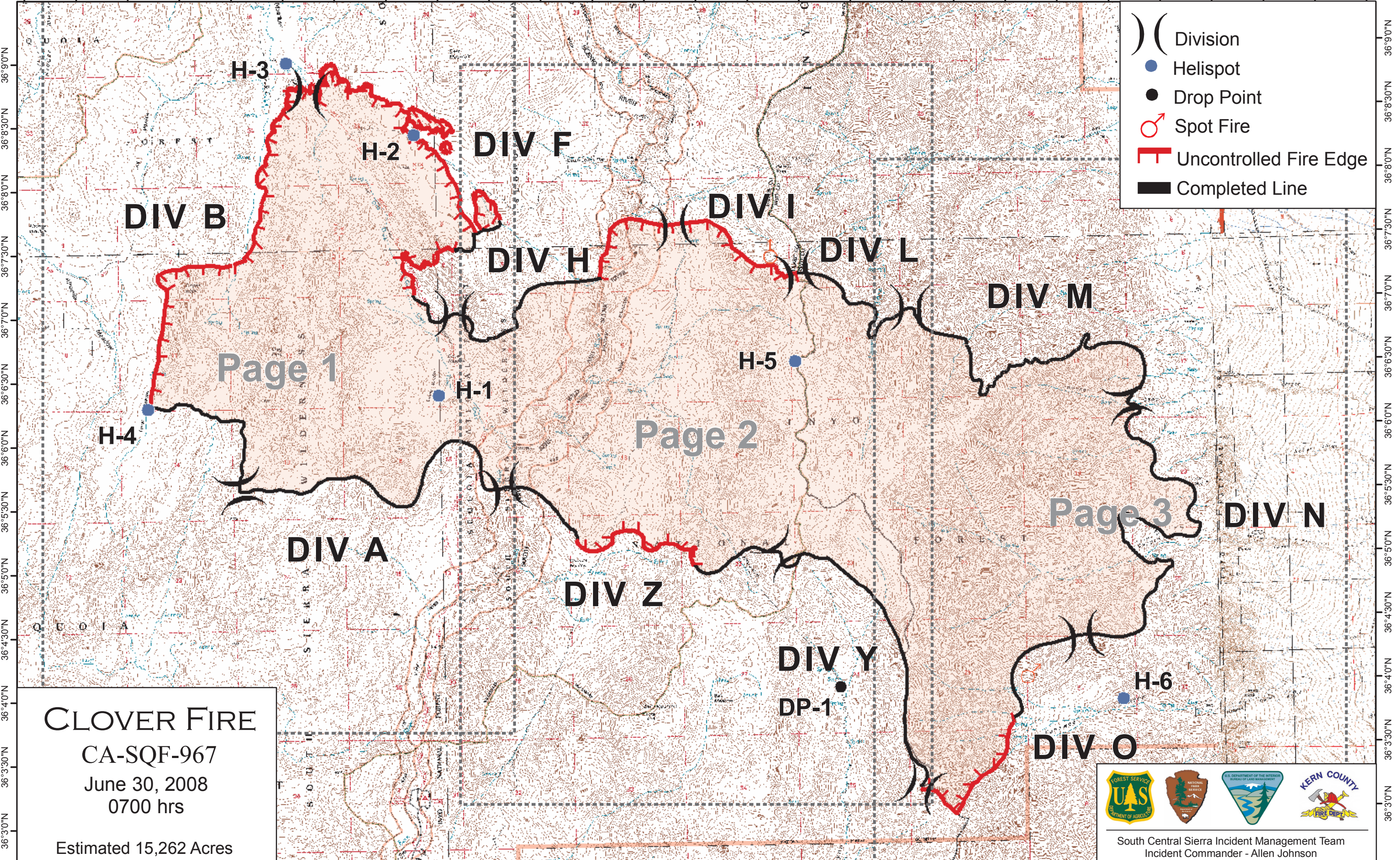


118°11'0"W 118°10'0"W 118°9'30"W 118°9'0"W 118°8'30"W 118°8'0"W 118°7'30"W 118°7'0"W 118°6'30"W 118°6'0"W 118°5'30"W 118°5'0"W 118°4'30"W 118°4'0"W 118°3'30"W 118°3'0"W 118°2'30"W 118°2'0"W 118°1'30"W 118°1'0"W 118°0'30"W 118°0'0"W 117°59'30"W 117°58'30"W



- Division
- Helispot
- Drop Point
- Spot Fire
- Uncontrolled Fire Edge
- Completed Line

CLOVER FIRE
 CA-SQF-967
 June 30, 2008
 0700 hrs
 Estimated 15,262 Acres

South Central Sierra Incident Management Team
 Incident Commander - Allen Johnson

118°11'0"W 118°10'0"W 118°9'30"W 118°9'0"W 118°8'30"W 118°8'0"W 118°7'30"W 118°7'0"W 118°6'30"W 118°6'0"W 118°5'30"W 118°5'0"W 118°4'30"W 118°4'0"W 118°3'30"W 118°3'0"W 118°2'30"W 118°2'0"W 118°1'30"W 118°1'0"W 118°0'30"W 118°0'0"W 117°59'0"W