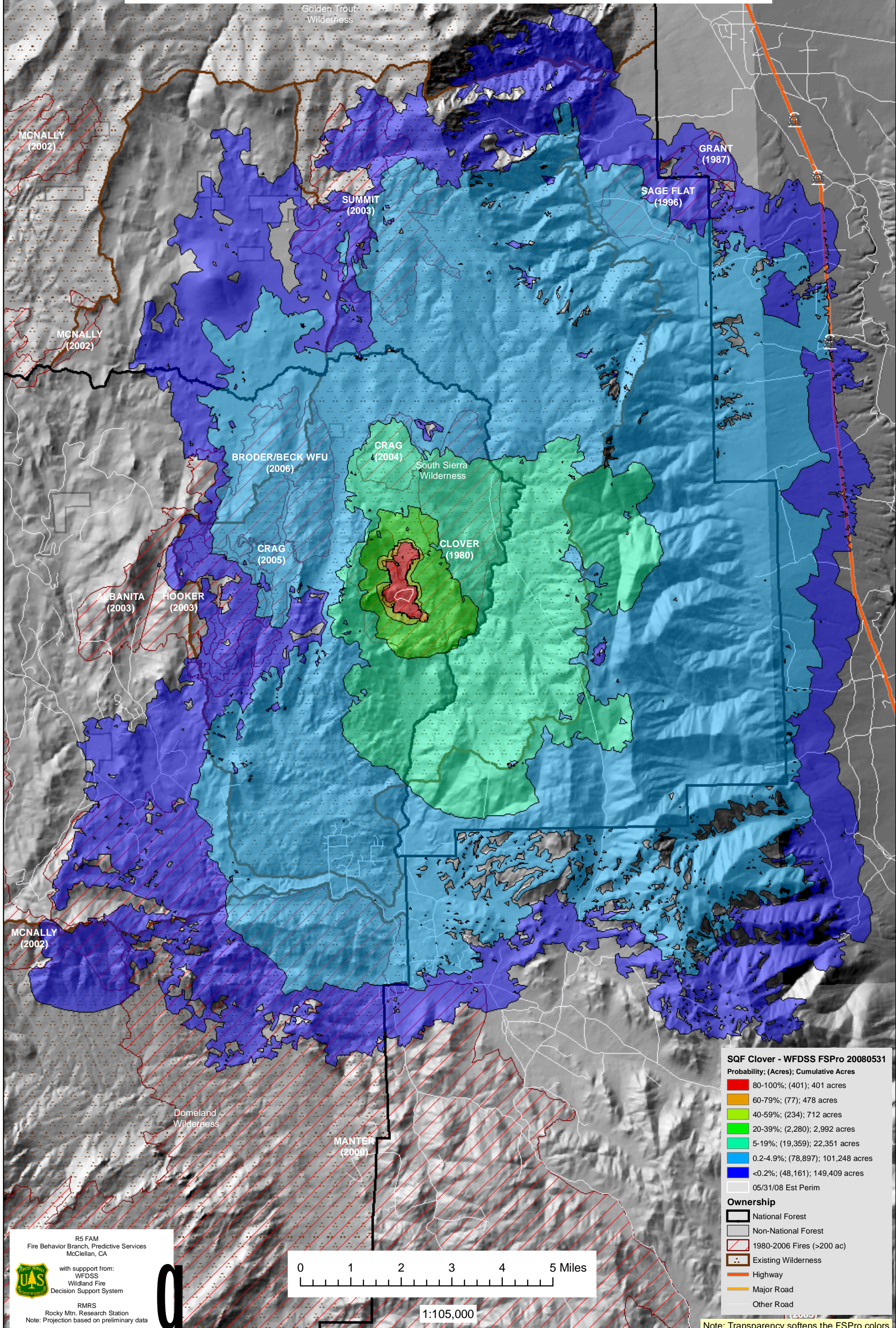


June 2, 2008

WFDSS - FSPRO PROBABILITY: SQF Clover (2008)

14 DAYS (05/31 - 06/13) - 30m Res, 2000 Fire Sim: ERC: Blackrock; WINDS: Blackrock
File: Clover_30meters_AMR; Analyst: Berni Bahro



SQF Clover - WFDSS FSPRO 20080531

Probability; (Acres); Cumulative Acres

80-100%	(401); 401 acres
60-79%	(77); 478 acres
40-59%	(234); 712 acres
20-39%	(2,280); 2,992 acres
5-19%	(19,359); 22,351 acres
0.2-4.9%	(78,897); 101,248 acres
<0.2%	(48,161); 149,409 acres
	05/31/08 Est Perim

- Ownership**
- National Forest
 - Non-National Forest
 - 1980-2006 Fires (>200 ac)
 - Existing Wilderness
 - Highway
 - Major Road
 - Other Road

R5 FAM
Fire Behavior Branch, Predictive Services
McClellan, CA

with support from:
WFDSS
Wildland Fire
Decision Support System

RMRS
Rocky Mtn. Research Station
Note: Projection based on preliminary data



1:105,000

Note: Transparency softens the FSPRO colors