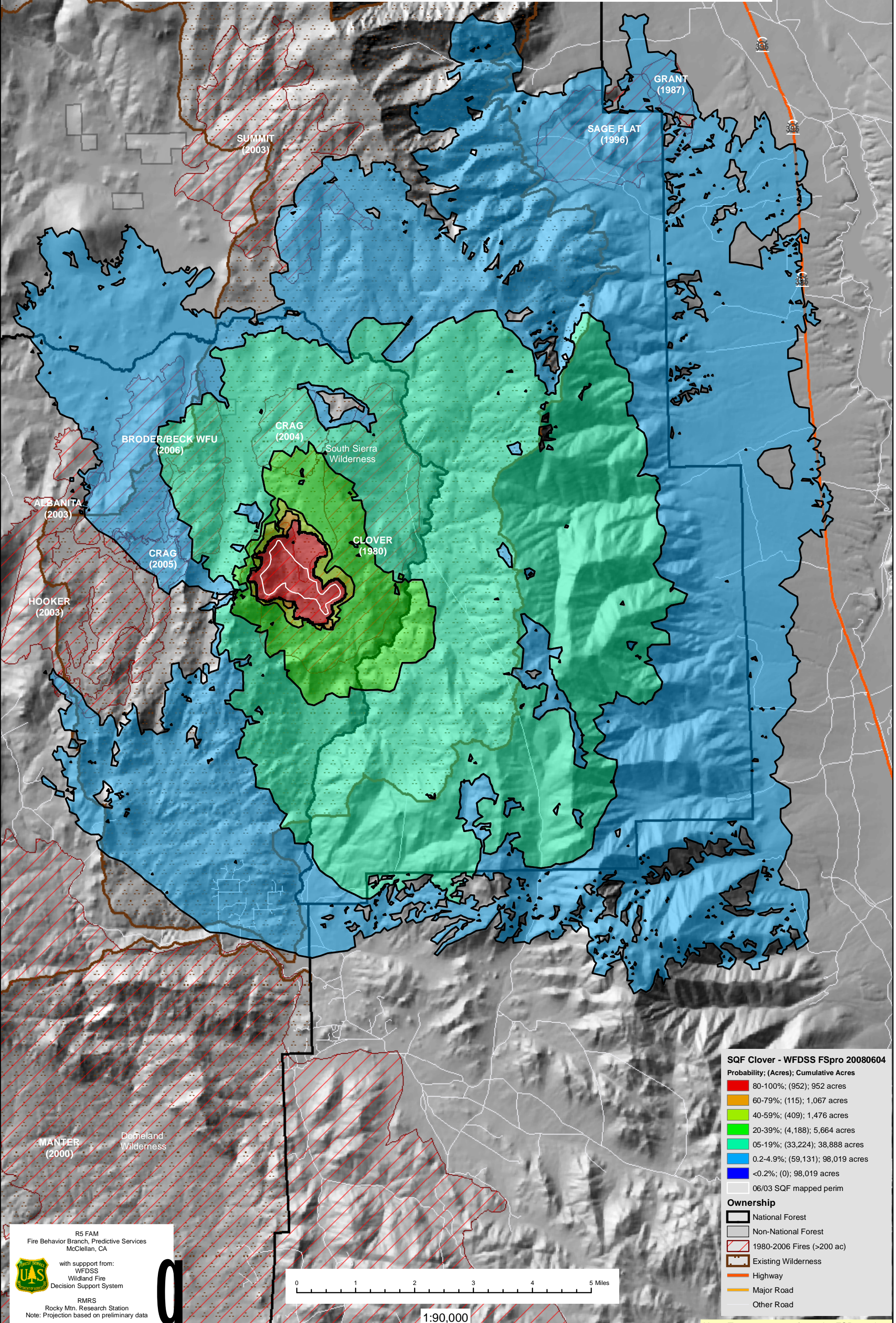


June 5, 2008

WFDSS - FSPRO PROBABILITY: SQF Clover (2008)  
14 DAYS (06/04 - 06/17) - 30m Res, 100 Fire Sim: ERC: Blackrock; WINDS: Blackrock  
File: Clover\_AMR\_6-3perimeter; Analyst: Phil Bowden



**SQF Clover - WFDSS FSpro 20080604**

Probability; (Acres); Cumulative Acres

80-100%	(952); 952 acres
60-79%	(115); 1,067 acres
40-59%	(409); 1,476 acres
20-39%	(4,188); 5,664 acres
05-19%	(33,224); 38,888 acres
0.2-4.9%	(59,131); 98,019 acres
<0.2%	(0); 98,019 acres
06/03 SQF mapped perim	

**Ownership**

[Black outline]	National Forest
[Grey outline]	Non-National Forest
[Red hatched]	1980-2006 Fires (>200 ac)
[Brown hatched]	Existing Wilderness
[Orange line]	Highway
[Yellow line]	Major Road
[Thin grey line]	Other Road

R5 FAM  
Fire Behavior Branch, Predictive Services  
McClellan, CA

with support from:  
WFDSS  
Wildland Fire  
Decision Support System

RMRS  
Rocky Mtn. Research Station  
Note: Projection based on preliminary data



1:90,000

Note: Transparency softens the FSPro colors