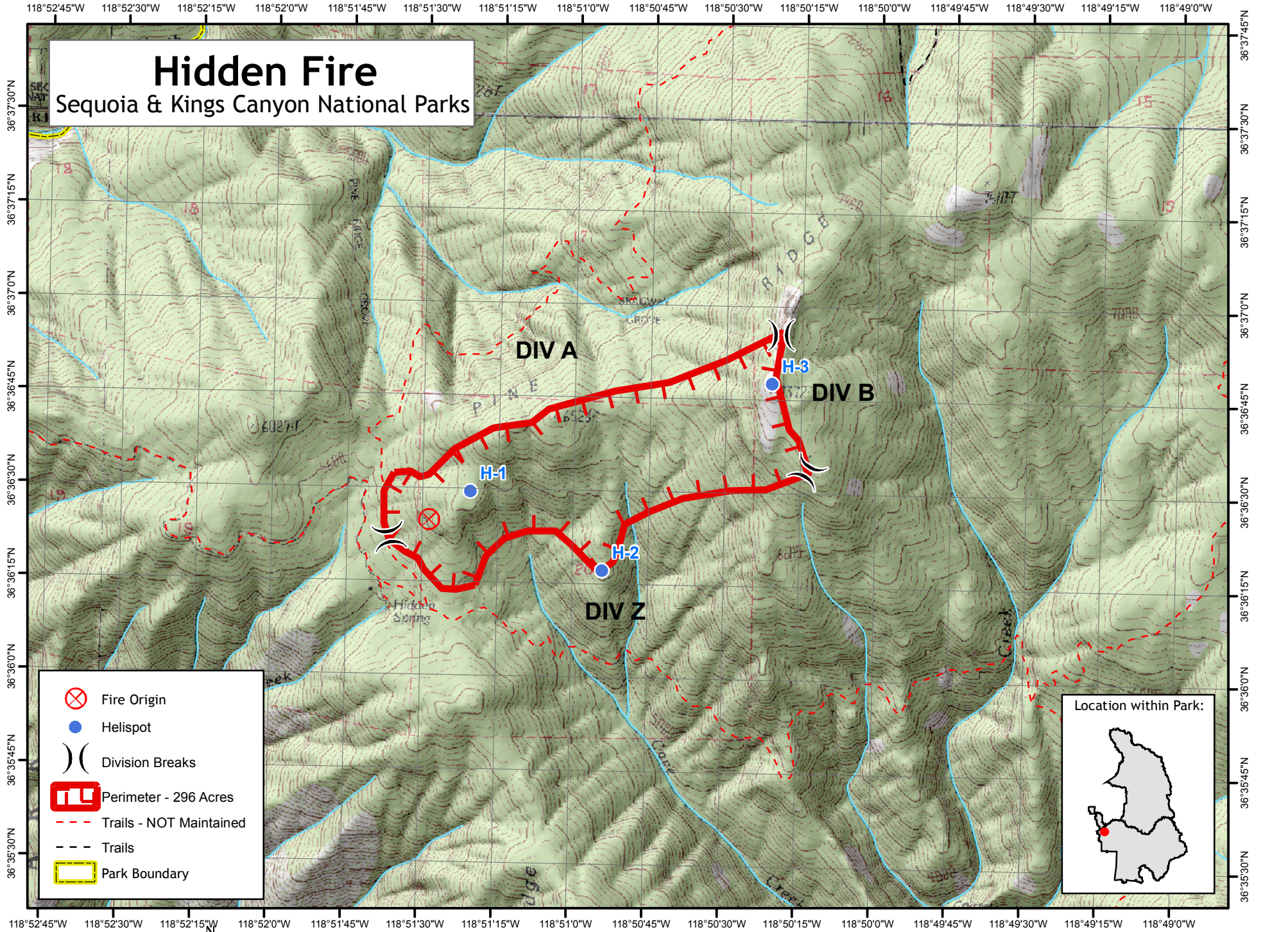
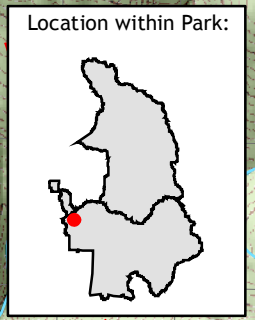


# Hidden Fire

Sequoia & Kings Canyon National Parks



- Fire Origin
- Helispot
- Division Breaks
- Perimeter - 296 Acres
- Trails - NOT Maintained
- Trails
- Park Boundary



1:24,000



Map by NPS(kf), 9/15/2008  
Perimeter as of 9/14/2008