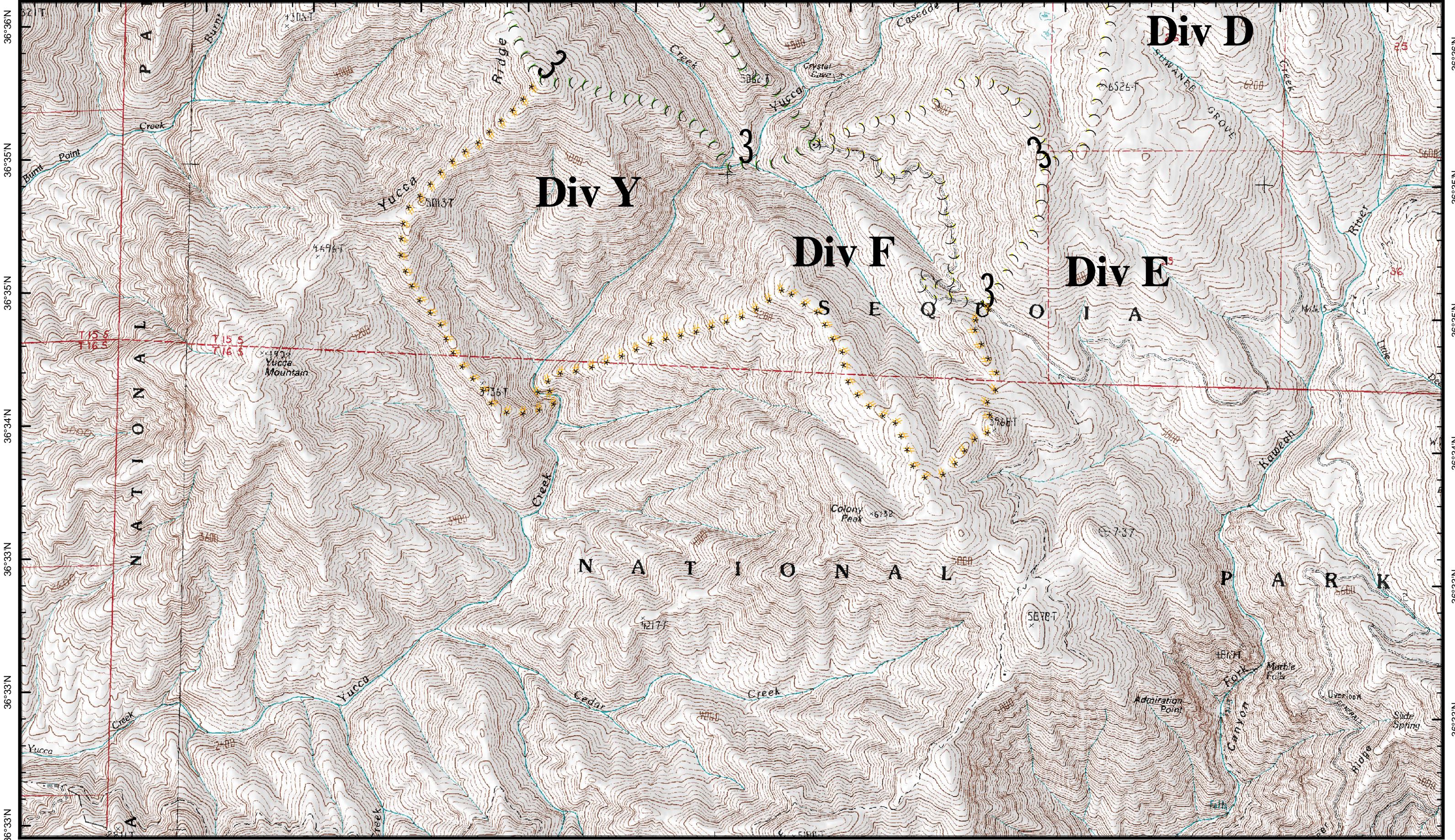


118°53'W 118°53'W 118°52'W 118°52'W 118°51'W 118°51'W 118°50'W 118°50'W 118°49'W 118°48'W 118°48'W 118°47'W 118°47'W










0 0.25 0.5 1 Miles



1:24,000

Page 2

Hidden Fire
Sequoia & Kings Canyon National Park
September 18, 2008

-  Uncontrolled Fire Edge
-  Helispot
-  Contingency
-  Division Break
-  Direct/Indirect
-  Indirect
-  Contingency

