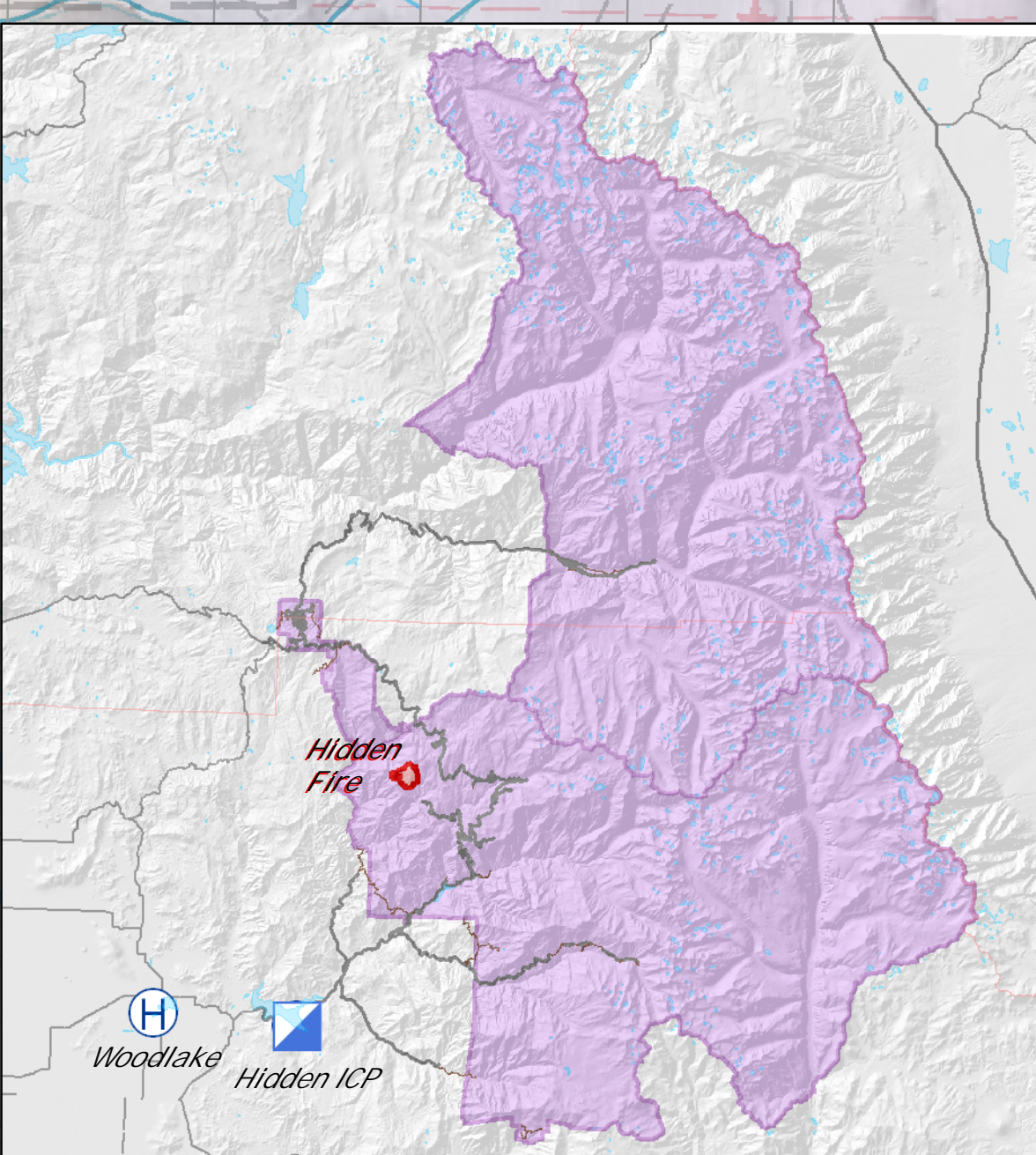


H-1 36 36.494 N, -118 51.34 W
H-2 36 36.29 N, -118 50.898 W
H-3 36 36.797 N, -118 50.344 W
DP-1 36 38.17 N, -118 48.688 W
DP-2 36 37.206 N, -118 48.552 W
DP-3 36 36.276 N, -118 48.279 W
Cave Spike 36 35.12N, -118 49.62W



Branch I

Branch II

Hidden Fire

Air Operations
Sequoia & Kings Canyon National Park
September 19, 2008

- 2 Branch Break
- â Helispot
- (((((Planned Direct/Indirect
-)))) Indirect
- 3 Division Break
- â Helispot
- Uncontrolled Fire Edge
- Retardant Avoidance Zone

