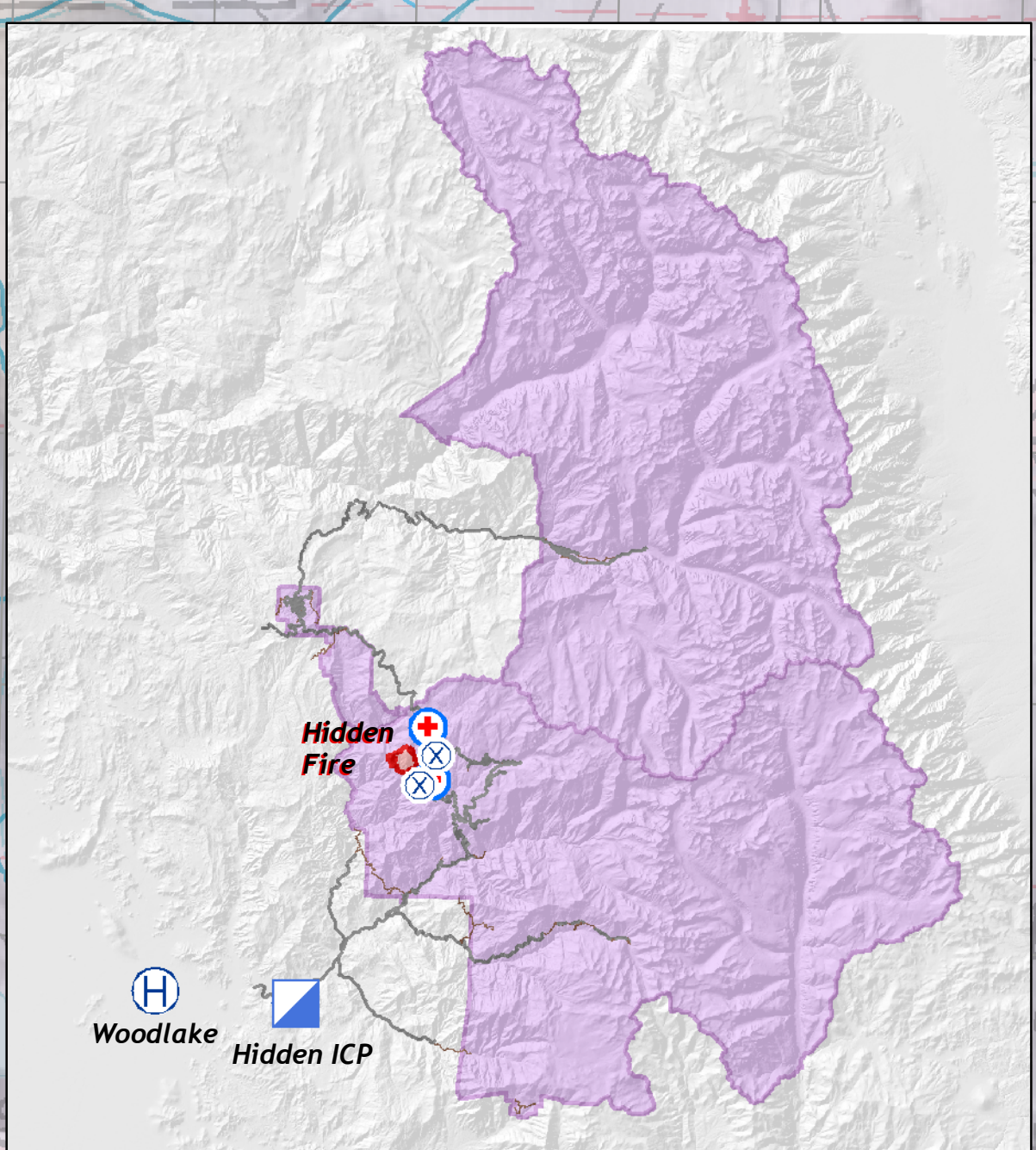




H-1 36 36.494 N, -118 51.34 W
H-2 36 36.29 N, -118 50.898 W
H-3 36 36.797 N, -118 50.344 W
DP-1 36 38.17 N, -118 48.688 W
DP-2 36 37.206 N, -118 48.552 W
DP-3 36 36.276 N, -118 48.279 W
Cave Spike 36 35.12N, -118 49.62W



Medivac Only
DP-1 36 38.129 N, -118 49.078 W
T-2 36 35.321 N, -118 48.751 W

Hidden Fire

Air Operations
Sequoia & Kings Canyon National Park
September 20, 2008



Uncontrolled Fire Edge

Planned Direct/Indirect

Indirect

Division Break

Branch Break

Retardant Avoidance Zone

Helispot

Helispot

Medivac Only Site

Camp

Mobile Weather Units

