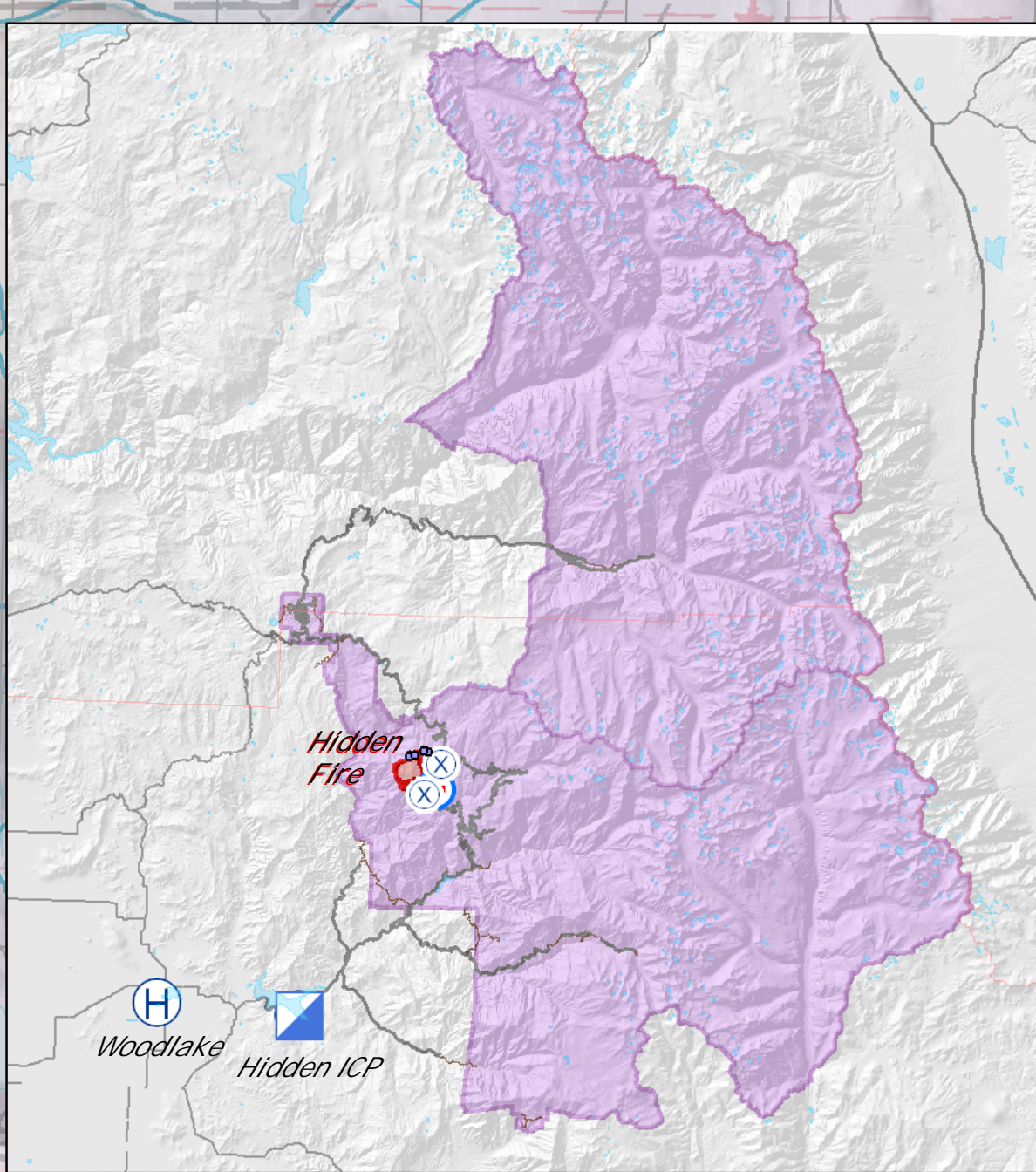


H-1 36 36.494 N, -118 51.34 W
H-2 36 36.29 N, -118 50.898 W
H-3 36 36.797 N, -118 50.344 W
H-4 36 55.365N, -118 50.938 W
H-5 36 38.129 N, -118 49.078 W
DP-1 36 38.17 N, -118 48.688 W
DP-2 36 37.206 N, -118 48.552 W
DP-3 36 36.276 N, -118 48.279 W
Cave Spike 36 35.12N, -118 49.62 W
SS-1 36 37.035 N, -118 50.442 W
SS-2 36 36.988 N, -118 50.502 W
SS-3 36 37.245 N, -118 49.307 W
SS-4 36 37.317 N, -118 49.608 W
SS-5 36 37.048 N, -118 50.203 W



Branch I

Branch II

Medivac Only
T-2 36 35.321 N, -118 48.751 W

Hidden Fire

Air Operations
Sequoia & Kings Canyon National Park
September 24, 2008

Uncontrolled Fire Edge
Contingency

3 Division Break
2 Branch Break
Retardant Avoidance Zone

Drop Point
Helispot
Medivac Only Site
Camp
Mobile Weather Units
Sling Site

