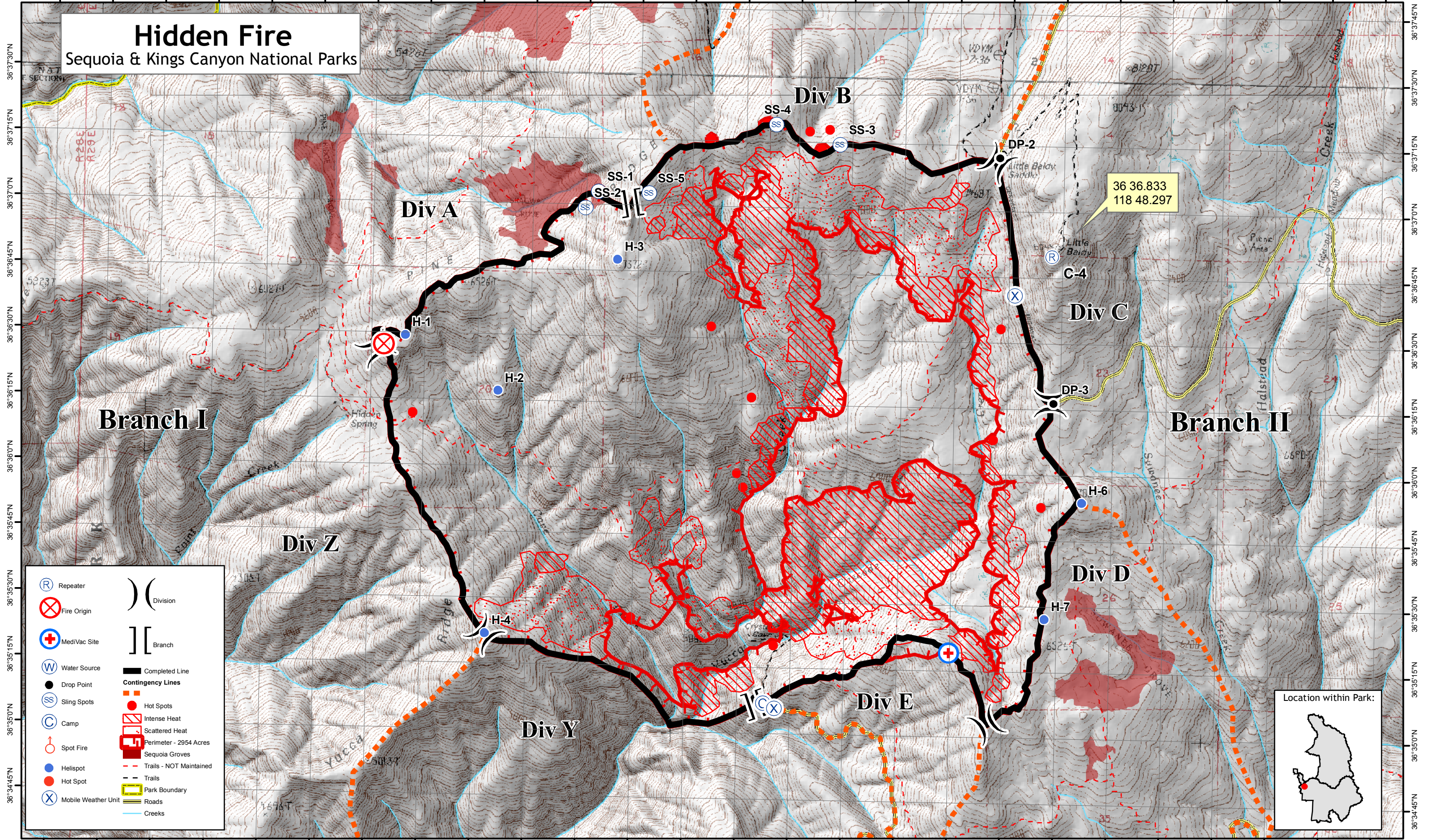


118°53'0"W 118°52'45"W 118°52'30"W 118°52'15"W 118°52'0"W 118°51'45"W 118°51'30"W 118°51'15"W 118°51'0"W 118°50'45"W 118°50'30"W 118°50'15"W 118°50'0"W 118°49'45"W 118°49'30"W 118°49'15"W 118°49'0"W 118°48'45"W 118°48'30"W 118°48'15"W 118°48'0"W 118°47'45"W 118°47'30"W 118°47'15"W 118°47'0"W 118°46'45"W

# Hidden Fire

Sequoia & Kings Canyon National Parks



36 36.833  
118 48.297

- (R) Repeater
- (X) Fire Origin
- (+) MediVac Site
- (W) Water Source
- (●) Drop Point
- (SS) Sling Spots
- (C) Camp
- (H) Helispot
- (●) Hot Spot
- (X) Mobile Weather Unit
- ) ( Division
- ] [ Branch
- Completed Line
- Contingency Lines
  - Hot Spots
  - Intense Heat
  - Scattered Heat
  - Perimeter - 2954 Acres
  - Sequoia Groves
  - Trails - NOT Maintained
  - Trails
  - Park Boundary
  - Roads
  - Creeks

1:24,000  
W N E S  
0.5 0.25 0 0.5 1 Miles

Map by NPS(ab), 9/25/2008  
Perimeter as of 9/24/2008 IR @ 2055