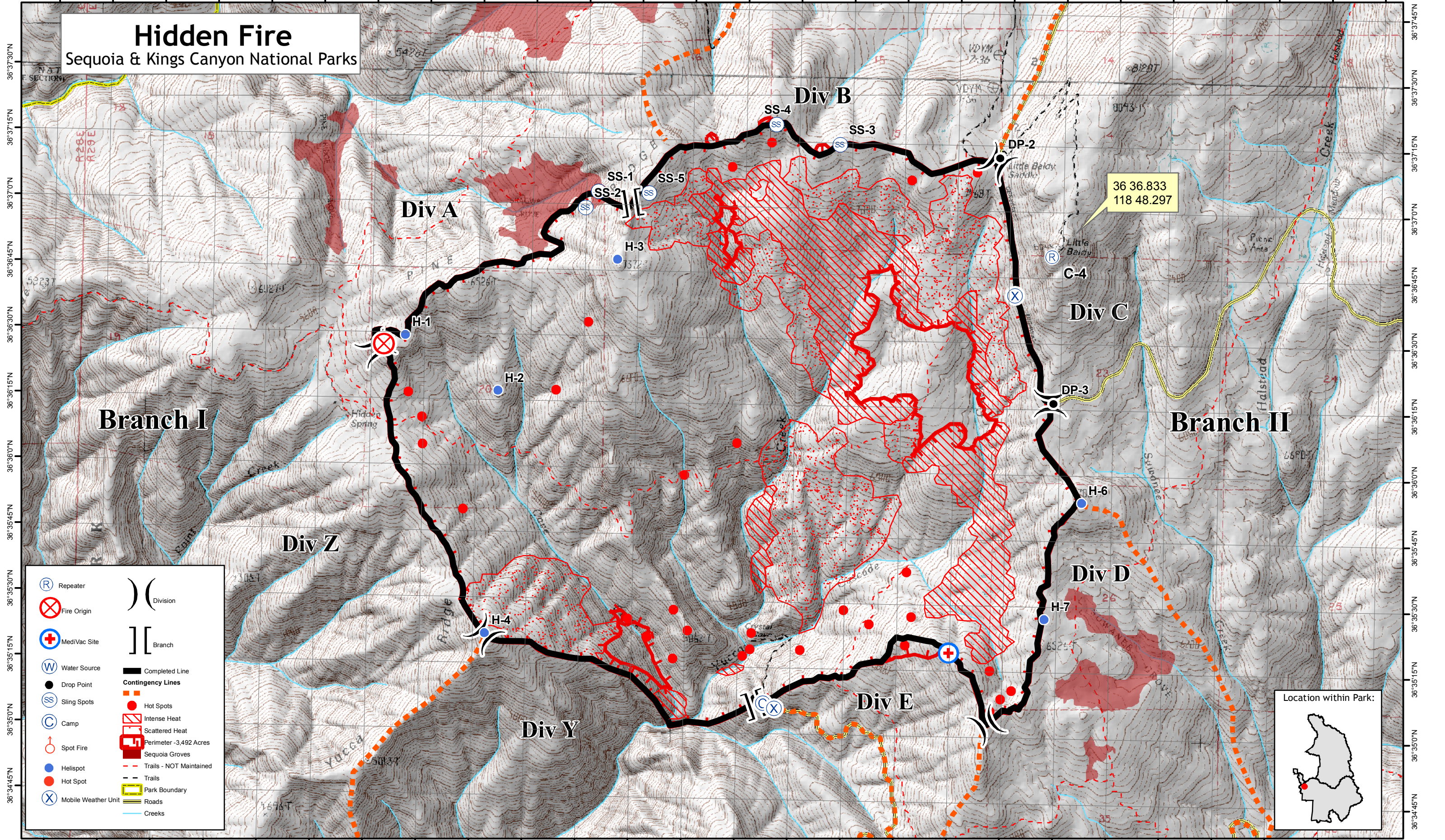


118°53'0"W 118°52'45"W 118°52'30"W 118°52'15"W 118°52'0"W 118°51'45"W 118°51'30"W 118°51'15"W 118°51'0"W 118°50'45"W 118°50'30"W 118°50'15"W 118°50'0"W 118°49'45"W 118°49'30"W 118°49'15"W 118°49'0"W 118°48'45"W 118°48'30"W 118°48'15"W 118°48'0"W 118°47'45"W 118°47'30"W 118°47'15"W 118°47'0"W 118°46'45"W

Hidden Fire

Sequoia & Kings Canyon National Parks



(R)	Repeater) (Division
(X)	Fire Origin] [Branch
(+)	MediVac Site	—	Completed Line
(W)	Water Source	—	Contingency Lines
(●)	Drop Point	—	Hot Spots
(SS)	Sling Spots	—	Intense Heat
(C)	Camp	—	Scattered Heat
(○)	Spot Fire	—	Perimeter - 3,492 Acres
(●)	Helispot	—	Sequoia Groves
(●)	Hot Spot	—	Trails - NOT Maintained
(X)	Mobile Weather Unit	—	Trails
		—	Park Boundary
		—	Roads
		—	Creeks

1:24,000 0.5 0.25 0 0.5 1 Miles

Map by NPS(ab), 9/26/2008
Perimeter as of 9/25/2008 IR @ 2350