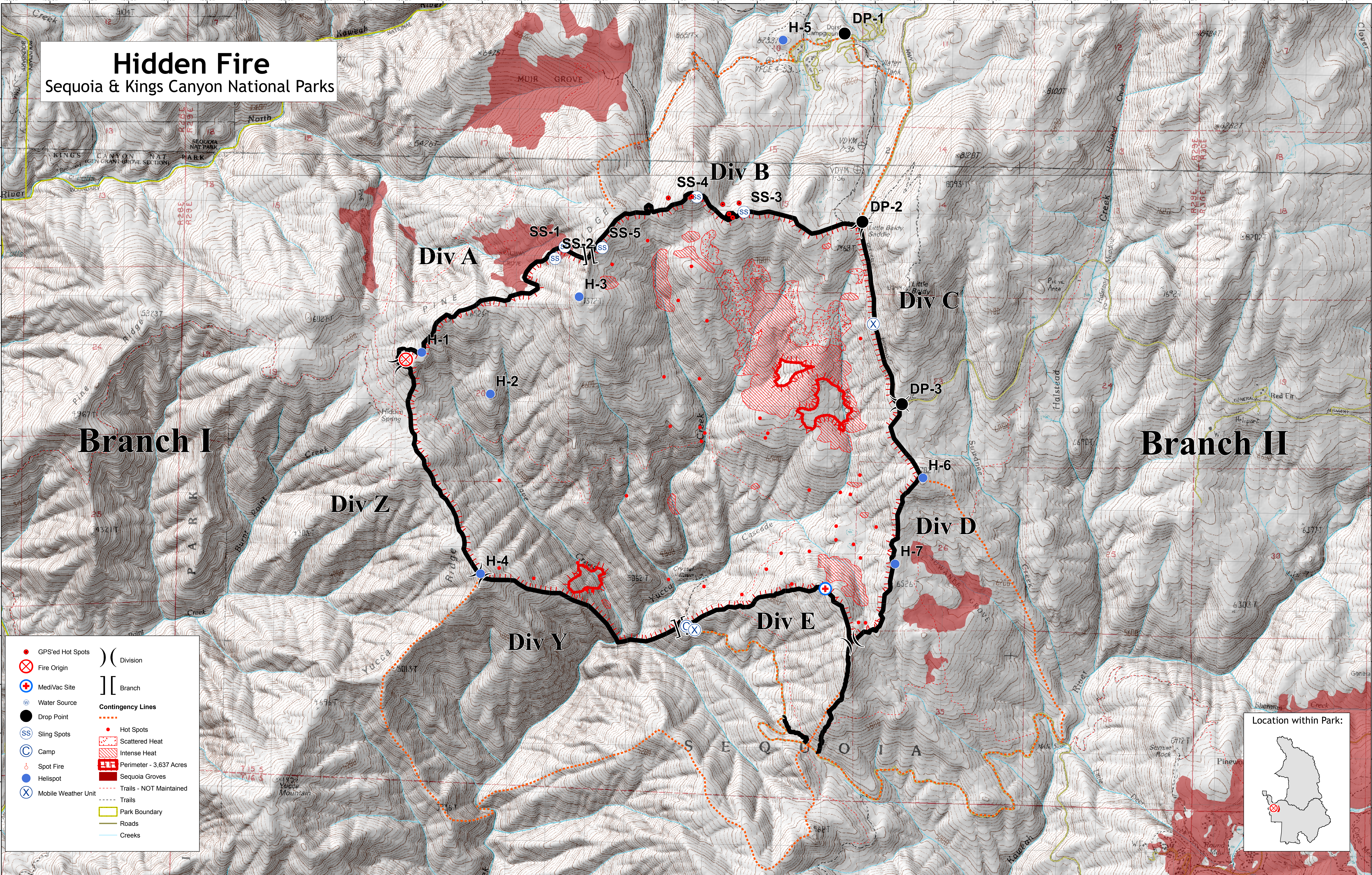


Hidden Fire

Sequoia & Kings Canyon National Parks



- | | | | |
|----|-------------------------|--------------------------|----------|
| ● | GPS'ed Hot Spots |) (| Division |
| ⊗ | Fire Origin |] [| Branch |
| ⊕ | MediVac Site | | |
| ⊖ | Water Source | | |
| ● | Drop Point | | |
| SS | Sling Spots | | |
| C | Camp | | |
| ⊙ | Spot Fire | | |
| ⊕ | Helispot | | |
| ⊗ | Mobile Weather Unit | | |
| | | Contingency Lines | |
| ● | Hot Spots | | |
| ⊗ | Scattered Heat | | |
| ⊗ | Intense Heat | | |
| ⊗ | Perimeter - 3,637 Acres | | |
| ⊗ | Sequoia Groves | | |
| ⊗ | Trails - NOT Maintained | | |
| ⊗ | Trails | | |
| ⊗ | Park Boundary | | |
| ⊗ | Roads | | |
| ⊗ | Creeks | | |

1:12,000 N
W E
S
0.5 0.25 0 0.5 1 1.5
Miles

Map by NPS(ab), 9/28/2008
Perimeter as of 9/27/2008 IR @ 2155