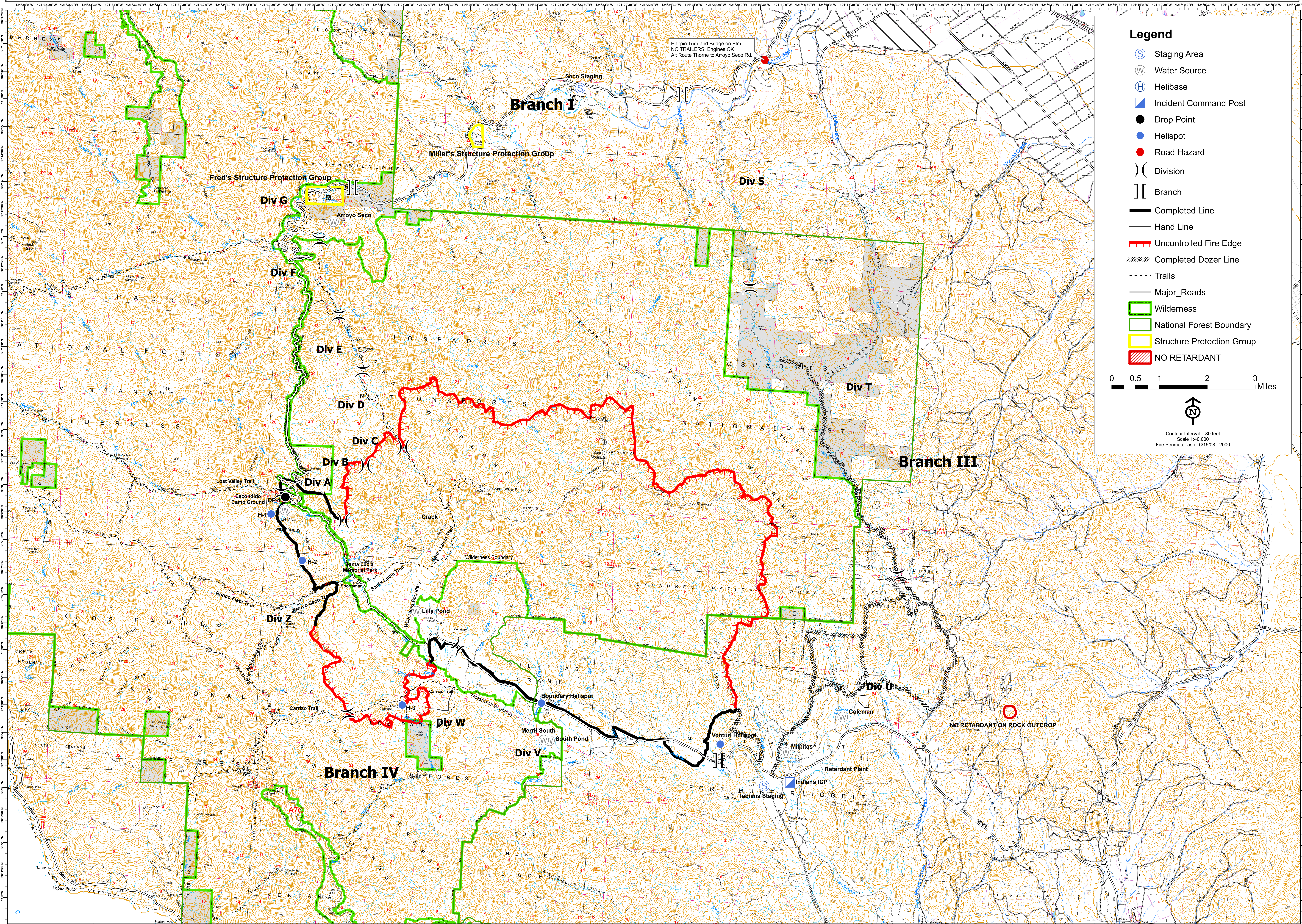




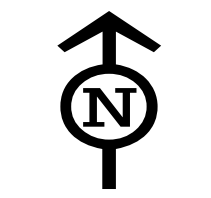
Indians Incident Operations Map

CA-LPF-001491
June 16, 2008, 0600
33,305 Acres



Legend

- Staging Area
- Water Source
- Helibase
- Incident Command Post
- Drop Point
- Helispot
- Road Hazard
- Division
- Branch
- Completed Line
- Hand Line
- Uncontrolled Fire Edge
- Completed Dozer Line
- Trails
- Major_Roads
- Wilderness
- National Forest Boundary
- Structure Protection Group
- NO RETARDANT



Contour Interval = 80 feet
Scale 1:40,000
Fire Perimeter as of 6/15/08 - 2000

Harpin Turn and Bridge on Elm.
NO TRAILERS, Engines OK
All Route Thorne to Arroyo Seco Rd.

NO RETARDANT ON ROCK OUTCROP

Indians ICP

Indians Staging

Branch IV

Branch III

Branch I

Div G

Div S

Div F

Div E

Div T

Div D

Div C

Div B

Div A

Div Z

Div W

Div V

Div U

Fred's Structure Protection Group

Miller's Structure Protection Group

Escondido Camp Ground

Santa Lucia Memorial Park

Merrill South

Coleman

Milpitas

Rotarant Plant

South Pond

Ventura Helispot

Arroyo Seco Trail

Santa Lucia Trail

Carrizo Trail

Rodeo Flats Trail

Lost Valley Trail

Crack

Wilderness Boundary

Santa Lucia Trail

Wilderness Boundary

Arroyo Seco Trail

Santa Lucia Trail

Wilderness Boundary

Santa Lucia Trail

Wilderness Boundary

Carrizo Trail

Wilderness Boundary

Santa Lucia Trail

Wilderness Boundary

Santa Lucia Trail

Wilderness Boundary

Santa Lucia Trail

Wilderness Boundary

Santa Lucia Trail

Wilderness Boundary

Santa Lucia Trail

Wilderness Boundary

Arroyo Seco Trail

Santa Lucia Trail

Wilderness Boundary

Santa Lucia Trail

Wilderness Boundary

Carrizo Trail

Wilderness Boundary

Santa Lucia Trail

Wilderness Boundary

Santa Lucia Trail

Wilderness Boundary

Santa Lucia Trail

Wilderness Boundary

Santa Lucia Trail

Wilderness Boundary

Santa Lucia Trail

Wilderness Boundary

Vertical coordinate labels on the left edge of the map.

Vertical coordinate labels on the right edge of the map.

Horizontal coordinate labels at the bottom left of the map.

Horizontal coordinate labels at the bottom right of the map.