

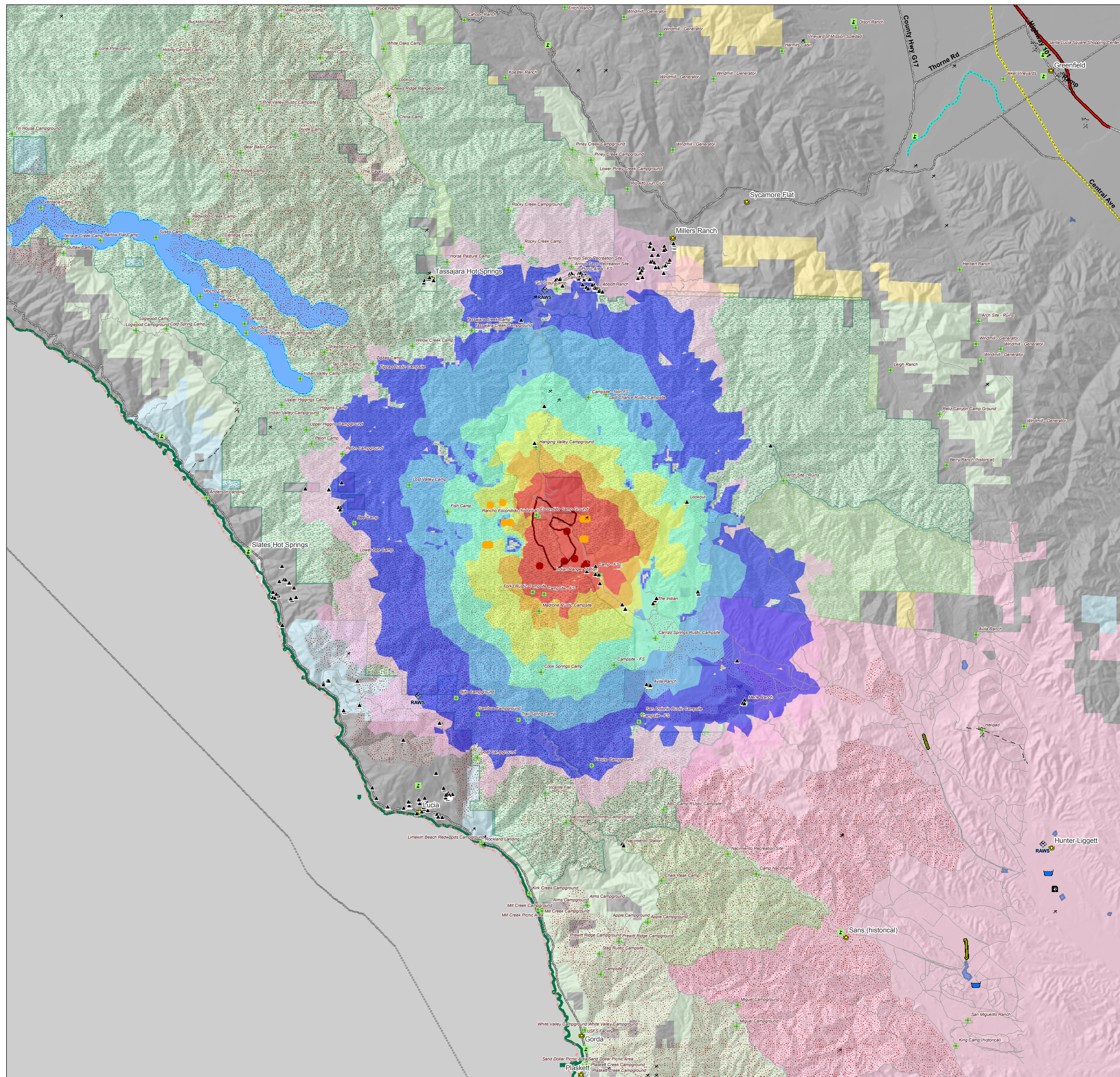


Indians LPF, CA

T1_A_080609_eb1

Major Values-at-Risk per FSPRO Fire Spread Probabilities: 7 days as of 9 June 2008

- Current Fire Perimeter 9 June am
- MODIS Points 7 days prior 9 June am**
- June 9
- June 8
- 6 days prior
- Past Fires 1994-2006
- FSPRO Fire Spread 7 days from 9 June am**
- > 80 %
- 60 - 80 %
- 40 - 60 %
- 20 - 40 %
- 5 - 20 %
- 1 - 5 %
- < 1 %
- ▲ Building Clusters
- ◆ RAWs Stations
- Water: Dams > 100af
- Water Pipeline - Aqueduct - Canal
- Powerlines
- ▲ Industrial Plant
- T Power Pylon
- ✕ Communication Towers
- Oil & Gas Transmission Lines
- ✕ Airports
- Airport Runways
- Schools
- ✕ HAZMAT: Mines
- Other Landmarks
- Interstates
- Major Roads
- Local Roads (USFS)
- Railways
- County Boundary
- Jurisdiction**
- Private
- County
- State
- BLM
- DOD
- USFS
- Inventoried Roadless
- Designated Wilderness
- Experimental RNA
- Primitive RNA
- Wild-Scenic-Rec Rivers



CAUTION: Defer to air photos or local knowledge for exact structure and other feature locations.

** Structure points are derived by the USGS through supervised analysis of high resolution aerial photography. Structures within dense canopy may not be mapped.

Recreation residences and special use area data are not supplied by USFS, and therefore are not identified or analyzed in this report.