



Telegraph, CA

28 July 2008 - RIVaT_080728_jk_1

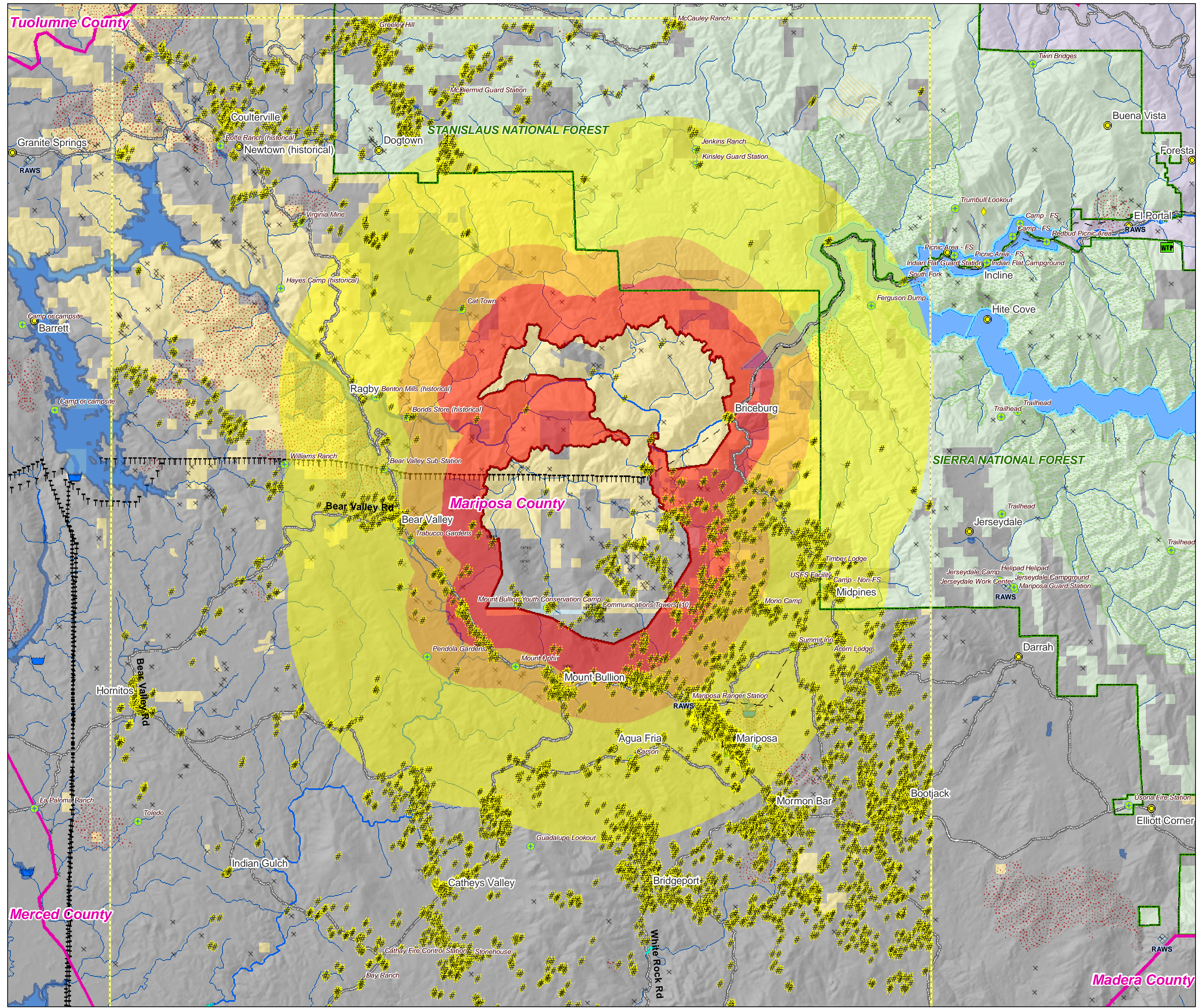
Limited Hazard Assessment

Based on Fire Perimeter as of 27 July 2008

No probability of fire spread intended or implied.

This analysis is NOT a full risk analysis and does not replace RAVAR.
Beta version - Analysis method subject to change and revision

- Fire Data**
- IR/MODIS Perimeter: 27 July AM
- Buffer Zone**
- 1-mile buffer
- 2-mile buffer
- 5-mile buffer
- Past Fires 1994-2007
- Assets**
- Structure Points: USGS
- USGS Structure Extraction Extent
- RAWS Stations
- Water: Dams > 100af
- Water Supply: Intakes
- Water Treatment Plants
- Water Pipeline - Aqueduct - Canal
- Powerlines
- Industrial Plant
- Power Pylon
- Communication Towers
- Airports
- Airport Runways
- HAZMAT: Mines
- HAZMAT: Hazardous Waste
- Other Landmarks
- Major Roads
- Jurisdiction**
- Private
- State
- BLM
- NPS
- USFS
- Inventoried Roadless
- Designated Wilderness
- Experimental RNA
- Wild-Scenic-Rec Rivers
- County Boundary
- National Forest Boundaries



Buffer Zone	Acres by Zone	Cumulative Acres	Count by Zone	Cumulative Count
In Perimeter	20,156	20,156	144	144
1-mile	33,313	53,468	401	545
2-miles	11,522	64,990	122	667
5-miles	89,504	154,494	1,507	2,174

* Structure points are derived by the USGS through supervised analysis of high resolution aerial photography. Structures within dense canopy may not be mapped.
CAUTION: Defer to air photos or local knowledge for exact structure and other feature locations.