

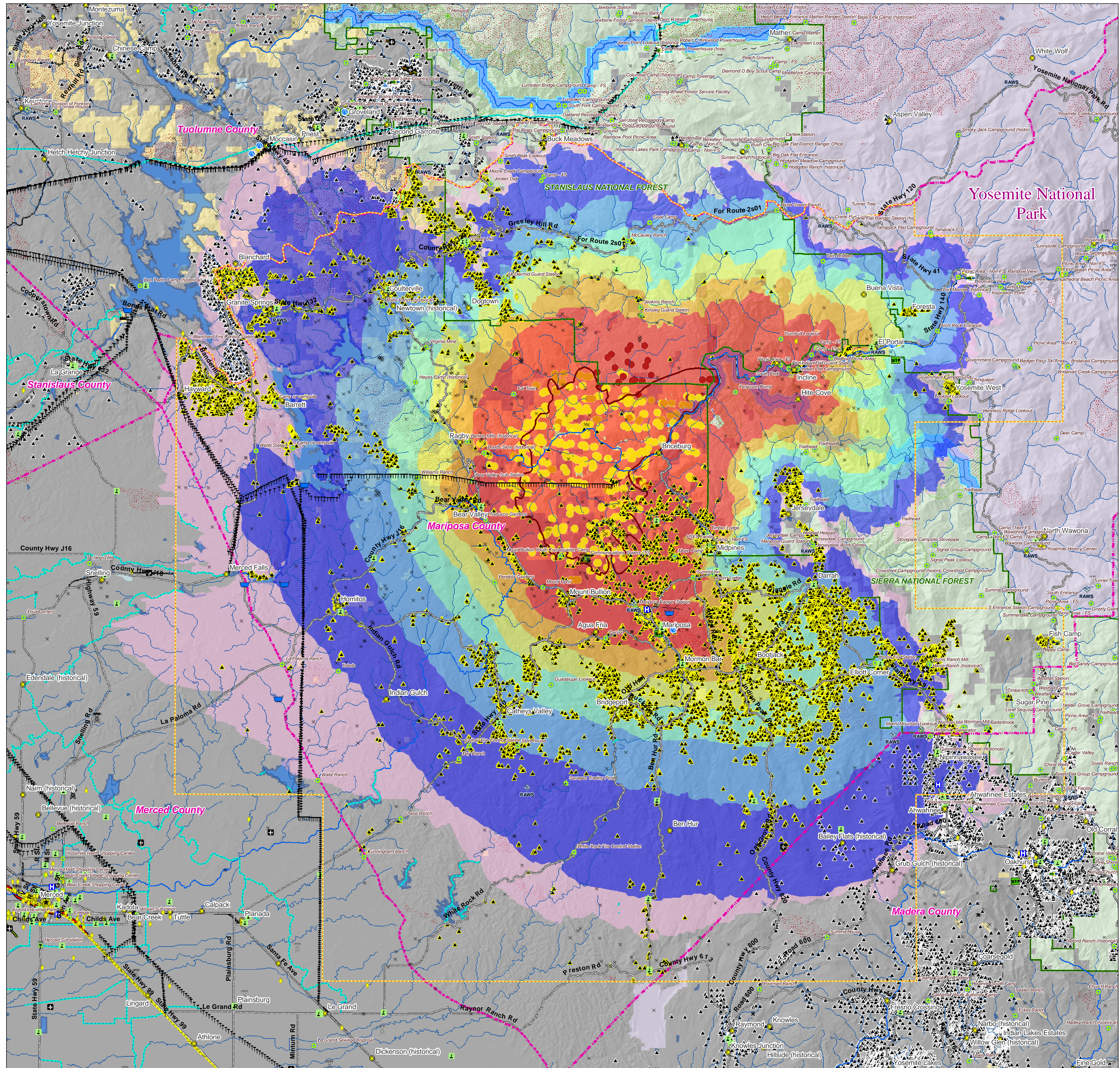


Telegraph Fire, CA

29 July 2008 T1_A_080729_jr

Major Values-at-Risk per FSPRO Fire Spread Probabilities: 7 days as of 29 July 2008

- FSPRO Fire Perimeter
- MODIS Points 7 days: 29 July**
- ! 29 July
- ! 28 July
- ! Prior 6 Days
- ! Past Fires 1994-2007
- FSPRO Fire Spread Probabilities**
- > 80 %
- 60 - 80 %
- 40 - 60 %
- 20 - 40 %
- 5 - 20 %
- 1 - 5 %
- < 1 %
- # Building Clusters
- # USGS Structures
- Z RAWs Stations
- W Water: Dams > 100af
- W Water Supply: Intakes
- Q Water Treatment Plants
- Water Pipeline - Aqueduct - Canal
- Powerlines
- D Industrial Plant
- Power Pylon
- + Power or Pumping Substation
- X Communication Towers
- Oil & Gas Transmission Lines
- ✈ Airports
- Airport Runways
- Ski Resort Cables
- v Hospitals
- h Schools
- C HAZMAT: Mines
- W HAZMAT: Superfund Sites
- W HAZMAT: Hazardous Waste
- Other Landmarks
- Interstates
- Major Roads
- Railways
- County Boundary
- National Forest Boundaries
- Jurisdiction**
- Private
- State
- BLM
- NPS
- USFS
- Inventoried Roadless
- Designated Wilderness
- Experimental RNA
- Primitive RNA
- Wild-Scenic-Rec Rivers
- USGS Structure Extraction Extent



***Building Clusters** represent the center of parcels where county assessor records indicate taxable improvements are present. One or more structures and other improvements may exist proximate to these point locations.

**** Structure points** are derived by the USGS through supervised analysis of high resolution aerial photography. Structures within dense canopy may not be mapped.

*****Recreation residences and special use structures** data are not available from USFS and are not identified or analyzed in this report.

******Mines** may pose a threat to fire fighter safety.

CAUTION: Defer to air photos or local knowledge for exact structure and other feature locations.

1:100,000 0 5 10 20 Miles