

118°20'W

118°19'W

118°18'W

118°17'W

34°21'N

34°20'N

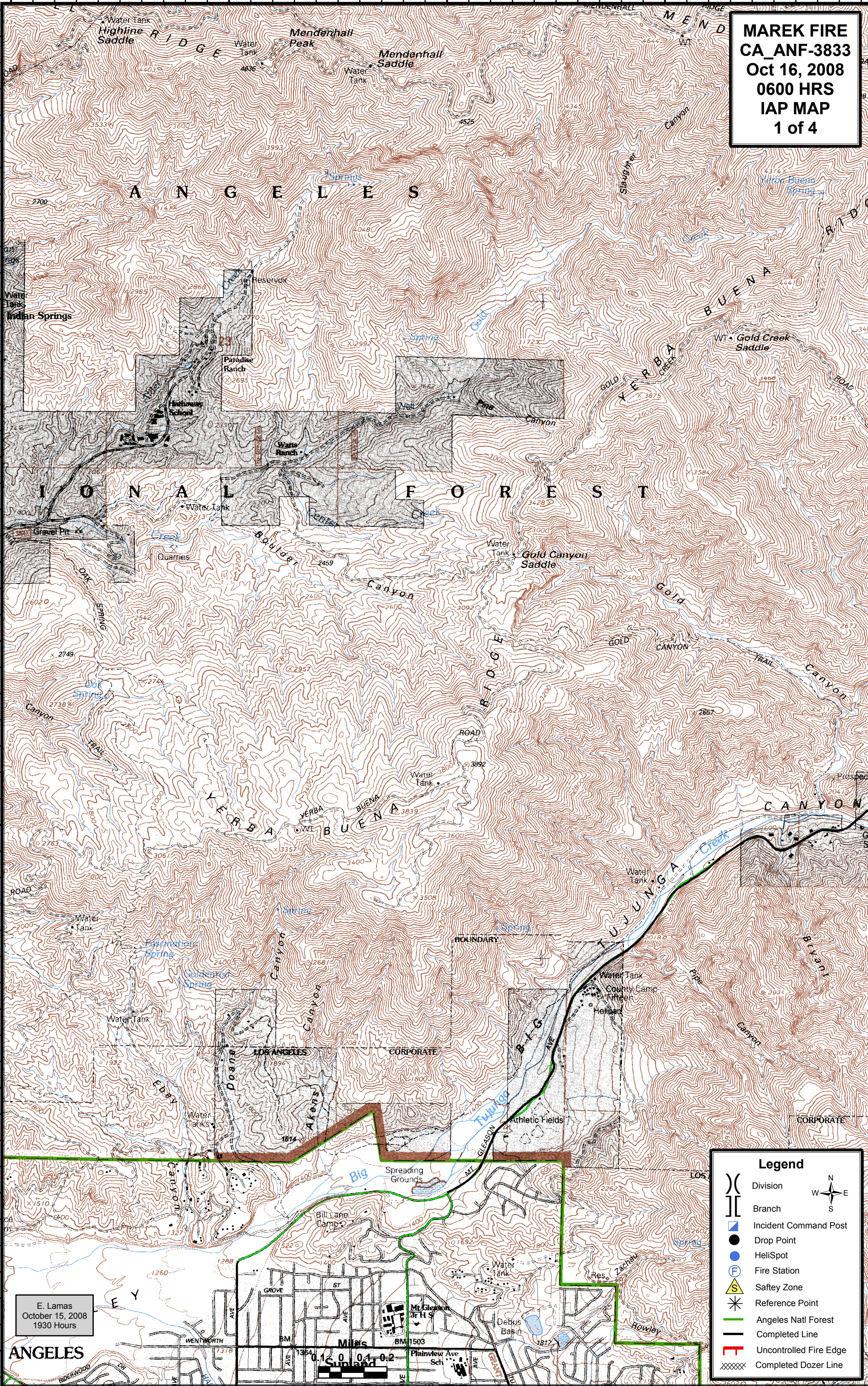
34°19'N

34°18'N

34°17'N

34°16'N

MAREK FIRE
CA_ANF-3833
Oct 16, 2008
0600 HRS
IAP MAP
1 of 4



E. Lamas
 October 15, 2008
 1930 Hours

Legend

()	Division	W	N	E
	Branch		S	
■	Incident Command Post			
●	Drop Point			
○	HeliSpot			
⊙	Fire Station			
⚠	Safety Zone			
*	Reference Point			
—	Angeles Natl Forest			
—	Completed Line			
—	Uncontrolled Fire Edge			
XXXX	Completed Dozer Line			