

118°23'W

118°22'W

118°21'W

118°20'W

34°21'N

34°20'N

34°19'N

34°18'N

34°17'N

34°16'N

Div Y

DP-3

Div Z

DP-2

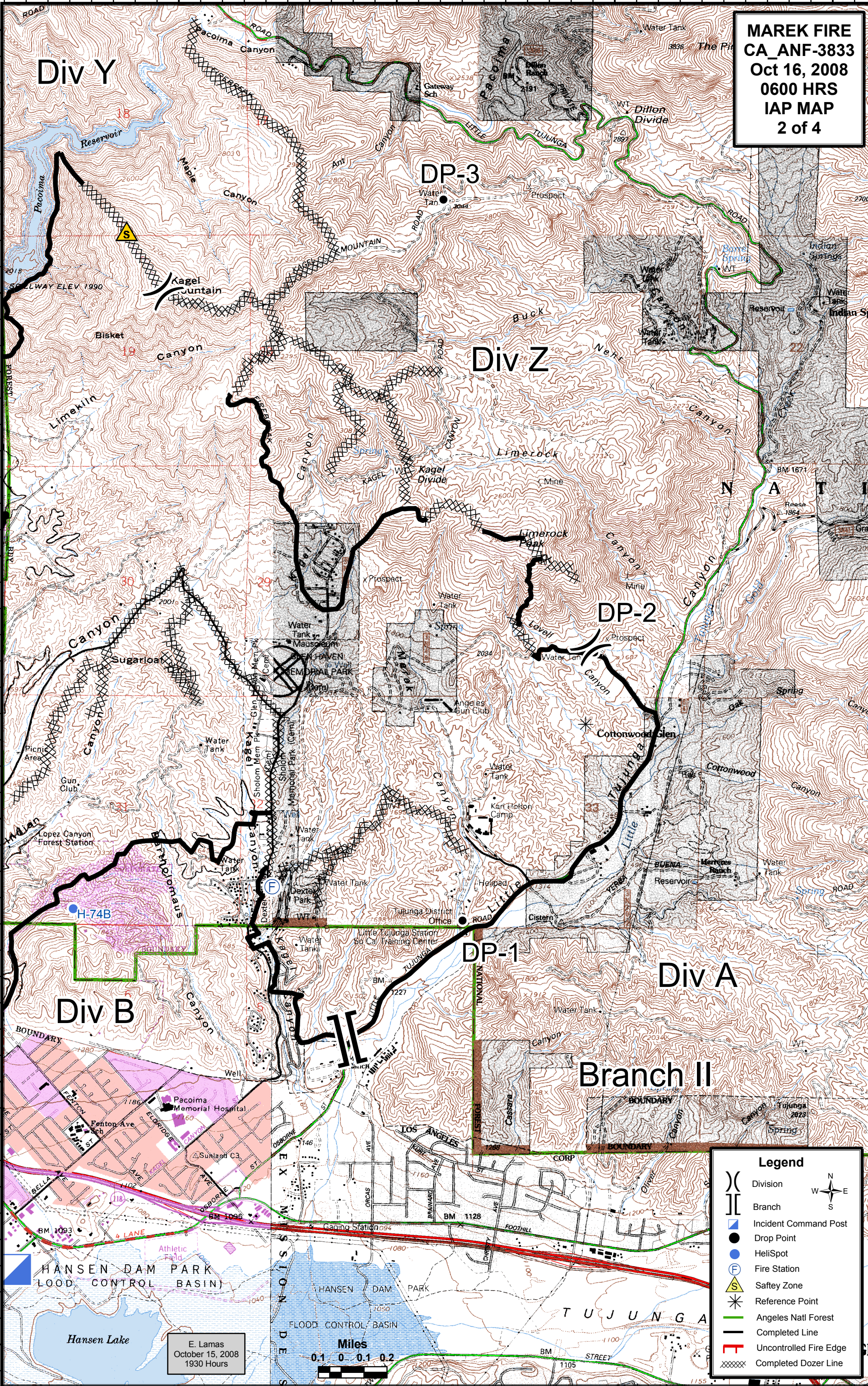
DP-1

Div A

Div B

Branch II

MAREK FIRE
CA_ANF-3833
Oct 16, 2008
0600 HRS
IAP MAP
2 of 4



Legend

- Division
- Branch
- Incident Command Post
- Drop Point
- HeliSpot
- Fire Station
- Safety Zone
- Reference Point
- Angeles Natl Forest
- Completed Line
- Uncontrolled Fire Edge
- Completed Dozer Line

N
 W E
 S

E. Lamas
 October 15, 2008
 1930 Hours

