

118°31'W

118°30'W

118°29'W

118°28'W

34°21'N

34°20'N

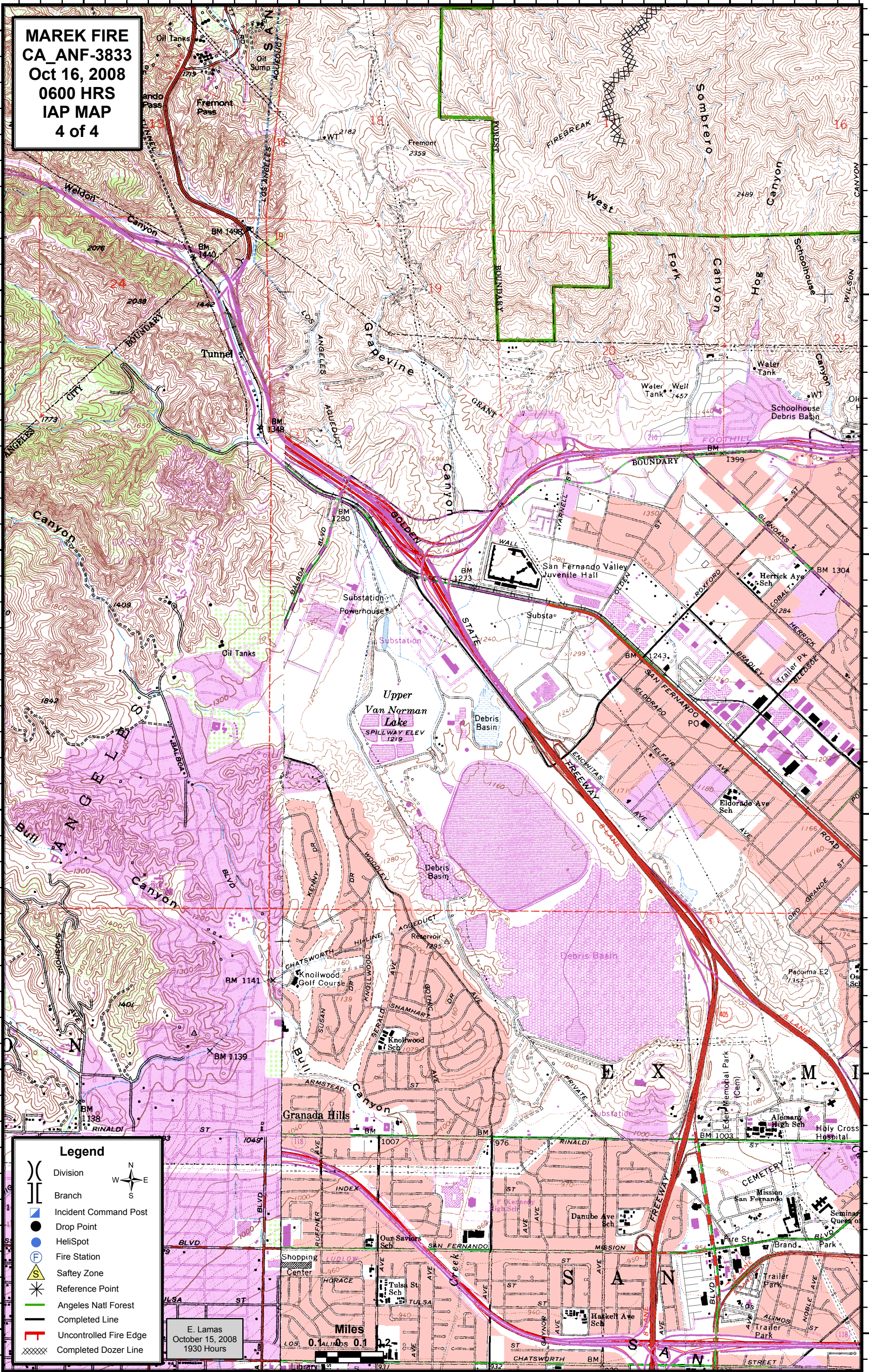
34°19'N

34°18'N

34°17'N

34°16'N

MAREK FIRE
CA_ANF-3833
Oct 16, 2008
0600 HRS
IAP MAP
4 of 4



Legend

- () Division
- [] Branch
- Incident Command Post
- Drop Point
- HeliSpot
- ⊕ Fire Station
- ⚠ Safety Zone
- * Reference Point
- Angeles Natl Forest
- Completed Line
- Uncontrolled Fire Edge
- ⊘ Completed Dozer Line

W N
S E

E. Lamas
 October 15, 2008
 1930 Hours

Miles
 0.1 Kilometers